



# SZABO SCANDIC

Part of Europa Biosite

## Produktinformation



Forschungsprodukte & Biochemikalien



Zellkultur & Verbrauchsmaterial



Diagnostik & molekulare Diagnostik



Laborgeräte & Service

Weitere Information auf den folgenden Seiten!  
See the following pages for more information!



### Lieferung & Zahlungsart

siehe unsere [Liefer- und Versandbedingungen](#)

### Zuschläge

- Mindermengenzuschlag
- Trockeneiszuschlag
- Gefahrgutzuschlag
- Expressversand

### SZABO-SCANDIC HandelsgmbH

Quellenstraße 110, A-1100 Wien

T. +43(0)1 489 3961-0

F. +43(0)1 489 3961-7

[mail@szabo-scandic.com](mailto:mail@szabo-scandic.com)

[www.szabo-scandic.com](http://www.szabo-scandic.com)

[linkedin.com/company/szaboscandic](https://www.linkedin.com/company/szaboscandic) 

## Data Sheet

### PFKFB3, His-tag

Human, recombinant, N-terminal His-tag  
**Catalog #:** 71089  
**Lot #:** 140214-1      **Conc.:** 0.61 mg/ml

**Formulated in:** 40 mM Tris pH 8, 110 mM NaCl, 2.2mM KCl, 0.04% Tween-20, 200 mM imidazole, and 20% glycerol

**Stability:** At least 6 months at  $-80^{\circ}\text{C}$ . Avoid freeze/thaw cycles. Storing diluted enzyme is not recommended, if necessary, use carrier protein (BSA 0.1 – 0.5%).

**References:**

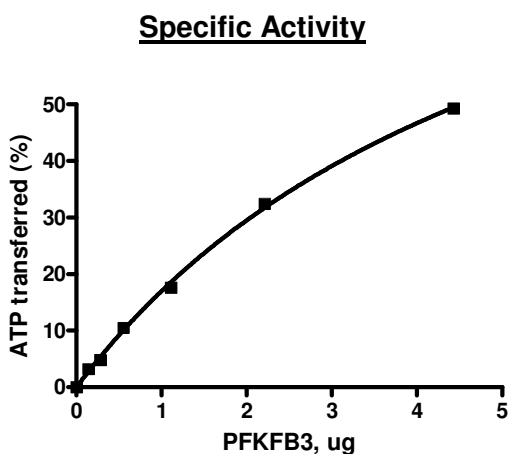
1. Cavalier, M.C., *et al.*, *Proteins* 2012;**80(4)**:1143-1153.
2. Reddy, M.M., *et al.*, *Leukemia* 2012;**26(3)**:481-489.

**Description:** Human 6-phosphofructo-2-kinase/ fructose-2,6-biphosphatase 3, also known as PFKFB3 and IPFK2, (GenBank Accession No. NM\_004566), a.a. 2-520(end)) with N-terminal His-tag, MW = 60.4 kDa, expressed in an *E. coli* cell expression system.

**Specific Activity:**  $\geq 28$  pmole/min/ $\mu\text{g}$ .  
 Assay Conditions: The reaction was done in 50 mM Tris-HCl, pH 7.5, 12.5 mM MgCl<sub>2</sub>, 1 mM  $\beta$ -D-fructose-6-phosphate, 100  $\mu\text{M}$  ATP, 2 mM DTT, 5 mM KH<sub>2</sub>PO<sub>4</sub>, and various amount of PFKFB3 in a final volume of 50  $\mu\text{L}$ . The reaction was incubated at 30 $^{\circ}\text{C}$  for 30 min, and the amount of ATP consumed was calculated using Kinase-Glo<sup>®</sup> Plus reagent (Promega).

**Application:** Useful for the study of enzyme kinetics, screening inhibitors, and selectivity profiling.

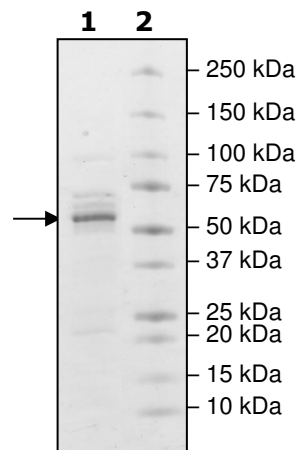
## Quality Assurance



**4-20% SDS-PAGE**  
**Coomassie staining**

**Lane 1:**  
1.75  $\mu\text{g}$  PFKFB3  
**Lane 2:**  
Protein Marker

**MW:** 60.4 kDa  
**Purity:**  $\geq 70\%$



OUR PRODUCTS ARE FOR RESEARCH USE ONLY. NOT FOR DIAGNOSTIC OR THERAPEUTIC USE.

To place your order, please contact us by Phone **1.858.829.3082** Fax **1.858.481.8694**  
 Or you can Email us at: [info@bpsbioscience.com](mailto:info@bpsbioscience.com)  
 Please visit our website at: [www.bpsbioscience.com](http://www.bpsbioscience.com)



6044 Cornerstone Court West, Suite E  
San Diego, CA 92121  
Tel: 1.858.829.3082  
Fax: 1.858.481.8694  
Email: [info@bpsbioscience.com](mailto:info@bpsbioscience.com)

**Sequence:**

MHHHHHPLELTQSRVQKIWVPVDHRPSLPRSCGPKLTNSPTVIVMVGLPARGKTYISK  
KLTRYLNWIGVPTKVFNVGEYRREAVKQYSSYNFFRPDNEEAMKVRKQCALAALRDVK  
SYLAKEGGQIAVFDATNTTRERRHMILHFAKENDFKAFFIESVCDDPTVVASNIMEVKISS  
PDYKDCNSAEAMDDFMKRISCYEASYQPLDPDKCDRDLSELIKVIDVGRFLVNRVQDHI  
QSRIVYYLMNIHVQPRTIYLCRHGENEHLQGRIGGDSGLSSRGKKFASALSKFVEEQN  
LKDLRVWTSQLKSTIQTAEALRLPYEQWKALNEIDAGVCEELTYEEIRDTYPEEYALRE  
QDKYYYRYPTGESYQDLVQRLEPVMELERQENVLVICHQAVLRCLLAYFLDKSAEEMP  
YLCPLHTVLKLTVPVAYGCRVESIYLNVESVCTHRERSEDAKKGNPLMRRNSVTPLAS  
PEPTKKPRINSFEEHVASTSAALPSCLPPEVPTQLPGQNMKGSRSSADSSRKH

OUR PRODUCTS ARE FOR RESEARCH USE ONLY. NOT FOR DIAGNOSTIC OR THERAPEUTIC USE.

To place your order, please contact us by Phone **1.858.829.3082** Fax **1.858.481.8694**  
Or you can Email us at: [info@bpsbioscience.com](mailto:info@bpsbioscience.com)  
Please visit our website at: [www.bpsbioscience.com](http://www.bpsbioscience.com)