



SZABO SCANDIC

Part of Europa Biosite

Produktinformation



Forschungsprodukte & Biochemikalien



Zellkultur & Verbrauchsmaterial



Diagnostik & molekulare Diagnostik



Laborgeräte & Service

Weitere Information auf den folgenden Seiten!
See the following pages for more information!



Lieferung & Zahlungsart

siehe unsere [Liefer- und Versandbedingungen](#)

Zuschläge

- Mindermengenzuschlag
- Trockeneiszuschlag
- Gefahrgutzuschlag
- Expressversand

SZABO-SCANDIC HandelsgmbH

Quellenstraße 110, A-1100 Wien

T. +43(0)1 489 3961-0

F. +43(0)1 489 3961-7

mail@szabo-scandic.com

www.szabo-scandic.com

[linkedin.com/company/szaboscandic](https://www.linkedin.com/company/szaboscandic) 

Data Sheet

GPD1

Human, recombinant, N-terminal His-tag

Catalog #: 71092

Lot#: 130509 **Conc.:** 2.20 mg/ml

Formulated in: 40 mM Tris-HCl, pH 8.0,
110 mM NaCl, 2.2 mM KCl, 106 mM
imidazole, 0.04% Tween-20, 20% glycerol.

Stability: >6 months at -80°C

References:

1. Alarcon, D.A., *et al.*, *Struct. Biol. Cryst. Commun.* **68(11)**:1279-83 (2012).

2. Ding, W.T., *et al.*, *Microbiol.* **79(10)**:3273-81 (2013).

Description:

Human GPD1 (glycerol-3-phosphate dehydrogenase 1), also known as GPDH1, GenBank Accession No. NM_005276, a.a. 2-349(end), with N-terminal His-tag, MW= 38.4 kDa, expressed in an *E. coli* expression system.

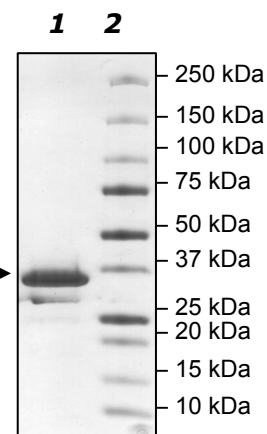
Application:

Useful for the study of enzyme kinetics, screening inhibitors, and selectivity profiling.

Quality Assurance

**4-20% SDS-PAGE
Coomassie staining**

Lane 1:
3 µg GPD1
Lane 2:
Protein Marker
MW: 38.4 kDa →
Purity: ≥80%



OUR PRODUCTS ARE FOR RESEARCH USE ONLY. NOT FOR DIAGNOSTIC OR THERAPEUTIC USE.

To place your order, please contact us by Phone **1.858.829.3082** Fax **1.858.481.8694**
Or you can Email us at: info@bpsbioscience.com
Please visit our website at: www.bpsbioscience.com



6044 Cornerstone Court West, Suite E
San Diego, CA 92121
Tel: 1.858.829.3082
Fax: 1.858.481.8694
Email: info@bpsbioscience.com

Sequence:

**MHHHHHASKKVCIVGSGNWGSAIAKIVGGNAAQLAQFDPRVTMWVFEEDIGGKKLTE
IINTQHENVKYLPGHKLPPNVVAVPDVVQAAEDADILFVVPHQFIGKICDQLKGHLKANA
TGISLIKGVDEGPNGLKLISEVIGERLGIPMSVLMGANIASEVADEKFCETTIGCKDPAQG
QLLKELMQTPNFRITVVQEVDTVEICGALKNVVAVGAGFCDGLGFGDNTKAAVIRLGLM
EMIAFAKLFCSGPVSSATFLESCGVADLITTCYGGRNRKVAEAFARTGKSIEQLEKELLN
GQKLQGPETARELYSILQHKGLVDKFPLFMAVYKVCYEGQPVGFEIHCLQNHPEHM**

OUR PRODUCTS ARE FOR RESEARCH USE ONLY. NOT FOR DIAGNOSTIC OR THERAPEUTIC USE.

To place your order, please contact us by Phone **1.858.829.3082** Fax **1.858.481.8694**
Or you can Email us at: info@bpsbioscience.com
Please visit our website at: www.bpsbioscience.com