



# SZABO SCANDIC

Part of Europa Biosite

## Produktinformation



Forschungsprodukte & Biochemikalien



Zellkultur & Verbrauchsmaterial



Diagnostik & molekulare Diagnostik



Laborgeräte & Service

Weitere Information auf den folgenden Seiten!  
See the following pages for more information!



### Lieferung & Zahlungsart

siehe unsere [Liefer- und Versandbedingungen](#)

### Zuschläge

- Mindermengenzuschlag
- Trockeneiszuschlag
- Gefahrgutzuschlag
- Expressversand

### SZABO-SCANDIC HandelsgmbH

Quellenstraße 110, A-1100 Wien

T. +43(0)1 489 3961-0

F. +43(0)1 489 3961-7

[mail@szabo-scandic.com](mailto:mail@szabo-scandic.com)

[www.szabo-scandic.com](http://www.szabo-scandic.com)

[linkedin.com/company/szaboscandic](https://www.linkedin.com/company/szaboscandic) 

## Data Sheet

### NAMPT/PBEF1

Human, recombinant, un-tagged  
 Catalog #: 71098  
 Lot #: 130809-C      Conc.: 2.95 mg/ml

**Formulated in:** 40 mM Tris-HCl, pH 8.0, 110 mM NaCl, 2.2 mM KCl, 0.04% Tween-20, and 20% glycerol.

**Stability:** >6 months at -80°C

**References:**

1. Amal, B., *et al.*, *Mol. Cell. Biol.* **14** (2): 1431-7. 1994.
2. Martin, P.R., *et al.*, *J. Bacteriol.* **183** (4): 1168-74. 2001.

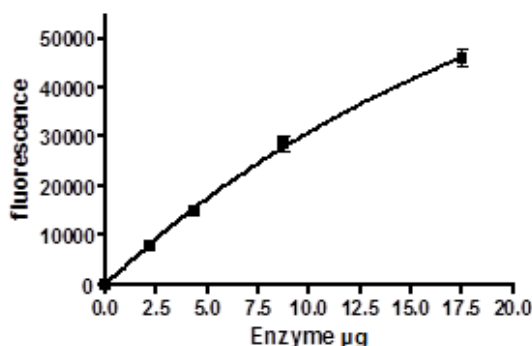
**Description:** Human Nicotinamide phosphoribosyltransferase protein (NAMPT), also known as PBEF1 or visfatin (GenBank Accession No. NM\_005746) a.a. 2-491 (end), no tag, MW=56 kDa, expressed in an *E. coli* cell expression system.

**Specific Activity:** 2 pmol/min/μg  
 Assay conditions: The 50 μl reaction mixture contained 50 mM Tris-HCl, pH 8.0, 12.5 mM MgCl<sub>2</sub>, 0.1 mM nicotinamide, 0.4 mM PRPP, 2 mM ATP, 30 μg/ml of alcohol dehydrogenase, 10 μg/mL of NMNAT (BPS, #71090), 1.5% alcohol, 1 mM DTT, 0.02% BSA. Reactions were incubated at room temperature for 30 min, and the increase in NADH fluorescence (Ex 340 nm/Em 460 nm) was measured.

**Application:** Useful for protein binding assays, screening inhibitors, and selectivity profiling.

## Quality Assurance

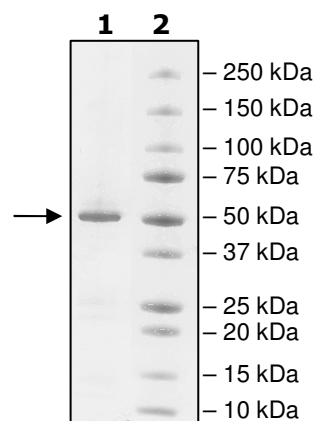
### Specific Activity



### 4-20% SDS-PAGE Coomassie staining

**Lane 1:**  
2 μg NAMPT  
**Lane 2:**  
Protein Marker

**MW:** 56 kDa  
**Purity:** ≥90%



OUR PRODUCTS ARE FOR RESEARCH USE ONLY. NOT FOR DIAGNOSTIC OR THERAPEUTIC USE.

To place your order, please contact us by Phone **1.858.829.3082** Fax **1.858.481.8694**  
 Or you can Email us at: [info@bpsbioscience.com](mailto:info@bpsbioscience.com)  
 Please visit our website at: [www.bpsbioscience.com](http://www.bpsbioscience.com)



6044 Cornerstone Court W, Ste E  
San Diego, CA 92121  
**Tel:** 1.858.829.3082  
**Fax:** 1.858.481.8694  
**Email:** [info@bpsbioscience.com](mailto:info@bpsbioscience.com)

**Sequence:**

**GPLGS**NPAAEAENILLATDSYKVTHYKQYPPNTSKVYSYFECREKKTENSKLRKVKY  
EETVFGYGLQYILNKYLKGVVTKKIQEAKDVYKEHFQDDVFNEKGWNYILEKYDGHL  
PIEIKAVPEGFVIPRGNVLFVENTDPECYWLTNWIETILVQSWYPITVATNSREQKIL  
AKYLLETSGNLDGLEYKLHDFGYRGVSSQETAGIGASAHLVNFKGTDTVAGLALIKKY  
YGTKDPVPGYSVPAAEHSTITAWGKDHEKDAFEHIVTQFSSVPVSVSDSYDIYNACE  
KIWGEDLRHLIVSRSTQAPLIIRPDSGNPLDTVLKVLEILGKKFPVTENSKGYKLLPPYL  
RVIQGDGVDINTLQEIVEGMKQKMWSIENIAFGSGGGLLQKLTRDLLNCSFKCSYVVT  
NGLGINVFKDPVADPNKRSKKGRLSLHRTPAGNFVTTLEEGKGDLEEYGDLLHTVFK  
NGKVTKSYSFDEIRKNAQLNIELEAAHH

OUR PRODUCTS ARE FOR RESEARCH USE ONLY. NOT FOR DIAGNOSTIC OR THERAPEUTIC USE.

To place your order, please contact us by Phone **1.858.829.3082** Fax **1.858.481.8694**  
Or you can Email us at: [info@bpsbioscience.com](mailto:info@bpsbioscience.com)  
Please visit our website at: [www.bpsbioscience.com](http://www.bpsbioscience.com)