



SZABO SCANDIC

Part of Europa Biosite

Produktinformation



Forschungsprodukte & Biochemikalien



Zellkultur & Verbrauchsmaterial



Diagnostik & molekulare Diagnostik



Laborgeräte & Service

Weitere Information auf den folgenden Seiten!
See the following pages for more information!



Lieferung & Zahlungsart

siehe unsere [Liefer- und Versandbedingungen](#)

Zuschläge

- Mindermengenzuschlag
- Trockeneiszuschlag
- Gefahrgutzuschlag
- Expressversand

SZABO-SCANDIC HandelsgmbH

Quellenstraße 110, A-1100 Wien

T. +43(0)1 489 3961-0

F. +43(0)1 489 3961-7

mail@szabo-scandic.com

www.szabo-scandic.com

[linkedin.com/company/szaboscandic](https://www.linkedin.com/company/szaboscandic) 

Data Sheet

IDH1 (R132H)

Human, recombinant, C-terminal FLAG-tag

Catalog #: 71099

Lot#: 130718

Conc.: 0.081 mg/ml

Formulated in: 40 mM Tris-HCl, pH 8.0, 110 mM NaCl, 2.2 mM KCl, 80 µg/ml FLAG peptide, 0.04% Tween-20 and 20% glycerol.

Stability: >6 months at -70°C. Avoid freeze/thaw cycles.

References:

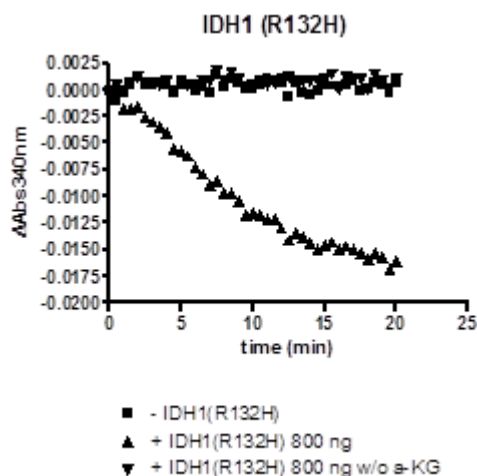
1. Dang, L., *et al.* (2010). *Trends Mol. Med.* **16(9)**:387-97.
2. Paschka, P., *et al.* (2010). *J. Clin. Oncol.* **28(22)**:3636-43.

Description: Human Isocitrate Dehydrogenase (IDH1), also known as oxalosuccinate decarboxylase, GenBank Accession No. NM_005896, full length [a.a. 1-414(end)] with Arg to His mutation on a.a. 132 and C-terminal FLAG-tag, MW= 48 kDa, expressed in Sf9 cells via a baculovirus expression system.

Specific Activity: 53 pmol/min/µg. Assay conditions: IDH reductive activity was measured in 200 µl reaction containing 25 mM Tris (pH 7.4), 150 mM NaCl, 10 mM MgCl₂, 0.03% BSA, 1 mM α-Ketoglutarate, 10 µM NADPH and IDH. Depletion of NADPH was monitored over time at 340 nm. Depletion of NADPH was monitored continuously at Abs340 nm for 20 min. Molar extinction coefficient of NADPH is 6,200 M⁻¹cm⁻¹.

Application: Useful for the study of enzyme kinetics, screening inhibitors, and selectivity profiling.

Quality Assurance

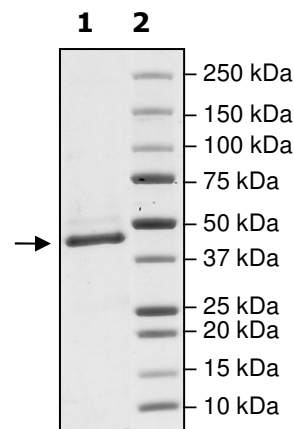


4-20% SDS-PAGE Coomassie staining

Lane 1:
1.6 µg IDH1 (R132H)

Lane 2:
Protein Marker

Purity: ≥90%
MW: 48 kDa



OUR PRODUCTS ARE FOR RESEARCH USE ONLY. NOT FOR DIAGNOSTIC OR THERAPEUTIC USE.

To place your order, please contact us by Phone **1.858.829.3082** Fax **1.858.481.8694**

Or you can Email us at: info@bpsbioscience.com

Please visit our website at: www.bpsbioscience.com



6044 Cornerstone Court West, Suite E
San Diego, CA 92121
Tel: 1.858.829.3082
Fax: 1.858.481.8694
Email: info@bpsbioscience.com

Sequence:

MSKKISGGSVVEMQGDDEMTRIIWELIKEKLIFPYVELDLHSYDLGIENRDATNDQVTKDA
AEAIAKKHNVGVKCATITPDEKRVVEEFKLKQMWKSPNGTIRNILGGTVFREAIICKNIPRLV
SGWVKPIIIGHHAYGDQYRATDFVVPGGPKVEITYTPSDGTQKVTYLVHNFEEGGGVA
MGMYNQDKSIEDFAHSSFQMALSKGWPLYLSTKNTILKKYDGRFKDIFQEIYDKQYKSQ
FEAQKIWYEHRLIDDMVAQAMKSEGGFIWACKNYDGDVQSDSVAQGYGSLGMMTSVL
VCPDGKTVEAAAHGTVTRHYRMYQKGQETSTNPIASIFAWTRGLAHRAKLDNNKELA
FFANALEEVSITIEAGFMTKDLAACIKGLPNVQRSDYLNTFEFMDKLGLENLKIKLAQAKL
DYKDDDDK

OUR PRODUCTS ARE FOR RESEARCH USE ONLY. NOT FOR DIAGNOSTIC OR THERAPEUTIC USE.

To place your order, please contact us by Phone **1.858.829.3082** Fax **1.858.481.8694**
Or you can Email us at: info@bpsbioscience.com
Please visit our website at: www.bpsbioscience.com