



# SZABO SCANDIC

Part of Europa Biosite

## Produktinformation



Forschungsprodukte & Biochemikalien



Zellkultur & Verbrauchsmaterial



Diagnostik & molekulare Diagnostik



Laborgeräte & Service

Weitere Information auf den folgenden Seiten!  
See the following pages for more information!



### Lieferung & Zahlungsart

siehe unsere [Liefer- und Versandbedingungen](#)

### Zuschläge

- Mindermengenzuschlag
- Trockeneiszuschlag
- Gefahrgutzuschlag
- Expressversand

### SZABO-SCANDIC HandelsgmbH

Quellenstraße 110, A-1100 Wien

T. +43(0)1 489 3961-0

F. +43(0)1 489 3961-7

[mail@szabo-scandic.com](mailto:mail@szabo-scandic.com)

[www.szabo-scandic.com](http://www.szabo-scandic.com)

[linkedin.com/company/szaboscandic](https://www.linkedin.com/company/szaboscandic) 

## Data Sheet

### GLS1, His-tag

Human, recombinant, N-terminal His-tag  
**Catalog #:** 71102  
**Lot #:** 150622      **Conc.:** 0.90 mg/ml

**Formulated in:** 40 mM Tris-HCl, pH 8.0, 110 mM NaCl, 2.2 mM KCl, 0.04% Tween-20, and 20% glycerol

**Stability:** At least 6 months at -80°C. Avoid freeze/thaw cycles. Storing diluted enzyme is not recommended, if necessary, use carrier protein (BSA 0.1 – 0.5%).

**References:**

1. Van den Heuvel, A.P., *et al.*, *Cancer Biol. Ther.* 2012;**13**(12):1185-1194.
2. Thangavelu, K., *et al.*, *Proc. Natl. Acad. Sci. USA* 2012;**109**(2):7705-7710.

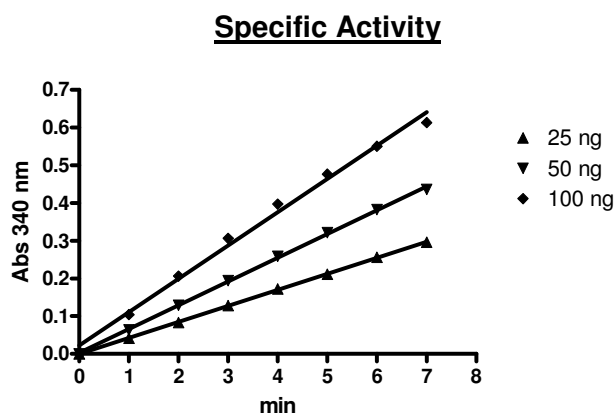
**Description:** Human glutaminase (GLS), also known as glutaminase transcript variant 1 (GLS1), GAC, GAM and KGA, GenBank Accession No. NM\_014905, a.a. 17-669(end), with N-terminal His-tag, MW 72.5 kDa, expressed in an *E. coli* cell expression system.

**Specific Activity:** 25 nmol/min/μg

**Assay conditions:** The reaction mixture contained 100 mM Tris, pH 8.6, 150 mM K<sub>2</sub>HPO<sub>4</sub>, 25 mM L-glutamine, 2 mM NAD<sup>+</sup>, 4 units of GDH, and various amounts of GLS1 in a volume of 200 μL. Reactions were initiated with the addition of GLS1, and the increase in NADH absorbance at 340 nm was continuously monitored for 7 min at 37°C. Molar extinction coefficient of NADH is 6,220 M<sup>-1</sup>cm<sup>-1</sup>.

**Application:** Useful for the study of enzyme kinetics, screening inhibitors, and selectivity profiling.

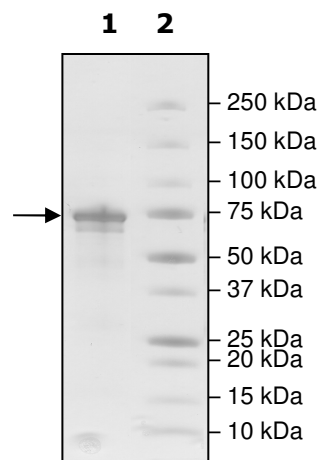
### Quality Assurance



**4-20% SDS-PAGE  
 Coomassie staining**

**Lane 1:**  
 4 μg GLS1  
**Lane 2:**  
 Protein Marker

**MW:** 72.5 kDa  
**Purity:** ≥80%



OUR PRODUCTS ARE FOR RESEARCH USE ONLY. NOT FOR DIAGNOSTIC OR THERAPEUTIC USE.

To place your order, please contact us by Phone **1.858.829.3082** Fax **1.858.481.8694**  
 Or you can Email us at: [info@bpsbioscience.com](mailto:info@bpsbioscience.com)  
 Please visit our website at: [www.bpsbioscience.com](http://www.bpsbioscience.com)



6044 Cornerstone Court West, Suite E  
San Diego, CA 92121  
Tel: 1.858.829.3082  
Fax: 1.858.481.8694  
Email: [info@bpsbioscience.com](mailto:info@bpsbioscience.com)

**Sequence:**

MHHHHHSPAGVSATLRRRAQPLVTL CRRPRGGGRPAAGPAAAARLHPWWGGGGWP  
AEPLARGLSSSPSEILQELGKGSTHPQPGVSPPAAPAAPGPKDGPGETDAFGNSEGKE  
LVASGENKIKQGLLPSLEDLLFYTIAEGQEKIPVHKFITALKSTGLRTSDPRLKECMDML  
RLTLQTTSDGVMLDKDLFKKCVQSNIVLLTQAFRRKFVIPDFMSFTSHIDELYESAKKQS  
GGKVADYIPQLAKFSPDLWGVSVCTVDGQRHSTGDTKVPFCLQSCVKPLKYAIAVNDL  
GTEYVHRYVGKEPSGLRFNKLFLNEDDKPHNPMVNAGAI VVTSLIKQGVNNAEKFDYV  
MQFLNKMAGNEYVGF SNATFQSERESGDRNFAIGYYLKEKKCFPEGTDMVGILDFYFQ  
LCSIEVTCESASVMAATLANGGFCPITGERVLSPEAVRNTLSLMHSCGMYDFSGQFAFH  
VGLPAKSGVAGGILLVVPNVMGMMCWSPPLDKMGNSVKGIHFCHDLVSLCNFHNYDN  
LRHFAKKLDPRREGGDQRVKSVINLLFAAYTGDVSALRRFALSAMDMEQRDYDSRTAL  
HVAAAEGHVEVVKFLLEACKVNPFPKDRWNNTPMDEALHFGHHDVFKILQEYQVQYTP  
QGSDSNGKENQTVHKNL DGLL

OUR PRODUCTS ARE FOR RESEARCH USE ONLY. NOT FOR DIAGNOSTIC OR THERAPEUTIC USE.

To place your order, please contact us by Phone **1.858.829.3082** Fax **1.858.481.8694**  
Or you can Email us at: [info@bpsbioscience.com](mailto:info@bpsbioscience.com)  
Please visit our website at: [www.bpsbioscience.com](http://www.bpsbioscience.com)