



SZABO SCANDIC

Part of Europa Biosite

Produktinformation



Forschungsprodukte & Biochemikalien



Zellkultur & Verbrauchsmaterial



Diagnostik & molekulare Diagnostik



Laborgeräte & Service

Weitere Information auf den folgenden Seiten!
See the following pages for more information!



Lieferung & Zahlungsart

siehe unsere [Liefer- und Versandbedingungen](#)

Zuschläge

- Mindermengenzuschlag
- Trockeneiszuschlag
- Gefahrgutzuschlag
- Expressversand

SZABO-SCANDIC HandelsgmbH

Quellenstraße 110, A-1100 Wien

T. +43(0)1 489 3961-0

F. +43(0)1 489 3961-7

mail@szabo-scandic.com

www.szabo-scandic.com

[linkedin.com/company/szaboscandic](https://www.linkedin.com/company/szaboscandic) 

Data Sheet

PD-L1 (CD274), Fc fusion

Human, recombinant, C-terminal Fc fusion protein

Catalog #: 71104-3

Lot #: 160329-2 **Conc.:** 2.38 mg/ml

Formulated in: 8 mM Phosphate, pH 7.4, 110 mM NaCl, 2.2 mM KCl, and 20% glycerol

Stability: At least 6 months at -80°C . Avoid freeze/thaw cycles. Protein may be diluted to $\geq 100 \mu\text{g/ml}$ in PBS + glycerol and stored at -80°C .

Endotoxin Level: $<1 \text{ EU}/\mu\text{g}$

References:

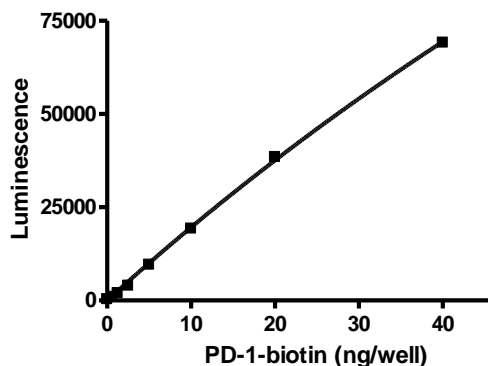
1. Freeman, G.J., *et al.*, *J Exp Med.* 2000 Oct 2;**192(7)**:1027-34.
2. Dong, H., *et al.*, *Nat Med.* 1999 Dec;**5(12)**:1365-9.

Description: Human secreted Programmed Cell Death 1 Ligand 1 (PD-L1)-Fc fusion protein, also known as CD274 and B7 homolog 1 (B7-H1), GenBank Accession No. NM_014143, amino acids 19-239, fused at the C-terminus to the Fc portion of human IgG1, expressed in a HEK293 cell expression system. MW = 52 kDa.

Assay Conditions: PD-L1 binding to PD-1 was tested following protocol for BPS Cat. #72005. Briefly, wells were coated with 10 ng of PD-L1 in PD-1 assay buffer. Varying concentrations of biotinylated PD-1 was added and wells were incubated at room temp. for 2 hours before adding strep-HRP, followed by chemiluminescent substrate. Luminescence was read on a chemiluminescent plate reader.

Application: Useful for the study of protein-protein interaction and *in vitro* and *in vivo* protein function.

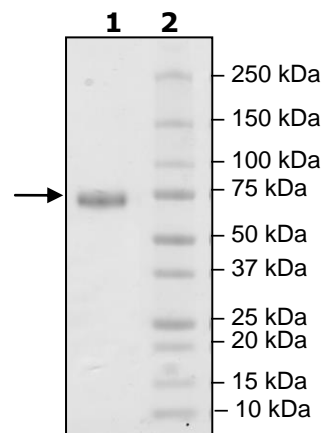
Quality Assurance



**4-20% SDS-PAGE
 Coomassie staining**

Lane 1:
 2 μg PD-L1-Fc
Lane 2:
 Protein Marker

MW: 52 kDa
Purity: $\geq 90\%$



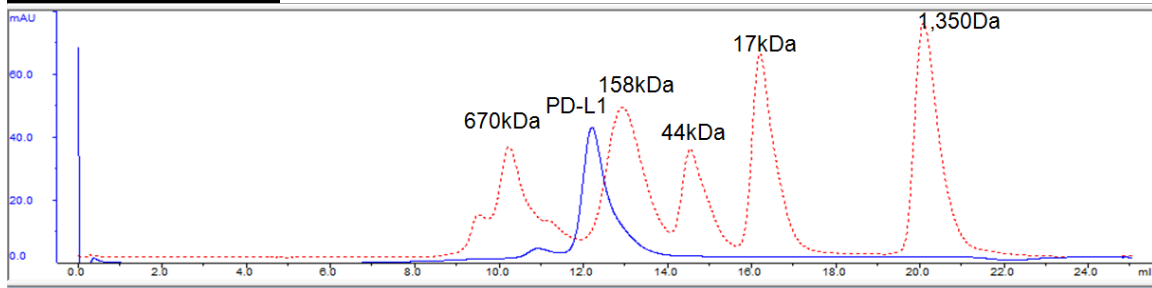
OUR PRODUCTS ARE FOR RESEARCH USE ONLY. NOT FOR DIAGNOSTIC OR THERAPEUTIC USE.

To place your order, please contact us by Phone **1.858.829.3082** Fax **1.858.481.8694**
 Or you can Email us at: info@bpsbioscience.com
 Please visit our website at: www.bpsbioscience.com



6044 Cornerstone Court W, Ste E
San Diego, CA 92121
Tel: 1.858.829.3082
Fax: 1.858.481.8694
Email: info@bpsbioscience.com

Gel Filtration Curve:



Sequence:

FTVTVPKDLVVVEYGSNMTIECKFPVEKQLDLAALIVWEMEDKNIIQFVHGEEEDLKVQ
HSSYRQRARLLKDQLSLGNAALQITDVKLQDAGVYRCMISYGGADYKRITVKVNAPY
NKINQRILVVDPTSEHELTCQAEGYPKAEVIWTSSDHQVLSGKTTTTNSKREEKLFN
VTSTLRINTTTNEIFYCTFRRLDPEENHTAELVIPELPLAHPNERTDIEGRMDPKSCDK
THTCPPCPAPELLGGPSVFLFPPKPKDTLMISRTPEVTCVVVDVSHEDPEVKFNWYVD
GVEVHNAKTKPREEQYNSTYRVVSVLTVLHQDWLNGKEYKCKVSNKALPAPIEKTISKA
KGQPREPQVYTLPPSREEMTKNQVSLTCLVKGFYPSDIAVEWESNGQPENNYKTTTP
VLDSGDGSFFLYSKLTVDKSRWQQGNVFCFSVMHEALHNHYTQKSLSLSPGK

Black: PD-L1 (a.a. 19-239)

Green: Linker

Red: Fc of human IgG1 (a.a.100-330)

OUR PRODUCTS ARE FOR RESEARCH USE ONLY. NOT FOR DIAGNOSTIC OR THERAPEUTIC USE.

To place your order, please contact us by Phone **1.858.829.3082** Fax **1.858.481.8694**
Or you can Email us at: info@bpsbioscience.com
Please visit our website at: www.bpsbioscience.com