



SZABO SCANDIC

Part of Europa Biosite

Produktinformation



Forschungsprodukte & Biochemikalien



Zellkultur & Verbrauchsmaterial



Diagnostik & molekulare Diagnostik



Laborgeräte & Service

Weitere Information auf den folgenden Seiten!
See the following pages for more information!



Lieferung & Zahlungsart

siehe unsere [Liefer- und Versandbedingungen](#)

Zuschläge

- Mindermengenzuschlag
- Trockeneiszuschlag
- Gefahrgutzuschlag
- Expressversand

SZABO-SCANDIC HandelsgmbH

Quellenstraße 110, A-1100 Wien

T. +43(0)1 489 3961-0

F. +43(0)1 489 3961-7

mail@szabo-scandic.com

www.szabo-scandic.com

[linkedin.com/company/szaboscandic](https://www.linkedin.com/company/szaboscandic) 

Data Sheet

PD-L2 (CD273), Fc fusion

Human, recombinant, Fc fusion protein
Catalog #: 71107
Lot #: 150120 **Conc.:** 2.83 mg/ml

Formulated in: 40 mM Tris-HCl, pH 8.0, 110 mM NaCl, 2.2 mM KCl, and 20% glycerol

Stability: At least 6 months at -80°C . Avoid freeze/thaw cycles. Protein may be diluted to $\geq 100 \mu\text{g/ml}$ in PBS + glycerol and stored at -80°C .

References:

1. Latchman, Y., *et al.*, *Nat. Immunol.* 2001 Mar;**2(3)**:261-8.
2. Saunders, P.A., *et al.*, *Eur. J. Immunol.* 2005 Dec;**35(12)**:3561-9.

Description:

Human secreted Programmed Death Ligand 2 (PD-L2)-Fc fusion protein, also known as CD273, PDCDL1G2, and B7-DC, GenBank Accession No. NM_025239, a.a. 20-219, fused at the C-terminus to the Fc portion of human IgG1 expressed in a HEK293 cell expression system. MW = 49 kDa.

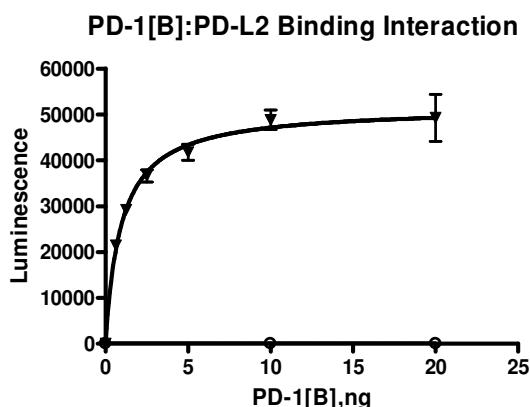
Assay Conditions:

PD-1-PD-L2 binding activity, measured using the using the PD-1[Biotinylated]:PD-L2 Inhibitor Screening Assay Kit, BPS Bioscience, Catalog #72006

Application:

Useful for the study of protein-protein interaction and *in vitro* and *in vivo* protein function.

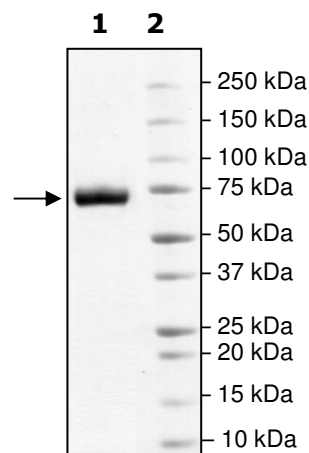
Quality Assurance



**4-20% SDS-PAGE
 Coomassie staining**

Lane 1:
 4 μg PD-L2-Fc
Lane 2:
 Protein Marker

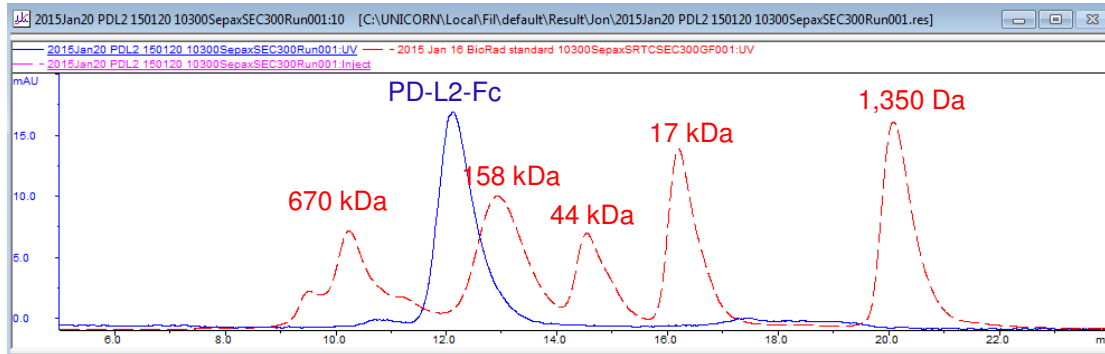
MW: 49 kDa + glycans
Purity: $\geq 90\%$



OUR PRODUCTS ARE FOR RESEARCH USE ONLY. NOT FOR DIAGNOSTIC OR THERAPEUTIC USE.

To place your order, please contact us by Phone **1.858.829.3082** Fax **1.858.481.8694**
 Or you can Email us at: info@bpsbioscience.com
 Please visit our website at: www.bpsbioscience.com

Gel Filtration Curve



Sequence:

LFTVTVPKELYIIIEHGSNVTLECNFDTGSHVNLGAITASLQKVENDTSPHRERATLLEEQ
 LPLGKASFHIPQVQVRDEGQYQCIIYGVAWDYKYLTCLKVKASYRKINTHILKVPETDEVE
 LTCQATGYPLAEVSWPNVSPANTSHSRTPEGLYQVTSVLRLKPPPGRNFSCVFWNT
 HVRELTASIDLQSQMEPRTHPIEGRMDPKSCDKTHTCPPCPAPPELLGGPSVFLFPPKP
 KDTLMISRTPEVTCVVVDVSHEDPEVKFNWYVDGVEVHNAKTKPREEQYNSTYRVVSV
 LTVLHQDWLNGKEYKCKVSNKALPAPIEKTISKAKGQPREPQVYTLPPSREEMTKNQV
 SLTCLVKGFPYSDIAVEWESNGQPENNYKTTTPVLDSDGSFFLYSKLTVDKSRWQQGN
 VFSCSVMHEALHNHYTQKSLSLSPGK

Black: PD-L2 (a.a. 20-219)

Green: linker

Red: Fc Fusion human IgG (a.a. 100-330)

OUR PRODUCTS ARE FOR RESEARCH USE ONLY. NOT FOR DIAGNOSTIC OR THERAPEUTIC USE.

To place your order, please contact us by Phone **1.858.829.3082** Fax **1.858.481.8694**

Or you can Email us at: info@bpsbioscience.com

Please visit our website at: www.bpsbioscience.com