



SZABO SCANDIC

Part of Europa Biosite

Produktinformation



Forschungsprodukte & Biochemikalien



Zellkultur & Verbrauchsmaterial



Diagnostik & molekulare Diagnostik



Laborgeräte & Service

Weitere Information auf den folgenden Seiten!
See the following pages for more information!



Lieferung & Zahlungsart

siehe unsere [Liefer- und Versandbedingungen](#)

Zuschläge

- Mindermengenzuschlag
- Trockeneiszuschlag
- Gefahrgutzuschlag
- Expressversand

SZABO-SCANDIC HandelsgmbH

Quellenstraße 110, A-1100 Wien

T. +43(0)1 489 3961-0

F. +43(0)1 489 3961-7

mail@szabo-scandic.com

www.szabo-scandic.com

[linkedin.com/company/szaboscandic](https://www.linkedin.com/company/szaboscandic) 

Data Sheet

PD-1 (PDCD1), Biotin-labeled

Human, recombinant, Fc fusion protein with C-terminal Avi-tag™

Catalog #: 71109

Lot #: 150121-B

Conc.: 3.72 mg/ml

Formulated in: 8 mM phosphate, pH 7.4, 110 mM NaCl, 2.2 mM KCl, and 20% glycerol

Stability: At least 6 months at -80°C . Avoid freeze/thaw cycles. Protein may be diluted to $\geq 100 \mu\text{g/ml}$ in PBS + glycerol and stored at -80°C .

References:

1. Shinohara, T., *et al.*, *Genomics*. 1994 Oct;**23(3)**:704-6.
2. James, E.S., *et al.*, *Genes Immun*. 2005 Aug;**6(5)**:430-7.

Description:

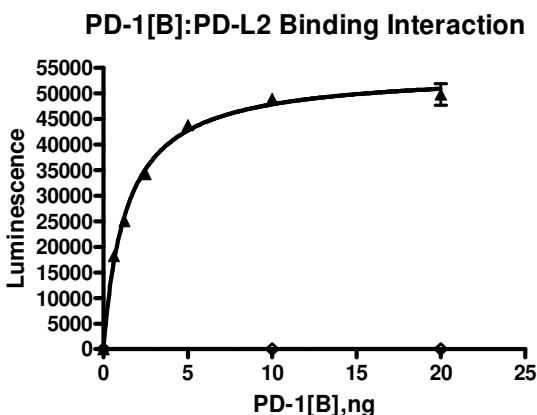
Human secreted programmed cell death 1 (PD-1)-Fc fusion protein, also known as, PDCD1, SLEB2, CD279 and HPD-L, GenBank Accession No. NM_005018, a.a 25-167, fused at the C-terminus to the Fc portion of human IgG1, with C-terminal Avi-tag™ expressed in a HEK293 cell expression system and enzymatically biotin-labeled using Avi-tag™ technology. MW = 44.5 kDa. This protein runs at a higher M.W. by SDS-PAGE due to glycosylation.

Assay Description: BPS Cat. 72005 protocol was followed. Briefly, 50 μl of 2 $\mu\text{g/ml}$ PD-L1 was coated onto plates. 20 μl of 0.5 $\mu\text{g/ml}$ PD-1, Biotin-labeled was allowed to bind at room temp. for 2 hours. Strep-HRP was added and allowed to incubate at room temp for 1 hr, followed by HRP chemiluminescent substrate addition and plate reading.

Application:

Useful for the study of protein-protein interaction and *in vitro* and *in vivo* protein function.

Quality Assurance

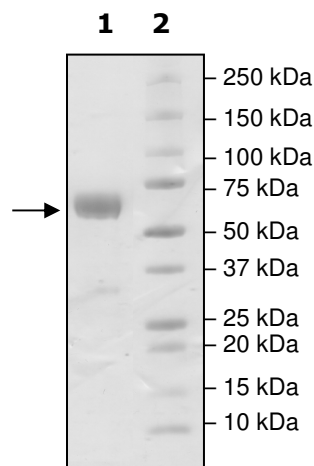


4-20% SDS-PAGE Coomassie staining

Lane 1:
4 μg PD-1

Lane 2:
Protein Marker

MW: 44.5kDa
Purity: $\geq 90\%$



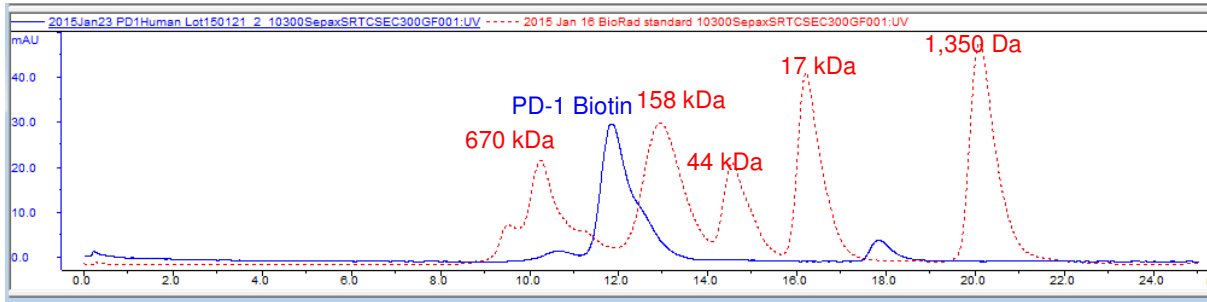
OUR PRODUCTS ARE FOR RESEARCH USE ONLY. NOT FOR DIAGNOSTIC OR THERAPEUTIC USE.

To place your order, please contact us by Phone **1.858.829.3082** Fax **1.858.481.8694**

Or you can Email us at: info@bpsbioscience.com

Please visit our website at: www.bpsbioscience.com

Gel Filtration Curve:



Sequence:

**LDSPDRPWNPTTFSPALLVVTEGDNATFTCSFSNTSESFVLNWYRMSPSNQTDKLAA
 FPEDRSQPGQDCRFRVTQLPNGRDFHMSVVRARRNDSGTYLCGAISLAPKAQIKESL
 RAELRVTERRAEVPTAHPSPSPRPAGQFQIEGRMDPKSCDKTHTCPPCPAPELLGGP
 SVFLFPPKPKDTLMISRTPEVTCVVVDVSHEDPEVKFNWYVDGVEVHNAKTKPREEQY
 NSTYRVVSVLTVLHQDWLNGKEYKCKVSNKALPAPIEKTISKAKGQPREPQVYTLPPSR
 EEMTKNQVSLTCLVKGFYPSDIAVEWESNGQPENNYKTTTPVLDSDGSFFLYSKLTVD
 KSRWQQGNVVFSCSVMHEALHNHYTQKLSLSLSPGKGGGLNDIFEAQKIEWHE**

Black: PD-1 (a.a. 25-167)
 Green: Linker
 Red: Fc of human IgG1 (a.a. 100-330)
 Blue: Avi-tag™

OUR PRODUCTS ARE FOR RESEARCH USE ONLY. NOT FOR DIAGNOSTIC OR THERAPEUTIC USE.

To place your order, please contact us by Phone **1.858.829.3082** Fax **1.858.481.8694**
 Or you can Email us at: info@bpsbioscience.com
 Please visit our website at: www.bpsbioscience.com