



SZABO SCANDIC

Part of Europa Biosite

Produktinformation



Forschungsprodukte & Biochemikalien



Zellkultur & Verbrauchsmaterial



Diagnostik & molekulare Diagnostik



Laborgeräte & Service

Weitere Information auf den folgenden Seiten!
See the following pages for more information!



Lieferung & Zahlungsart

siehe unsere [Liefer- und Versandbedingungen](#)

Zuschläge

- Mindermengenzuschlag
- Trockeneiszuschlag
- Gefahrgutzuschlag
- Expressversand

SZABO-SCANDIC HandelsgmbH

Quellenstraße 110, A-1100 Wien

T. +43(0)1 489 3961-0

F. +43(0)1 489 3961-7

mail@szabo-scandic.com

www.szabo-scandic.com

[linkedin.com/company/szaboscandic](https://www.linkedin.com/company/szaboscandic) 

Data Sheet

PD-1 (PDCD1), Biotin-labeled

Human, Recombinant, Fc fusion protein with C-terminal Avi-tag™

Catalog #: 71109-2 "500ug"

Lot #: 161130

Conc.: 1.36 mg/ml when reconstituted as below

Formulated in: Reconstitute in 37 µl dH2O containing 20% glycerol to reach 8 mM Phosphate, pH 7.4, 110 mM NaCl, 2.2 mM KCl, and 20% glycerol.

Format/Appearance: Lyophilized protein in PBS solution

Stability: At least 6 months at -80°C. *Avoid freeze/thaw cycles. Protein may be diluted to ≥ 100 µg/ml in PBS + glycerol and stored at -80°C.*

References:

1. Shinohara, T., *et al.*, *Genomics*. 1994 Oct;**23(3)**:704-6.
2. James, E.S., *et al.*, *Genes Immun*. 2005 Aug;**6(5)**:430-7.

Description:

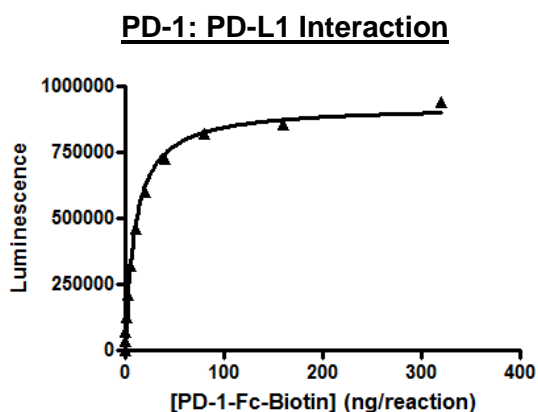
Human secreted programmed cell death 1 (PD-1)-Fc fusion protein, also known as, PDCD1, SLEB2, CD279 and HPD-L, GenBank Accession No. NM_005018, a.a 25-167, fused at the C-terminus to the Fc portion of human IgG1, with C-terminal Avi-tag™ expressed in a HEK293 cell expression system and enzymatically biotin-labeled using Avi-tag™ technology. MW = 45 kDa. This protein runs at a higher M.W. by SDS-PAGE due to glycosylation.

Assay Description: Coated wells in assay plate with either PBS (No Coat) or 100 ng/well of PD-L1-Fc in 50 µl PBS (overnight at 4 deg). Mixed various concentrations of PD-1-Fc-biotin (0-320 ng/reaction) in assay buffer and added to assay plate wells. Incubated for 2h at RT. Detected binding with Strep-HRP generated luminescence.

Application:

Useful for the study of protein-protein interaction and *in vitro* and *in vivo* protein function.

Quality Assurance



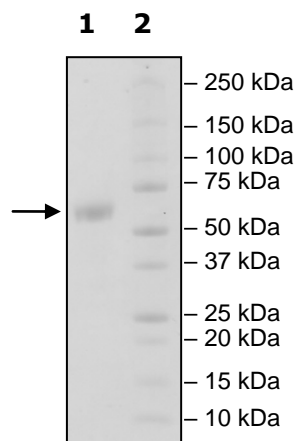
**4-20% SDS-PAGE
Coomassie staining**

Lane 1:
3µg PD-1

Lane 2:
Protein Marker

MW: 45 kDa+glycans

Purity: ≥90%



OUR PRODUCTS ARE FOR RESEARCH USE ONLY. NOT FOR DIAGNOSTIC OR THERAPEUTIC USE.

To place your order, please contact us by Phone **1.858.829.3082** Fax **1.858.481.8694**
 Or you can Email us at: info@bpsbioscience.com
 Please visit our website at: www.bpsbioscience.com



6044 Cornerstone Court W, Ste E
San Diego, CA 92121
Tel: 1.858.829.3082
Fax: 1.858.481.8694
Email: info@bpsbioscience.com

Sequence:

LDSPDRPWNPPTFSPALLVVTEGDNATFTCSFSNTSESFVLNWYRMSPSNQTDKLAA
FPEDRSQPGQDCRFRVTQLPNGRDFHMSVVRARRNDSGTYLCGAISLAPKAQIKESL
RAELRVTERRAEVPTAHPSPSPRPAGQFQIEGRMDPKSCDKTHTCPPCPAPPELLGGP
SVFLFPPKPKDTLMISRTPEVTCVVVDVSHEDPEVKFNWYVDGVEVHNAKTKPREEQY
NSTYRVVSVLTVLHQDWLNGKEYKCKVSNKALPAPIEKTISKAKGQPREPQVYTLPPSR
EEMTKNQVSLTCLVKGFYPSDIAVEWESNGQPENNYKTTTPVLDSGDSFFLYSKLTVD
KSRWQQGNVFCFSVMHEALHNHYTQKSLSLSPGKGGGLNDIFEAQKIEWHE

Black: PD-1 (a.a. 25-167)

Green: Linker

Red: Fc of human IgG1 (a.a. 100-330)

Blue: Avi-tag™

OUR PRODUCTS ARE FOR RESEARCH USE ONLY. NOT FOR DIAGNOSTIC OR THERAPEUTIC USE.

To place your order, please contact us by Phone **1.858.829.3082** Fax **1.858.481.8694**

Or you can Email us at: info@bpsbioscience.com

Please visit our website at: www.bpsbioscience.com