



SZABO SCANDIC

Part of Europa Biosite

Produktinformation



Forschungsprodukte & Biochemikalien



Zellkultur & Verbrauchsmaterial



Diagnostik & molekulare Diagnostik



Laborgeräte & Service

Weitere Information auf den folgenden Seiten!
See the following pages for more information!



Lieferung & Zahlungsart

siehe unsere [Liefer- und Versandbedingungen](#)

Zuschläge

- Mindermengenzuschlag
- Trockeneiszuschlag
- Gefahrgutzuschlag
- Expressversand

SZABO-SCANDIC HandelsgmbH

Quellenstraße 110, A-1100 Wien

T. +43(0)1 489 3961-0

F. +43(0)1 489 3961-7

mail@szabo-scandic.com

www.szabo-scandic.com

[linkedin.com/company/szaboscandic](https://www.linkedin.com/company/szaboscandic) 

Data Sheet

LTBR

Human, recombinant, Fc fusion protein

Catalog #: 71112

Lot#: 131113-D **Conc.:** 0.70 mg/ml

Formulated in: 40 mM Tris-HCl, pH 8.0,
110 mM NaCl, 2.2 mM KCl, and 20%
glycerol

Stability: >6 months at -80°C . *Avoid
freeze/thaw cycles.*

References:

1. Crowe, P.D., *et al.*, *Science*. 1994
Apr 29;**264(5159)**:707-10.
2. Wu, M.Y., *et al.*, *J Biol Chem*. 1999
Apr 23;**274(17)**:11868-73.

Description:

Human secreted lymphotoxin beta receptor (LTBR)-Fc fusion protein, also known as, Tumor Necrosis Factor C Receptor (TNFCR), and CD18, GenBank Accession No. NM_002342, a.a 28-219, expressed in a HEK293 cell expression system. MW = 48 kDa (monomer). This protein runs at a higher apparent M.W. by SDS-PAGE due to glycosylation.

Application:

Useful for the study of enzyme kinetics, screening inhibitors, and selectivity profiling.

Quality Assurance

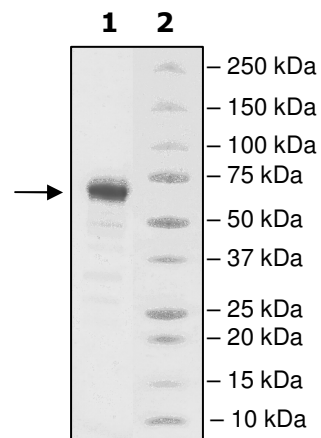
4-20% SDS-PAGE Coomassie staining

Lane 1:
3.5 μg LTBR-Fc

Lane 2:
Protein Marker

MW: 48 kDa

Purity: $\geq 90\%$



OUR PRODUCTS ARE FOR RESEARCH USE ONLY. NOT FOR DIAGNOSTIC OR THERAPEUTIC USE.

To place your order, please contact us by Phone **1.858.829.3082** Fax **1.858.481.8694**

Or you can Email us at: info@bpsbioscience.com

Please visit our website at: www.bpsbioscience.com



6044 Cornerstone Court W, Ste E
San Diego, CA 92121
Tel: 1.858.829.3082
Fax: 1.858.481.8694
Email: info@bpsbioscience.com

Sequence:

SQPQAVPPYASENQTCRDQEKEYYEPQHRICCSRCPPGTYVSAKCSRIRDTCATCA
ENSYNEHWNYLTICQLCRPCDPVMGLEEIAPCTSKRKTQCRCQPGMFCAAWALECT
HCELLSDCPPGTEAELKDEVGKGNHCVPCAGHFQNTSSPSARCQPHTRCENQGL
VEAAPGTAQSDTTCKNPLEPLPP**DI****GR****M****D****PK****S****C****D****K****T****H****T****C****P****P****C****A****P****E****L****L****G****G****P****S****V****F****L****F****P**
PK**P****K****D****T****L****M****I****S****R****T****P****E****V****T****C****V****V****D****V****S****H****E****D****P****E****V****K****F****N****W****Y****V****D****G****V****E****V****H****N****A****K****T****K****P****R****E****E****Q****Y****N****S****T****Y****R****V**
V**S****V****L****T****V****L****H****Q****D****W****L****N****G****K****E****Y****K****C****K****V****S****N****K****A****L****P****A****P****I****E****K****T****I****S****K****A****K****G****Q****P****R****E****P****Q****V****Y****T****L****P****P****S****R****E****E****M****T****K****N**
Q**V****S****L****T****C****L****V****K****G****F****Y****P****S****D****I****A****V****E****W****E****S****N****G****Q****P****E****N****N****Y****K****T****T****P****P****V****L****D****S****D****G****S****F****F****L****Y****S****K****L****T****V****D****K****S****R****W****Q****Q**
G**N****V****F****S****C****S****V****M****H****E****A****L****H****N****H****Y****T****Q****K****S****L****S****L****S****P****G****K**

Black: LTBR (aa 28-219)

Blue: linker

Red: Fc of human IgG1

OUR PRODUCTS ARE FOR RESEARCH USE ONLY. NOT FOR DIAGNOSTIC OR THERAPEUTIC USE.

To place your order, please contact us by Phone **1.858.829.3082** Fax **1.858.481.8694**

Or you can Email us at: info@bpsbioscience.com

Please visit our website at: www.bpsbioscience.com