



# SZABO SCANDIC

Part of Europa Biosite

## Produktinformation



Forschungsprodukte & Biochemikalien



Zellkultur & Verbrauchsmaterial



Diagnostik & molekulare Diagnostik



Laborgeräte & Service

Weitere Information auf den folgenden Seiten!  
See the following pages for more information!



### Lieferung & Zahlungsart

siehe unsere [Liefer- und Versandbedingungen](#)

### Zuschläge

- Mindermengenzuschlag
- Trockeneiszuschlag
- Gefahrgutzuschlag
- Expressversand

### SZABO-SCANDIC HandelsgmbH

Quellenstraße 110, A-1100 Wien

T. +43(0)1 489 3961-0

F. +43(0)1 489 3961-7

[mail@szabo-scandic.com](mailto:mail@szabo-scandic.com)

[www.szabo-scandic.com](http://www.szabo-scandic.com)

[linkedin.com/company/szaboscandic](https://www.linkedin.com/company/szaboscandic) 

## Data Sheet

### CD28

Human, recombinant, Fc fusion protein  
 Catalog #: 71113  
 Lot#: 180530                      Conc.: 0.69 mg/ml

**Formulated in:** 8 mM Phosphate, pH 7.4,  
 110 mM NaCl, 2.2 mM KCl, and 20%  
 glycerol.

**Stability:** >6 months at -80°C. *Avoid  
 freeze/thaw cycles. Protein may be diluted to  
 ≥ 100 µg/ml in PBS + glycerol and stored at  
 -80°C.*

#### References:

1. Byrum, J.N., Van Komen, J.S.,  
 Rodgers, W., *J. Immunol.* 2013 Sep  
 15;191(6):3073-3081.
2. Legat, A., *et al.*, *Front Immunol.* 2013  
 Dec 19;4:455.

#### Description:

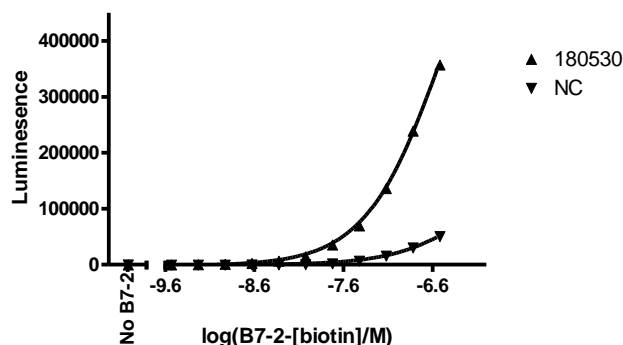
Human secreted CD28-Fc fusion protein,  
 also known as TP44, GenBank Accession  
 No. NM\_006139, a.a 19-152, expressed in  
 a HEK293 cell expression system. MW =  
 41.4 kDa (monomer). This protein runs at a  
 higher M.W. by SDS-PAGE due to  
 glycosylation.

#### Application:

Useful for the study of protein-protein  
 interaction and in vitro and in vivo protein  
 function studies.

## Quality Assurance

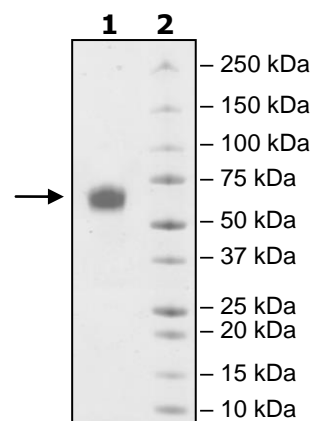
CD28:B7-2 [B] Interaction



#### 4-20% SDS-PAGE Coomassie staining

**Lane 1:**  
 2 µg CD28-Fc  
**Lane 2:**  
 Protein Marker

**MW:** 41.4 kDa + glycans  
**Purity:** ≥90%



OUR PRODUCTS ARE FOR RESEARCH USE ONLY. NOT FOR DIAGNOSTIC OR THERAPEUTIC USE.

To place your order, please contact us by Phone **1.858.829.3082** Fax **1.858.481.8694**  
 Or you can Email us at: [info@bpsbioscience.com](mailto:info@bpsbioscience.com)  
 Please visit our website at: [www.bpsbioscience.com](http://www.bpsbioscience.com)



6042 Cornerstone Court W, Ste B  
San Diego, CA 92121  
**Tel:** 1.858.829.3082  
**Fax:** 1.858.481.8694  
**Email:** [info@bpsbioscience.com](mailto:info@bpsbioscience.com)

**Sequence:**

**NKILVKQSPMLVAYDNAVNLSCKYSYNLFSREFRASLHKGLDSAVEVCVVYGNYSQQ**  
**LQVYSKTGFNCDGKLGNESVTFYLQNLVYNQTDIYFCKIEVMYPPPYLDNEKSNGTIIH**  
**VKGKHLCPSPFLFPGPSKPDMDPKSCDKTHTCPPCPAPPELLGGPSVFLFPPKPKDTLMI**  
**SRTPEVTCVVVDVSHEDPEVKFNWYVDGVEVHNAKTKPREEQYNSTYRVVSVLTVLH**  
**QDWLNGKEYKCKVSNKALPAPIEKTISKAKGQPREPQVYTLPPSRDELTKNQVSLTCLV**  
**KGFYPSDIAVEWESNGQPENNYKTPPVLDSDGSFFLYSKLTVDKSRWQQGNVFS**  
**VMHEALHNHYTQKSLSLSPGK**

Black: CD28 (a.a. 19-152)

Green: linker

Red: Fc of human IgG1 (a.a.100-330)

OUR PRODUCTS ARE FOR RESEARCH USE ONLY. NOT FOR DIAGNOSTIC OR THERAPEUTIC USE.

To place your order, please contact us by Phone **1.858.829.3082** Fax **1.858.481.8694**  
Or you can Email us at: [info@bpsbioscience.com](mailto:info@bpsbioscience.com)  
Please visit our website at: [www.bpsbioscience.com](http://www.bpsbioscience.com)