



SZABO SCANDIC

Part of Europa Biosite

Produktinformation



Forschungsprodukte & Biochemikalien



Zellkultur & Verbrauchsmaterial



Diagnostik & molekulare Diagnostik



Laborgeräte & Service

Weitere Information auf den folgenden Seiten!
See the following pages for more information!



Lieferung & Zahlungsart

siehe unsere [Liefer- und Versandbedingungen](#)

Zuschläge

- Mindermengenzuschlag
- Trockeneiszuschlag
- Gefahrgutzuschlag
- Expressversand

SZABO-SCANDIC HandelsgmbH

Quellenstraße 110, A-1100 Wien

T. +43(0)1 489 3961-0

F. +43(0)1 489 3961-7

mail@szabo-scandic.com

www.szabo-scandic.com

[linkedin.com/company/szaboscandic](https://www.linkedin.com/company/szaboscandic) 

Data Sheet

Mouse PD-1 (CD279), Fc fusion

Mouse, recombinant, C-terminal Fc fusion

Catalog #: 71116

Lot #: 150122-D

Conc.: 6.01 mg/ml

Formulated in: 8 mM phosphate, pH 7.4, 110 mM NaCl, 2.2 mM KCl, and 20% glycerol.

Stability: At least 6 months at -80°C . Avoid freeze/thaw cycles. Protein may be diluted to $\geq 100 \mu\text{g/ml}$ in PBS + glycerol and stored at -80°C .

References:

1. Agata, Y., *et al.*, *Int. Immunol.* 1996; **8(5)**: 765-772.
2. Freeman, G.J., *et al.*, *J. Exp. Med.* 2000;

Description:

Mouse secreted Programmed Cell Death 1 (PD-1)-Fc fusion protein, also known as CD279, PDCD1, and SLEB2, GenBank Accession No. NM_008798, a.a. 25-167, fused at the C-terminus to the Fc portion of mouse IgG2a, expressed in a HEK293 cell expression system. MW = 43.2 kDa. Note: this protein runs at an apparent higher molecular weight due to glycosylation.

Application:

Useful for the study of protein-protein interaction and *in vitro* and *in vivo* protein function studies.

Quality Assurance

**4-20% SDS-PAGE
Coomassie staining**

Lane 1:

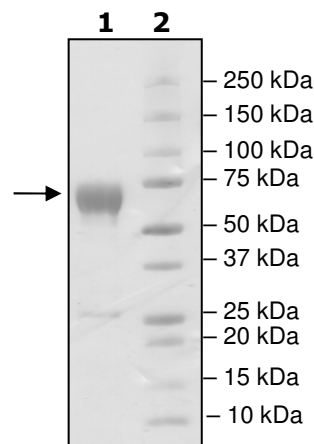
3 μg PD-1

Lane 2:

Protein Marker

MW: 43.2 kDa + glycans

Purity: $\geq 90\%$



OUR PRODUCTS ARE FOR RESEARCH USE ONLY. NOT FOR DIAGNOSTIC OR THERAPEUTIC USE.

To place your order, please contact us by Phone **1.858.829.3082** Fax **1.858.481.8694**

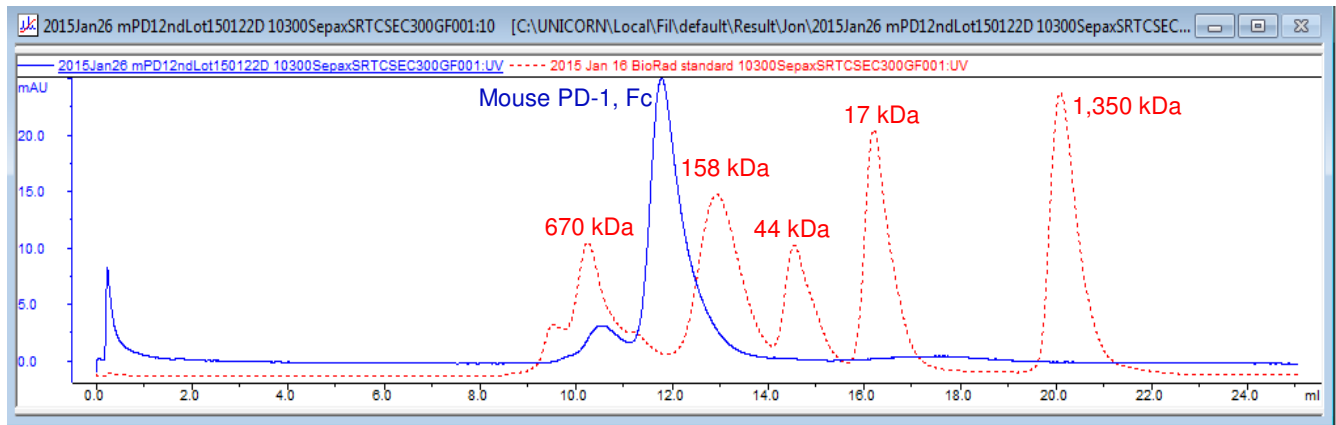
Or you can Email us at: info@bpsbioscience.com

Please visit our website at: www.bpsbioscience.com



6044 Cornerstone Court W, Ste E
San Diego, CA 92121
Tel: 1.858.829.3082
Fax: 1.858.481.8694
Email: info@bpsbioscience.com

Gel Filtration Curve



OUR PRODUCTS ARE FOR RESEARCH USE ONLY. NOT FOR DIAGNOSTIC OR THERAPEUTIC USE.

To place your order, please contact us by Phone **1.858.829.3082** Fax **1.858.481.8694**
Or you can Email us at: info@bpsbioscience.com
Please visit our website at: www.bpsbioscience.com