



# SZABO SCANDIC

Part of Europa Biosite

## Produktinformation



Forschungsprodukte & Biochemikalien



Zellkultur & Verbrauchsmaterial



Diagnostik & molekulare Diagnostik



Laborgeräte & Service

Weitere Information auf den folgenden Seiten!  
See the following pages for more information!



### Lieferung & Zahlungsart

siehe unsere [Liefer- und Versandbedingungen](#)

### Zuschläge

- Mindermengenzuschlag
- Trockeneiszuschlag
- Gefahrgutzuschlag
- Expressversand

### SZABO-SCANDIC HandelsgmbH

Quellenstraße 110, A-1100 Wien

T. +43(0)1 489 3961-0

F. +43(0)1 489 3961-7

[mail@szabo-scandic.com](mailto:mail@szabo-scandic.com)

[www.szabo-scandic.com](http://www.szabo-scandic.com)

[linkedin.com/company/szaboscandic](https://www.linkedin.com/company/szaboscandic) 

## Data Sheet

### Mouse PD-1 (CD279), Fc fusion

Mouse, recombinant, C-terminal Fc fusion

**Catalog #:** 71116

**Lot #:** 150122-D

**Conc.:** 6.01 mg/ml

**Formulated in:** 8 mM phosphate, pH 7.4, 110 mM NaCl, 2.2 mM KCl, and 20% glycerol.

**Stability:** At least 6 months at  $-80^{\circ}\text{C}$ . Avoid freeze/thaw cycles. Protein may be diluted to  $\geq 100 \mu\text{g/ml}$  in PBS + glycerol and stored at  $-80^{\circ}\text{C}$ .

**References:**

1. Agata, Y., *et al.*, *Int. Immunol.* 1996; **8(5)**: 765-772.
2. Freeman, G.J., *et al.*, *J. Exp. Med.* 2000;

**Description:**

Mouse secreted Programmed Cell Death 1 (PD-1)-Fc fusion protein, also known as CD279, PDCD1, and SLEB2, GenBank Accession No. NM\_008798, a.a. 25-167, fused at the C-terminus to the Fc portion of mouse IgG2a, expressed in a HEK293 cell expression system. MW = 43.2 kDa. Note: this protein runs at an apparent higher molecular weight due to glycosylation.

**Application:**

Useful for the study of protein-protein interaction and *in vitro* and *in vivo* protein function studies.

### Quality Assurance

**4-20% SDS-PAGE  
Coomassie staining**

**Lane 1:**

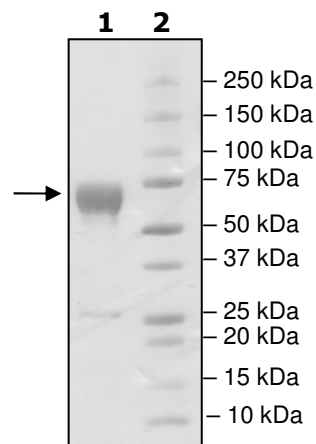
3  $\mu\text{g}$  PD-1

**Lane 2:**

Protein Marker

**MW:** 43.2 kDa + glycans

**Purity:**  $\geq 90\%$



OUR PRODUCTS ARE FOR RESEARCH USE ONLY. NOT FOR DIAGNOSTIC OR THERAPEUTIC USE.

To place your order, please contact us by Phone **1.858.829.3082** Fax **1.858.481.8694**

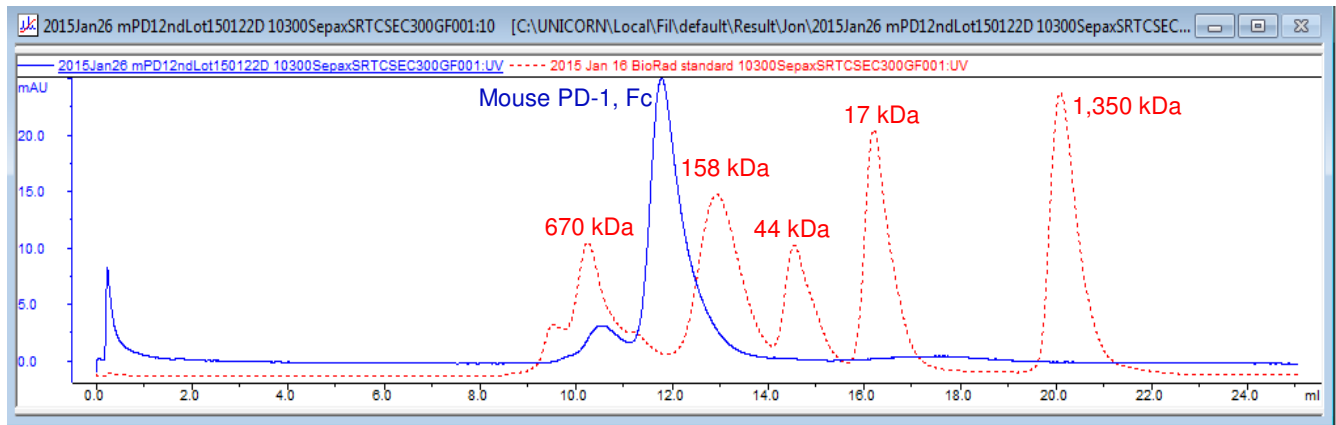
Or you can Email us at: [info@bpsbioscience.com](mailto:info@bpsbioscience.com)

Please visit our website at: [www.bpsbioscience.com](http://www.bpsbioscience.com)



6044 Cornerstone Court W, Ste E  
San Diego, CA 92121  
Tel: 1.858.829.3082  
Fax: 1.858.481.8694  
Email: info@bpsbioscience.com

### Gel Filtration Curve



OUR PRODUCTS ARE FOR RESEARCH USE ONLY. NOT FOR DIAGNOSTIC OR THERAPEUTIC USE.

To place your order, please contact us by Phone **1.858.829.3082** Fax **1.858.481.8694**  
Or you can Email us at: [info@bpsbioscience.com](mailto:info@bpsbioscience.com)  
Please visit our website at: [www.bpsbioscience.com](http://www.bpsbioscience.com)