



# SZABO SCANDIC

Part of Europa Biosite

## Produktinformation



Forschungsprodukte & Biochemikalien



Zellkultur & Verbrauchsmaterial



Diagnostik & molekulare Diagnostik



Laborgeräte & Service

Weitere Information auf den folgenden Seiten!  
See the following pages for more information!



### Lieferung & Zahlungsart

siehe unsere [Liefer- und Versandbedingungen](#)

### Zuschläge

- Mindermengenzuschlag
- Trockeneiszuschlag
- Gefahrgutzuschlag
- Expressversand

### SZABO-SCANDIC HandelsgmbH

Quellenstraße 110, A-1100 Wien

T. +43(0)1 489 3961-0

F. +43(0)1 489 3961-7

[mail@szabo-scandic.com](mailto:mail@szabo-scandic.com)

[www.szabo-scandic.com](http://www.szabo-scandic.com)

[linkedin.com/company/szaboscandic](https://www.linkedin.com/company/szaboscandic) 

## Data Sheet

### CD44, Fc fusion, Biotin-labeled

Human, recombinant, Fc fusion, biotin labeled

**Catalog #:** 71133

**Lot #:** 150312

**Conc.:** 2.84 mg/ml

**Formulated in:** 8 mM Phosphate, pH 7.4, 110 mM NaCl, 2.2 mM KCl, and 20% glycerol

**Stability:** At least 6 months at  $-80^{\circ}\text{C}$ . Avoid freeze/thaw cycles. Protein may be diluted to  $\geq 100 \mu\text{g/ml}$  in PBS + glycerol and stored at  $-80^{\circ}\text{C}$ .

**References:**

1. Aruffo, A., *et al.*, *Cell*. 1990; **61(7)**: 1303-1313.
2. Sreaton, G.R., *et al.*, *Proc. Natl. Acad. Sci. (USA)*. 1992; **89(24)**: 12160-12164.

**Description:**

Human secreted CD44, also known as epican, extracellular matrix receptor III, GP90 lymphocyte homing/adhesion receptor, HUTCH-I, or phagocytic glycoprotein I (PGP-1), GenBank Accession No. NM\_000610, a.a. 21-220 expressed in a HEK293 cell expression system, fused at the C-terminus to the Fc portion of human IgG1, and enzymatically biotin-labeled using Avi-tag™ technology. MW = 50.6 kDa (monomer). This protein runs at a higher M.W. by SDS-PAGE due to glycosylation.

**Application:**

Useful for the study of enzyme kinetics, screening inhibitors, and selectivity profiling.

### Quality Assurance

**4-20% SDS-PAGE  
 Coomassie staining**

**Lane 1:**

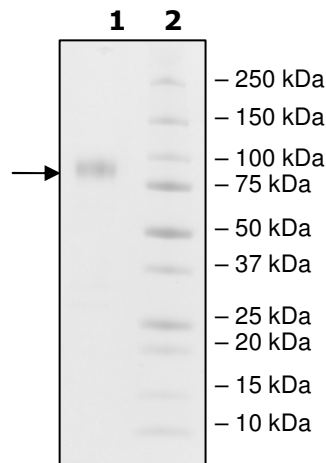
3  $\mu\text{g}$  CD44

**Lane 2:**

Protein Marker

**MW:** 50.6 kDa+glycans

**Purity:**  $\geq 90\%$



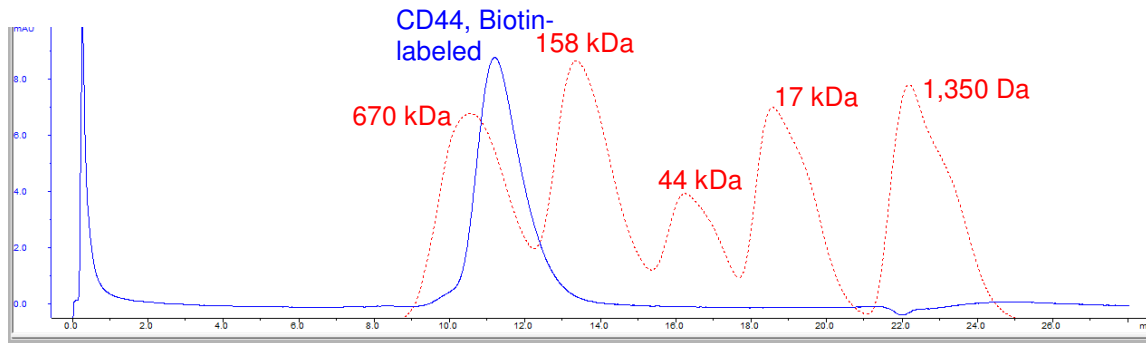
OUR PRODUCTS ARE FOR RESEARCH USE ONLY. NOT FOR DIAGNOSTIC OR THERAPEUTIC USE.

To place your order, please contact us by Phone **1.858.829.3082** Fax **1.858.481.8694**

Or you can Email us at: [info@bpsbioscience.com](mailto:info@bpsbioscience.com)

Please visit our website at: [www.bpsbioscience.com](http://www.bpsbioscience.com)

**Gel Filtration Curve**



**Sequence**

**QIDLNITCRFAGVFHVEKNGRYSISRTEAADLCKAFNSTLPTMAQMEKALSIGFETCRY**  
**GFIEGHVVIPRIHPNSICAANNTGVYILTSNTSQYDYCFNASAPPEEDCTSVTDLPNAF**  
**DGPITITIVNRDGTTRYVQKGEYRTNPEDIYPSNPTDDDVS****SGSSERSSTSGGYIFYTFS**  
**TVHPIPEDSPWITDSTDRIPIEGRMDPKSCDKTHTCPPCPAPELLGGPSVFLFPPKPK**  
**DTLMISRTPEVTCVVVDVSHEDPEVKFNWYVDGVEVHNAKTKPREEQYNSTYRVVSVL**  
**TVLHQDWLNGKEYKCKVSNKALPAPIEKTISKAKGQPREPQVYTLPPSRDELTKNQVSL**  
**TCLVKGFYPSDIAVEWESNGQPENNYKTTTPVLDSDGSFFLYSKLTVDKSRWQQGNV**  
**FSCSVMHEALHNHYTQKSLSLSPGKGGGLNDIFEAQKIEWHE**

Black: CD44 (a.a. 21-220)  
 Green: linker  
 Red: Fc of human IgG1 (a.a. 100-330)  
 Blue: Avi-tag™ sequence

OUR PRODUCTS ARE FOR RESEARCH USE ONLY. NOT FOR DIAGNOSTIC OR THERAPEUTIC USE.

To place your order, please contact us by Phone **1.858.829.3082** Fax **1.858.481.8694**  
 Or you can Email us at: [info@bpsbioscience.com](mailto:info@bpsbioscience.com)  
 Please visit our website at: [www.bpsbioscience.com](http://www.bpsbioscience.com)