



SZABO SCANDIC

Part of Europa Biosite

Produktinformation



Forschungsprodukte & Biochemikalien



Zellkultur & Verbrauchsmaterial



Diagnostik & molekulare Diagnostik



Laborgeräte & Service

Weitere Information auf den folgenden Seiten!
See the following pages for more information!



Lieferung & Zahlungsart

siehe unsere [Liefer- und Versandbedingungen](#)

Zuschläge

- Mindermengenzuschlag
- Trockeneiszuschlag
- Gefahrgutzuschlag
- Expressversand

SZABO-SCANDIC HandelsgmbH

Quellenstraße 110, A-1100 Wien

T. +43(0)1 489 3961-0

F. +43(0)1 489 3961-7

mail@szabo-scandic.com

www.szabo-scandic.com

[linkedin.com/company/szaboscandic](https://www.linkedin.com/company/szaboscandic) 

Data Sheet

CD160, His-tag, Biotin-labeled

Human, recombinant, His-tag, biotin labeled

Catalog #: 71135

Lot #: 150317

Conc.: 0.86 mg/ml

Formulated in: 8 mM Phosphate, pH 7.4, 110 mM NaCl, 2.2 mM KCl, and 20% glycerol

Stability: At least 6 months at -80°C . Avoid freeze/thaw cycles. Protein may be diluted to $\geq 100 \mu\text{g/ml}$ in PBS + glycerol and stored at -80°C .

References:

1. Cai, G., *et al.*, *Nat. Immunol.* 2008; **9**: *Immunol.* 2008; **9**: 176-185.
2. Le Bouteiller, P. *et al.*, *Proc. Nat. Acad. Sci. USA* 2002; **99(26)**: 16963- 16968.

Description:

Human CD160, also known as Natural killer cell receptor BY55, GenBank Accession No. NM_007053, a.a. 27-159 expressed in a HEK293 cell expression system, with a C-terminal His-tag and enzymatically biotin-labeled using Avi-tag™ technology. MW = 17.5 kDa. This protein runs at a higher MW by SDS-PAGE due to glycosylation.

Application:

Useful for the study of protein-protein interaction and in vitro and in vivo protein function studies.

Quality Assurance

4-20% SDS-PAGE Coomassie staining

Lane 1:

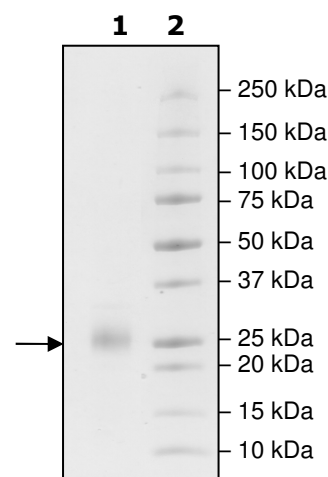
2 μg CD160

Lane 2:

Protein Marker

MW: 17.5 kDa + glycans

Purity: $\geq 90\%$



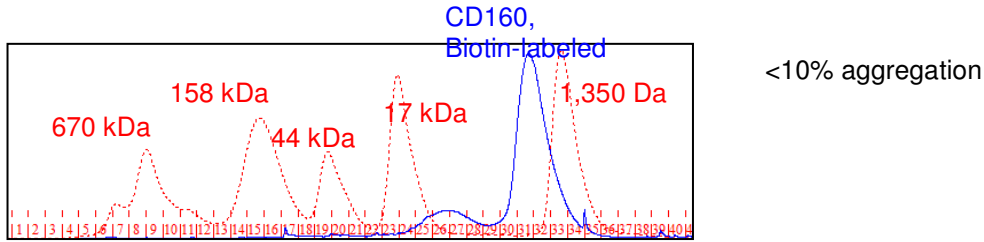
OUR PRODUCTS ARE FOR RESEARCH USE ONLY. NOT FOR DIAGNOSTIC OR THERAPEUTIC USE.

To place your order, please contact us by Phone **1.858.829.3082** Fax **1.858.481.8694**

Or you can Email us at: info@bpsbioscience.com

Please visit our website at: www.bpsbioscience.com

Gel Filtration Curve



Note: CD160 binds to the column and runs at a lower apparent MW by FPLC

Sequence

**INITSSASQEGTRLNLICTVWHKKEEAEGFVVFLCKDRSGDCSPETSLKQLRLKRDPGI
 DGVGEISSQLMFTISQVTPLHSGTYQCCARSQKSGIRLQGHFFSILFTETGNYTVTGLK
 QRQHLEFSHNEGTL****HHHHHHGGGLNDIFEAQKIEWHE**

Black: CD160 (a.a. 27-159)

Purple: 6x His

Blue: Avi

OUR PRODUCTS ARE FOR RESEARCH USE ONLY. NOT FOR DIAGNOSTIC OR THERAPEUTIC USE.

To place your order, please contact us by Phone **1.858.829.3082** Fax **1.858.481.8694**
 Or you can Email us at: info@bpsbioscience.com
 Please visit our website at: www.bpsbioscience.com