



# SZABO SCANDIC

Part of Europa Biosite

## Produktinformation



Forschungsprodukte & Biochemikalien



Zellkultur & Verbrauchsmaterial



Diagnostik & molekulare Diagnostik



Laborgeräte & Service

Weitere Information auf den folgenden Seiten!  
See the following pages for more information!



### Lieferung & Zahlungsart

siehe unsere [Liefer- und Versandbedingungen](#)

### Zuschläge

- Mindermengenzuschlag
- Trockeneiszuschlag
- Gefahrgutzuschlag
- Expressversand

### SZABO-SCANDIC HandelsgmbH

Quellenstraße 110, A-1100 Wien

T. +43(0)1 489 3961-0

F. +43(0)1 489 3961-7

[mail@szabo-scandic.com](mailto:mail@szabo-scandic.com)

[www.szabo-scandic.com](http://www.szabo-scandic.com)

[linkedin.com/company/szaboscandic](https://www.linkedin.com/company/szaboscandic) 

## Data Sheet

### **BTLA(CD272), Fc Fusion**

Human, recombinant, Fc fusion protein

**Catalog #:** 71141

**Lot #:** 151201 **Conc.:** 1.03 mg/ml

**Formulated in:** 40 mM Tris-HCl, pH 8.0,  
110 mM NaCl, 2.2 mM KCl, and 20%  
glycerol

**Endotoxin Level:** <0.1 EU/ug

**Stability:** At least 6 months at  $-80^{\circ}\text{C}$ . Avoid  
freeze/thaw cycles. Protein may be diluted to  
 $\geq 100 \mu\text{g/ml}$  in PBS + glycerol and stored at  
 $-80^{\circ}\text{C}$ .

#### References:

1. Flynn R, *et al.*, PLoS One. 2013 Oct  
29;**8(10)**:77991.
2. Uchiyama M, *et al.*, *Transplantaion*.  
2014 Feb 15;**97(3)**:301-9.

#### Description:

Human B- and T-lymphocyte attenuator (BTLA)-Fc fusion protein, also known as CD272, GenBank Accession No. NM\_181780, a.a. 31-150, expressed in a HEK293 cell expression system. MW = 40.3 kDa (monomer). This protein runs at a higher apparent M.W. by SDS-PAGE due to glycosylation.

#### Application:

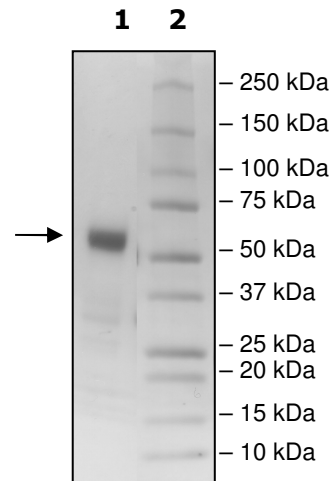
Useful for the study of protein-protein interaction and in vitro and in vivo protein function studies.

## **Quality Assurance**

### 4-20% SDS-PAGE Coomassie staining

**Lane 1:**  
3 $\mu\text{g}$ BTLA  
**Lane 2:**  
Protein Marker

**MW:**40.3 kDa  
**Purity:**  $\geq 90\%$



OUR PRODUCTS ARE FOR RESEARCH USE ONLY. NOT FOR DIAGNOSTIC OR THERAPEUTIC USE.

To place your order, please contact us by Phone **1.858.829.3082** Fax **1.858.481.8694**

Or you can Email us at: [info@bpsbioscience.com](mailto:info@bpsbioscience.com)

Please visit our website at: [www.bpsbioscience.com](http://www.bpsbioscience.com)



6044 Cornerstone Court W, Ste E  
San Diego, CA 92121  
**Tel:** 1.858.829.3082  
**Fax:** 1.858.481.8694  
**Email:** [info@bpsbioscience.com](mailto:info@bpsbioscience.com)

**Sequence:**

KESCDVQLYIKRQSEHSILAGDPFELECPVKYCANRPHVTWCKLNGTTCVKLEDRQTS  
WKEEKNISFFILHFEPVLPNDNGSYRCSANFQSNLIESHSTTLYVTDVKSASERPSKDE  
MASIEGRMDPKSCDKTHTCPPCPAPELLGGPSVFLFPPKPKDTLMISRTPEVTCVVVDV  
SHEDPEVKFNWYVDGVEVHNAKTKPREEQYNSTYRVVSVLTVLHQDWLNGKEYKCKV  
SNKALPAPIEKTISKAKGQPREPQVYTLPPSRDELTKNQVSLTCLVKGFYPSDIAVEWES  
NGQPENNYKTTTPVLDSDGSFFLYSKLTVDKSRWQQGNVFCFSVMHEALHNHYTQKS  
LSLSPGK

Black: BTLA (a.a. 31-150)

Green: linker

Red: Fc of human IgG1 (a.a. 100-330)

OUR PRODUCTS ARE FOR RESEARCH USE ONLY. NOT FOR DIAGNOSTIC OR THERAPEUTIC USE.

To place your order, please contact us by Phone **1.858.829.3082** Fax **1.858.481.8694**

Or you can Email us at: [info@bpsbioscience.com](mailto:info@bpsbioscience.com)

Please visit our website at: [www.bpsbioscience.com](http://www.bpsbioscience.com)