



# SZABO SCANDIC

Part of Europa Biosite

## Produktinformation



Forschungsprodukte & Biochemikalien



Zellkultur & Verbrauchsmaterial



Diagnostik & molekulare Diagnostik



Laborgeräte & Service

Weitere Information auf den folgenden Seiten!  
See the following pages for more information!



### Lieferung & Zahlungsart

siehe unsere [Liefer- und Versandbedingungen](#)

### Zuschläge

- Mindermengenzuschlag
- Trockeneiszuschlag
- Gefahrgutzuschlag
- Expressversand

### SZABO-SCANDIC HandelsgmbH

Quellenstraße 110, A-1100 Wien

T. +43(0)1 489 3961-0

F. +43(0)1 489 3961-7

[mail@szabo-scandic.com](mailto:mail@szabo-scandic.com)

[www.szabo-scandic.com](http://www.szabo-scandic.com)

[linkedin.com/company/szaboscandic](https://www.linkedin.com/company/szaboscandic) 

## Data Sheet

### CTLA4 (CD152), Fc fusion, Biotin-labeled

Human, Recombinant, Fc fusion, C-terminal biotin-tag

**Catalog #:** 71152-2

**Lot #:** 160711-G      **Conc.:** 0.47 mg/ml

**Formulated in:** 8 mM Phosphate, pH 7.4, 110 mM NaCl, 2.2 mM KCl, and 20% glycerol

**Stability:** At least 6 months at  $-80^{\circ}\text{C}$ . Avoid freeze/thaw cycles. Protein may be diluted to  $\geq 100 \mu\text{g/ml}$  in PBS + glycerol and stored at  $-80^{\circ}\text{C}$ .

**References:**

1. Dilek, N., *et al.*, *PLOS ONE*. 2013 Dec. 23; **8(12):**e83139.
2. Leach, D.R., *et al.*, *Science*. 1996; **271(5256):**1734-1736.

**Description:** Human secreted CTLA4, Fc fusion protein, also known as Cytotoxic T-lymphocyte-associated protein 4 and CD152. GenBank Accession No. NM\_005214, a.a. 36-162, fused at the C-terminus to the Fc portion of human IgG1 and with a C-terminal Avi-tag, expressed in a HEK293 cell expression system. This protein was biotinylated using AviTag™ technology. MW = 42 kDa (monomer). Note: This protein runs at a higher MW by SDS-PAGE due to glycosylation.

**Application:** Useful for studying protein binding and screening small molecules.

---

### Quality Assurance

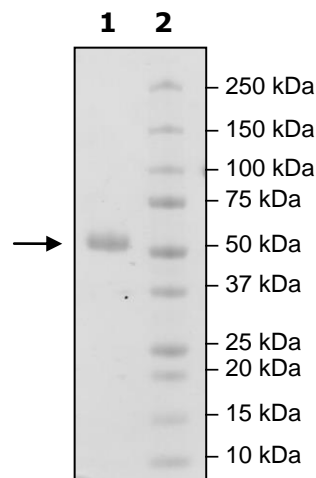
**4-20% SDS-PAGE  
 Coomassie staining**

**Lane 1:**  
 3 $\mu\text{g}$ CTLA4

**Lane 2:**  
 Protein Marker

**MW:** 42 kDa +glycans

**Purity:**  $\geq 90\%$



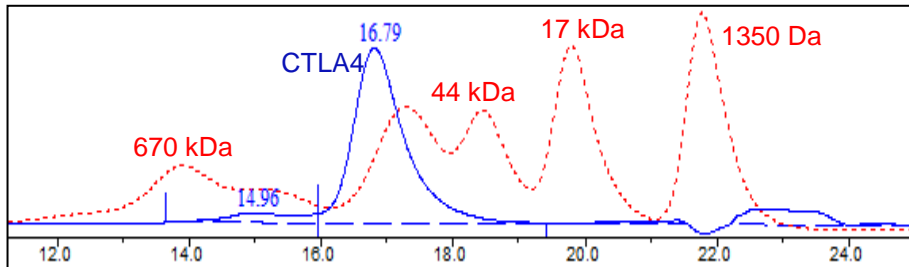
OUR PRODUCTS ARE FOR RESEARCH USE ONLY. NOT FOR DIAGNOSTIC OR THERAPEUTIC USE.

To place your order, please contact us by Phone **1.858.829.3082** Fax **1.858.481.8694**  
 Or you can Email us at: [info@bpsbioscience.com](mailto:info@bpsbioscience.com)  
 Please visit our website at: [www.bpsbioscience.com](http://www.bpsbioscience.com)



6042 Cornerstone Court W, Ste B  
San Diego, CA 92121  
**Tel:** 1.858.829.3082  
**Fax:** 1.858.481.8694  
**Email:** info@bpsbioscience.com

**Gel Filtration Curve:**



<10 % Aggregation

OUR PRODUCTS ARE FOR RESEARCH USE ONLY. NOT FOR DIAGNOSTIC OR THERAPEUTIC USE.

To place your order, please contact us by Phone **1.858.829.3082** Fax **1.858.481.8694**  
Or you can Email us at: [info@bpsbioscience.com](mailto:info@bpsbioscience.com)  
Please visit our website at: [www.bpsbioscience.com](http://www.bpsbioscience.com)