



SZABO SCANDIC

Part of Europa Biosite

Produktinformation



Forschungsprodukte & Biochemikalien



Zellkultur & Verbrauchsmaterial



Diagnostik & molekulare Diagnostik



Laborgeräte & Service

Weitere Information auf den folgenden Seiten!
See the following pages for more information!



Lieferung & Zahlungsart

siehe unsere [Liefer- und Versandbedingungen](#)

Zuschläge

- Mindermengenzuschlag
- Trockeneiszuschlag
- Gefahrgutzuschlag
- Expressversand

SZABO-SCANDIC HandelsgmbH

Quellenstraße 110, A-1100 Wien

T. +43(0)1 489 3961-0

F. +43(0)1 489 3961-7

mail@szabo-scandic.com

www.szabo-scandic.com

[linkedin.com/company/szaboscandic](https://www.linkedin.com/company/szaboscandic) 

Data Sheet

CD160, His-Tag, HiP™

Human, Recombinant with C-terminal His-tag

Catalog #: 71173

Lot #: 140514-D **Conc.:** 3.03 mg/ml

Formulated in: 8 mM phosphate, pH 7.4, 110 mM NaCl, 2.2 mM KCl, and 20% glycerol.

Stability: At least 6 months at -80°C . Avoid freeze/thaw cycles.

Endotoxin Level: <1 EU/ μg

References:

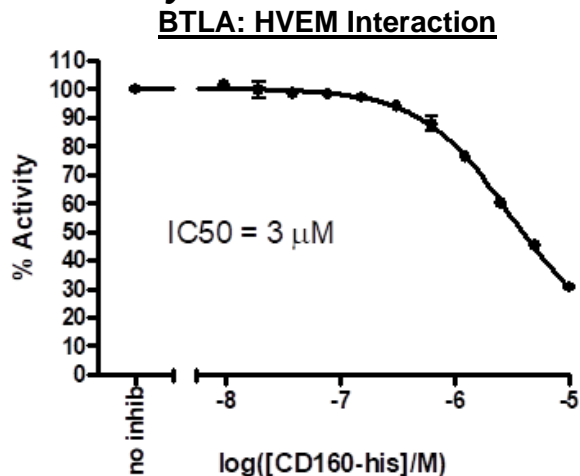
1. Cai, G., *et al.*, *Nat. Immunol.* 2008; **9**: 176-185.
2. Le Bouteiller, P. *et al.*, *Proc. Nat. Acad. Sci. USA* 2002; **99(26)**: 16963-16968.

Description: Human secreted CD160, also known as Natural killer cell receptor BY55, GenBank Accession No. NM_007053, a.a. 27-159 with C-terminal His-tag, expressed in a HEK293 cell expression system. MW = 15.6 kDa (monomer). This protein runs at a higher MW by SDS-PAGE due to glycosylation.

Assay Conditions: Used the BTLA:HVEM[Biotinylated] Inhibitor Screening Assay Kit (BPS Bioscience, #72008). Briefly, coated plate with 100 ng/well of BTLA in 50 μl (overnight at 4 deg). Added various concentrations of either CD160 (0-10 μM) or HVEM-Fc (0-3 μM) CD137-biotin. Initiated binding assay with addition of 100 ng/well HVEM-Fc-biotin. Incubated for 2h at RT. Detected binding with Strep-HRP generated luminescence.

Application: Useful for studying protein binding and screening small molecules.

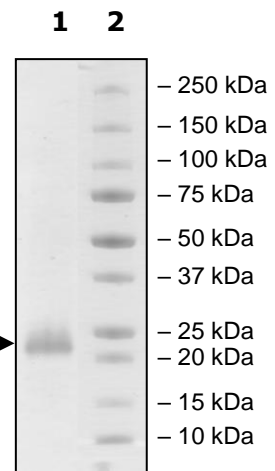
Quality Assurance



**4-20% SDS-PAGE
Coomassie staining**

Lane 1:
3 μg CD160
Lane 2:
Protein Marker

MW: 16 kDa + glycans
Purity: $\geq 90\%$



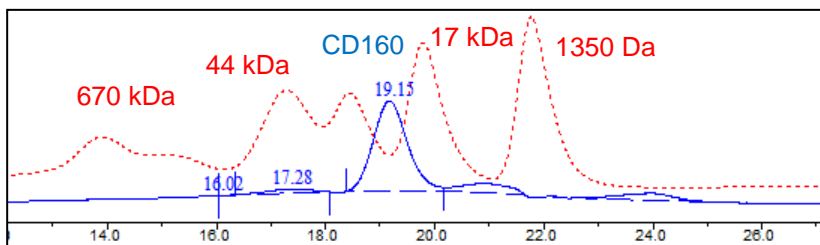
OUR PRODUCTS ARE FOR RESEARCH USE ONLY. NOT FOR DIAGNOSTIC OR THERAPEUTIC USE.

To place your order, please contact us by Phone **1.858.202.1401** Fax **1.858.481.8694**
 Or you can Email us at: info@bpsbioscience.com
 Please visit our website at: www.bpsbioscience.com



6042 Cornerstone Court W, Ste B
San Diego, CA 92121
Tel: 1.858.202.1401
Fax: 1.858.481.8694
Email: info@bpsbioscience.com

Gel Filtration Curve



<10% Aggregation

OUR PRODUCTS ARE FOR RESEARCH USE ONLY. NOT FOR DIAGNOSTIC OR THERAPEUTIC USE.

To place your order, please contact us by Phone **1.858.202.1401** Fax **1.858.481.8694**
Or you can Email us at: info@bpsbioscience.com
Please visit our website at: www.bpsbioscience.com