



SZABO SCANDIC

Part of Europa Biosite

Produktinformation



Forschungsprodukte & Biochemikalien



Zellkultur & Verbrauchsmaterial



Diagnostik & molekulare Diagnostik



Laborgeräte & Service

Weitere Information auf den folgenden Seiten!
See the following pages for more information!



Lieferung & Zahlungsart

siehe unsere [Liefer- und Versandbedingungen](#)

Zuschläge

- Mindermengenzuschlag
- Trockeneiszuschlag
- Gefahrgutzuschlag
- Expressversand

SZABO-SCANDIC HandelsgmbH

Quellenstraße 110, A-1100 Wien

T. +43(0)1 489 3961-0

F. +43(0)1 489 3961-7

mail@szabo-scandic.com

www.szabo-scandic.com

[linkedin.com/company/szaboscandic](https://www.linkedin.com/company/szaboscandic) 

Data Sheet

CD47, Fc Fusion (IgG1)

Human, Recombinant, C-terminal
Fc fusion protein

Catalog #: 71177

Lot#: 190409 **Conc.:** 1.67 mg/ml

Formulated in: 8 mM Phosphate, pH 7.4,
110 mM NaCl, 2.2 mM KCl, and 20%
glycerol.

Stability: At least 6 months at -80°C . Avoid
freeze/thaw cycles.

References:

1. Vernon-Wilson, E.F. *et al.*, *Eur. J. Immunol.* 2000; **30(8)**: 2130-2137.
2. Majeti, R. *et al.*, *Cell.* 2009; **138(2)**: 286-299.

Description: Human CD47, Fc fusion protein, also known as leukocyte surface antigen CD47, Rh-related antigen, integrin-associated protein, antigenic surface determinant protein OA3, antigen identified by monoclonal antibody 1D8, and MER6. GenBank Accession No. NM_001777, a.a. 19-139 fused at the C-terminus to the Fc portion of human IgG1, expressed in a HEK293 cell expression system. MW = 40 kDa. This protein runs at a higher MW by SDS-PAGE due to glycosylation.

Quality Assurance

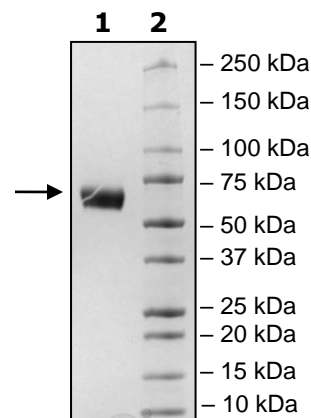
4-20% SDS-PAGE **Coomassie staining**

Lane 1:
4 μg CD47

Lane 2:
Protein Marker

MW: 40 kDa + glycans

Purity: $\geq 90\%$



OUR PRODUCTS ARE FOR RESEARCH USE ONLY. NOT FOR DIAGNOSTIC OR THERAPEUTIC USE.

To place your order, please contact us by Phone **1.858.202.1401** Fax **1.858.481.8694**

Or you can Email us at: info@bpsbioscience.com

Please visit our website at: www.bpsbioscience.com