



SZABO SCANDIC

Part of Europa Biosite

Produktinformation



Forschungsprodukte & Biochemikalien



Zellkultur & Verbrauchsmaterial



Diagnostik & molekulare Diagnostik



Laborgeräte & Service

Weitere Information auf den folgenden Seiten!
See the following pages for more information!



Lieferung & Zahlungsart

siehe unsere [Liefer- und Versandbedingungen](#)

Zuschläge

- Mindermengenzuschlag
- Trockeneiszuschlag
- Gefahrgutzuschlag
- Expressversand

SZABO-SCANDIC HandelsgmbH

Quellenstraße 110, A-1100 Wien

T. +43(0)1 489 3961-0

F. +43(0)1 489 3961-7

mail@szabo-scandic.com

www.szabo-scandic.com

[linkedin.com/company/szaboscandic](https://www.linkedin.com/company/szaboscandic) 

Data Sheet

Mouse IDO1, His-tag

Human, recombinant, N-terminal His-tag

Catalog #: 71196

Lot #: 150521

Conc.: 3.70 mg/ml

Formulated in: 40 mM Tris-HCl, pH 8.0, 110 mM NaCl, 2.2 mM KCl, and 20% glycerol

Stability: At least 6 months at -80°C . Avoid freeze/thaw cycles. Storing diluted protein is not recommended, if necessary, use carrier protein (BSA 0.1 – 0.5%).

References:

1. Lob, S. *et al.*, *Cancer Immunol. Immunother.* 2009; **58(1)**: 153-157.
2. Liu, X. *et al.*, *Blood.* 2010; **115(17)**: 3520-3530.
3. Flick, H.E., *et al.*, *Int. Nat. J. Tryptophan Res.* 2013; **6**: 35-45.

Description:

Mouse IDO1, also known as Indoleamine 2,3-dioxygenase 1, GenBank Accession No. NM_008324, a.a. 2-407(end) with an N-terminal His-tag, expressed in the presence of hemin in an *E. coli* cell expression system. MW = 46 kDa.

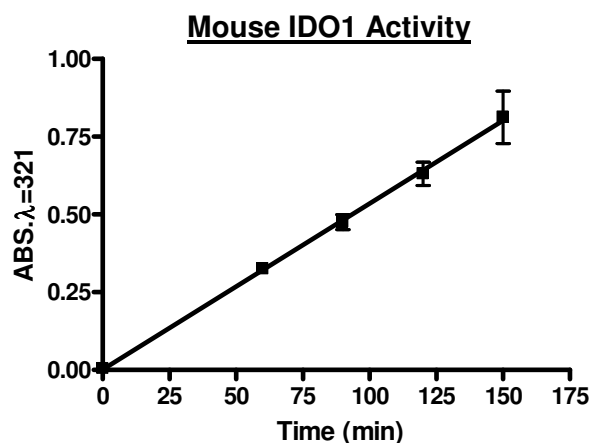
Activity:

Assay Conditions: Assay was performed in 20 mM ascorbate, 10 mM methylene blue, 10 $\mu\text{g/ml}$ catalase, 100 μM NaPi, pH 6.5 containing varying concentrations of tryptophan. 300 ng of IDO1 was added to initiate reaction and aliquots were collected at various time points for Kyn analysis.

Application:

Useful for studying enzyme kinetics, substrate specificity, and screening inhibitors.

Quality Assurance

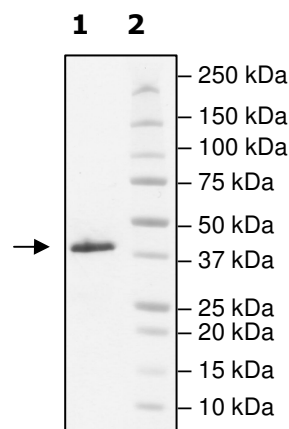


**4-20% SDS-PAGE
Coomassie staining**

Lane 1:
2 μg Mouse IDO1

Lane 2:
Protein Marker

Purity: $\geq 95\%$
MW: 46 kDa



OUR PRODUCTS ARE FOR RESEARCH USE ONLY. NOT FOR DIAGNOSTIC OR THERAPEUTIC USE.

To place your order, please contact us by Phone **1.858.829.3082** Fax **1.858.481.8694**

Or you can Email us at: info@bpsbioscience.com

Please visit our website at: www.bpsbioscience.com