



# SZABO SCANDIC

Part of Europa Biosite

## Produktinformation



Forschungsprodukte & Biochemikalien



Zellkultur & Verbrauchsmaterial



Diagnostik & molekulare Diagnostik



Laborgeräte & Service

Weitere Information auf den folgenden Seiten!  
See the following pages for more information!



### Lieferung & Zahlungsart

siehe unsere [Liefer- und Versandbedingungen](#)

### Zuschläge

- Mindermengenzuschlag
- Trockeneiszuschlag
- Gefahrgutzuschlag
- Expressversand

### SZABO-SCANDIC HandelsgmbH

Quellenstraße 110, A-1100 Wien

T. +43(0)1 489 3961-0

F. +43(0)1 489 3961-7

[mail@szabo-scandic.com](mailto:mail@szabo-scandic.com)

[www.szabo-scandic.com](http://www.szabo-scandic.com)

[linkedin.com/company/szaboscandic](https://www.linkedin.com/company/szaboscandic) 

## Data Sheet

### PFKFB4

Human, recombinant, N-terminal His-tag

**Catalog #:** 71199

**Lot #:** 141209

**Conc.:** 1.77 mg/ml

**Formulated in:** 40 mM Tris-HCl, pH 8.0, 110 mM NaCl, 2.2 mM KCl, 0.04% Tween-20, 200 mM imidazole and 20% glycerol.

**Stability:** At least 6 months at  $-80^{\circ}\text{C}$ . Avoid freeze/thaw cycles. Storing diluted enzyme is not recommended, if necessary, use carrier protein (BSA 0.1 – 0.5%).

**References:**

1. Minchenko, O.H., *et al.*, *Acta Biochimica Polonica*. 2005; **52(4)**: 881-888.
2. Goidts, V., *et al.*, *Oncogene*. 2012; **31**: 3235-3243.

**Description:** Human recombinant 6-phosphofructo-2-kinase/fructose-2,6-bisphosphatase 4 (PFKFB4), also known as 6PF-2-K/Fru-2,6-P2ase 4, and PFK/FBpase 4, a.a. 2-469 with an N-terminal His-tag, GenBank Accession No. NM\_004567/NM\_004558, MW = 55 kDa, expressed in an *E. coli* cell expression system.

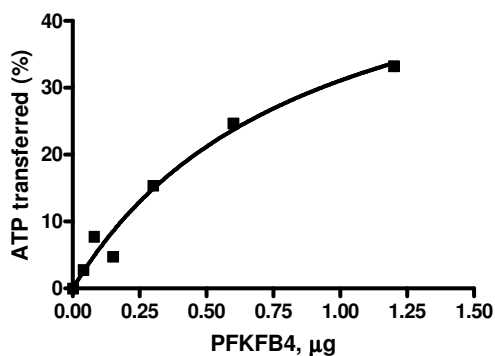
**Specific Activity:** 16 pmol/min/ $\mu\text{g}$

**Assay Conditions:** The reaction mixture contained 50 mM Tris-HCl, pH 7.5, 12.5 mM  $\text{MgCl}_2$ , 1 mM  $\beta$ -D-fructose-6-phosphate, 20  $\mu\text{M}$  ATP, 2 mM DTT, 5 mM  $\text{KH}_2\text{PO}_4$ , and various amounts of PFKFB4 in a final volume of 50  $\mu\text{L}$ . The reaction was incubated at  $30^{\circ}\text{C}$  for 30 min, the amount of ATP consumed was calculated using kinase-glo plus reagent (Promega).

**Application:** Useful for the study of enzyme kinetics, screening inhibitors, and selectivity profiling.

## Quality Assurance

**Specific Activity**

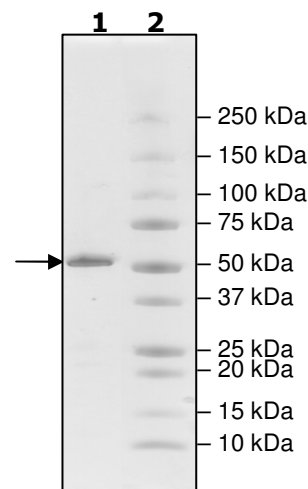


**4-20% SDS-PAGE  
Coomassie staining**

**Lane 1:**  
2  $\mu\text{g}$  PFKFB4

**Lane 2:**  
Protein Marker

**MW:** 55 kDa  
**Purity:**  $\geq 90\%$



OUR PRODUCTS ARE FOR RESEARCH USE ONLY. NOT FOR DIAGNOSTIC OR THERAPEUTIC USE.

To place your order, please contact us by Phone **1.858.829.3082** Fax **1.858.481.8694**

Or you can Email us at: [info@bpsbioscience.com](mailto:info@bpsbioscience.com)

Please visit our website at: [www.bpsbioscience.com](http://www.bpsbioscience.com)