



# SZABO SCANDIC

Part of Europa Biosite

## Produktinformation



Forschungsprodukte & Biochemikalien



Zellkultur & Verbrauchsmaterial



Diagnostik & molekulare Diagnostik



Laborgeräte & Service

Weitere Information auf den folgenden Seiten!  
See the following pages for more information!



### Lieferung & Zahlungsart

siehe unsere [Liefer- und Versandbedingungen](#)

### Zuschläge

- Mindermengenzuschlag
- Trockeneiszuschlag
- Gefahrgutzuschlag
- Expressversand

### SZABO-SCANDIC HandelsgmbH

Quellenstraße 110, A-1100 Wien

T. +43(0)1 489 3961-0

F. +43(0)1 489 3961-7

[mail@szabo-scandic.com](mailto:mail@szabo-scandic.com)

[www.szabo-scandic.com](http://www.szabo-scandic.com)

[linkedin.com/company/szaboscandic](https://www.linkedin.com/company/szaboscandic) 

## Data Sheet

### GLS2, His-tag

Human, Recombinant, C-terminal His-tag

**Catalog #:** 71242

**Lot #:** 200109-1

**Conc.:** 0.12 mg/ml

**Formulated in:** 40 mM Tris-HCl pH 8.0, 110 mM NaCl, 2.2 mM KCl, 0.04% Tween-20, 20% glycerol, variable Imidazole.

**Stability:** At least 6 months at  $-80^{\circ}\text{C}$ . Avoid freeze/thaw cycles.

**References:**

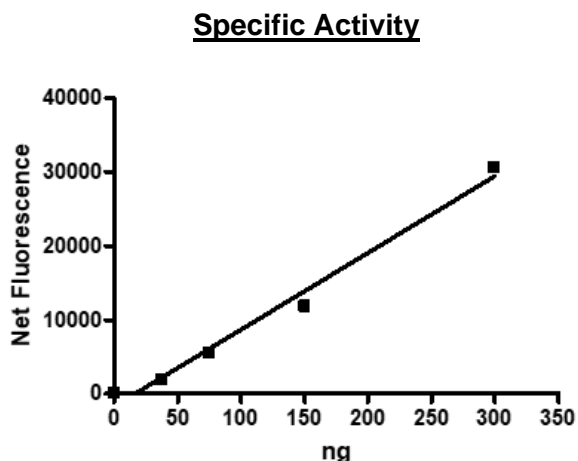
1. Gross, M.I. *et al.*, *Mol. Cancer Ther.* 2014; **13**: 890.
2. Szeliga, M. *et al.*, *Tumor. Biol.* 2014; **35**: 1855-1862.

**Description:** Human glutaminase liver isoform (liver, mitochondria), also known as GLS2, L-glutaminase, and L-glutaminase amidohydrolase, GenBank Accession No. NM\_013267, a.a. 15-602(end), with C-terminal His-tag, expressed in an *E. coli* cell expression system, MW=66 kDa .

**Assay Conditions:** Assay was performed according to BPS catalog #79596 with a modified incubation time of 10 minutes and GLS2 titrated from 300 ng/rxn – 0 ng/rxn.

**Applications:** Useful for the study of enzyme kinetics and for inhibitor screening.

## Quality Assurance

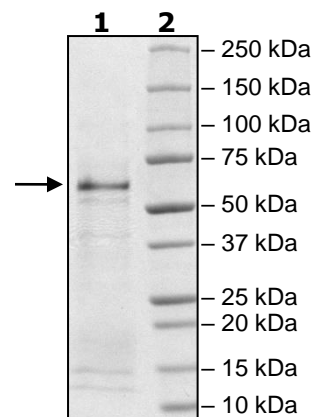


**4-20% SDS-PAGE  
Coomassie staining**

**Lane 1:**  
2 $\mu\text{g}$  GLS2  
**Lane 2:**  
Protein Marker

**MW:** 66 kDa

**Purity:**  $\geq 75\%$



OUR PRODUCTS ARE FOR RESEARCH USE ONLY. NOT FOR DIAGNOSTIC OR THERAPEUTIC USE.

To place your order, please contact us by Phone **1.858.202.1401** Fax **1.858.481.8694**

Or you can Email us at: [info@bpsbioscience.com](mailto:info@bpsbioscience.com)

Please visit our website at: [www.bpsbioscience.com](http://www.bpsbioscience.com)