



SZABO SCANDIC

Part of Europa Biosite

Produktinformation



Forschungsprodukte & Biochemikalien



Zellkultur & Verbrauchsmaterial



Diagnostik & molekulare Diagnostik



Laborgeräte & Service

Weitere Information auf den folgenden Seiten!
See the following pages for more information!



Lieferung & Zahlungsart

siehe unsere [Liefer- und Versandbedingungen](#)

Zuschläge

- Mindermengenzuschlag
- Trockeneiszuschlag
- Gefahrgutzuschlag
- Expressversand

SZABO-SCANDIC HandelsgmbH

Quellenstraße 110, A-1100 Wien

T. +43(0)1 489 3961-0

F. +43(0)1 489 3961-7

mail@szabo-scandic.com

www.szabo-scandic.com

[linkedin.com/company/szaboscandic](https://www.linkedin.com/company/szaboscandic) 

Data Sheet

PD-1, Fc Fusion, PE-labeled

Human, recombinant, Fc fusion protein

Catalog #: 71243-2

Lot #: 170413

Conc.: 1.89 mg/ml

Formulated in: 8 mM Na phosphate pH 7.4,
 110 mM NaCl, 2.2 mM KCl and 20% glycerol

Stability: At least 6 months at -80°C . Avoid freeze/thaw cycles. Protein may be diluted to $\geq 100 \mu\text{g/ml}$ in PBS + glycerol and stored at -80°C .

References:

1. Shinohara, T., *et al.*, *Genomics*. 1994 Oct;**23(3)**:704-6.
2. James, E.S., *et al.*, *Genes Immun*. 2005 Aug;**6(5)**:430-7.

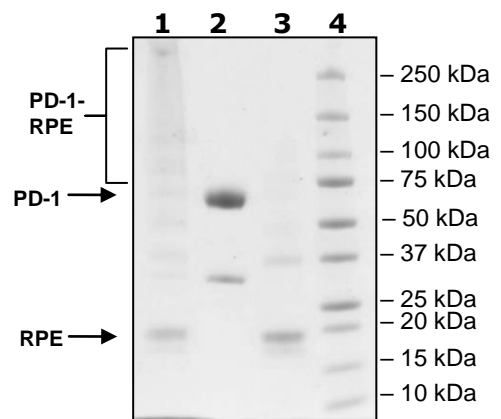
Description: Human secreted programmed cell death 1 (PD-1)-Fc fusion protein, also known as, PDCD1, SLEB2, CD279 and HPD-L, GenBank Accession No. NM_005018, a.a 25-167, fused at the C-terminus to the Fc portion of human IgG1, expressed in a HEK293 cell expression system. This protein runs at a higher M.W. by SDS-PAGE due to glycosylation. The protein was randomly labeled with RPE on accessible lysine residues.

Application: Useful for labeling PD-L1-expressing cells for flow cytometry or immunohistochemistry. For FACS analysis on human cells expressing PD-1, we recommend preclearing by using a non-specific antibody at 10 $\mu\text{g/ml}$ to remove any non-specific binding, followed by PE labeled PD-1 fusion protein at 20 $\mu\text{g/ml}$.

Quality Assurance

**4-20% SDS-PAGE
 Coomassie staining**

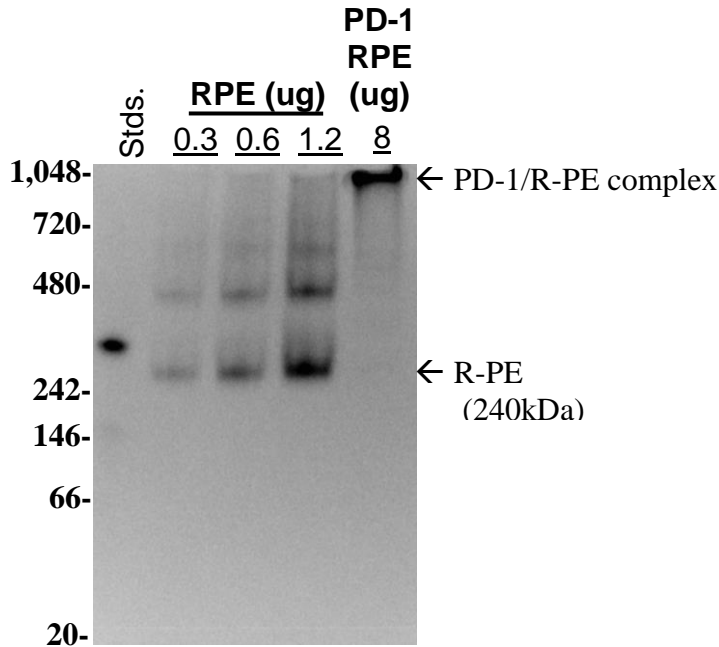
- Lane 1:**
 8 μg hPD-1-hFc- RPE
- Lane 2:**
 4 μg hPD-1-hFc
- Lane3:**
 4 μg R-PE
- Lane 4:**
 Protein Marker



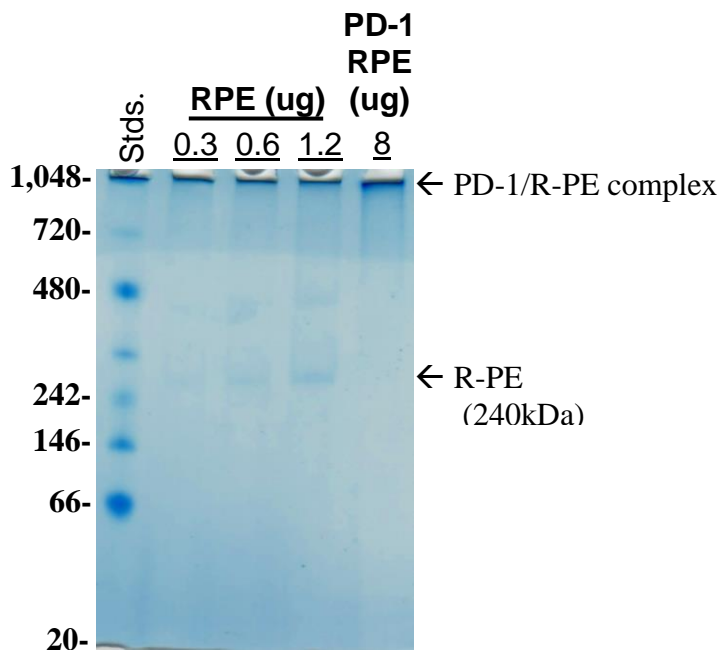
OUR PRODUCTS ARE FOR RESEARCH USE ONLY. NOT FOR DIAGNOSTIC OR THERAPEUTIC USE.

To place your order, please contact us by Phone **1.858.829.3082** Fax **1.858.481.8694**
 Or you can Email us at: info@bpsbioscience.com
 Please visit our website at: www.bpsbioscience.com

Native PAGE Fluorescence



Coomassie Stained



OUR PRODUCTS ARE FOR RESEARCH USE ONLY. NOT FOR DIAGNOSTIC OR THERAPEUTIC USE.

To place your order, please contact us by Phone **1.858.829.3082** Fax **1.858.481.8694**
 Or you can Email us at: info@bpsbioscience.com
 Please visit our website at: www.bpsbioscience.com