



# SZABO SCANDIC

Part of Europa Biosite

## Produktinformation



Forschungsprodukte & Biochemikalien



Zellkultur & Verbrauchsmaterial



Diagnostik & molekulare Diagnostik



Laborgeräte & Service

Weitere Information auf den folgenden Seiten!  
See the following pages for more information!



### Lieferung & Zahlungsart

siehe unsere [Liefer- und Versandbedingungen](#)

### Zuschläge

- Mindermengenzuschlag
- Trockeneiszuschlag
- Gefahrgutzuschlag
- Expressversand

### SZABO-SCANDIC HandelsgmbH

Quellenstraße 110, A-1100 Wien

T. +43(0)1 489 3961-0

F. +43(0)1 489 3961-7

[mail@szabo-scandic.com](mailto:mail@szabo-scandic.com)

[www.szabo-scandic.com](http://www.szabo-scandic.com)

[linkedin.com/company/szaboscandic](https://www.linkedin.com/company/szaboscandic) 

## Data Sheet

### PD-1 (E136A), Fc fusion, Biotin-labeled

Human, recombinant, Fc fusion protein  
with C-terminal AviTag™

**Catalog #:** 71247

**Lot #:** 160301-G      **Conc.:** 1.50 mg/ml

**Formulated in:** 8 mM phosphate, pH 7.4,  
110 mM NaCl, 2.2 mM KCl, and 20%  
glycerol

**Stability:** At least 6 months at -80 °C. *Avoid  
freeze/thaw cycles. Protein may be diluted  
to ≥ 100 µg/ml in PBS + glycerol and stored  
at -80 °C.*

**References:**

1. Freeman, G.J., *et al.*, *J. Exp. Med.*  
2000 Oct 2;**192(7)**:1027-34.
2. Dong, H., *et al.*, *Nat Med.* 1999  
Dec;**5(12)**:1365-9.

**Description:**

Human secreted Programmed Cell Death 1 (PD-1)-Fc fusion protein, also known as CD279, PDCD1, and SLEB2, GenBank Accession No. NM\_014143, a.a. 25-167 with an E136A mutation, fused at the C-terminus with the Fc portion of human IgG1, and C-terminal AviTag™, expressed in a HEK293 cell expression system and enzymatically biotin-labeled using AviTag™ technology. MW = 44.5 kDa. This protein runs at a higher MW by SDS-PAGE due to glycosylation.

**Application:**

Useful for the study of protein-protein interaction and *in vitro* and *in vivo* protein function.

## Quality Assurance

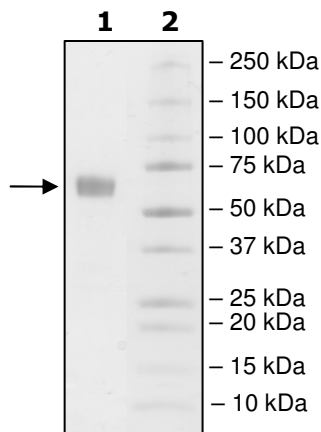
**4-20% SDS-PAGE  
Coomassie staining**

**Lane 1:**  
2 µg PD-1 (E136A)

**Lane 2:**  
Protein Marker

**MW:** 44.5 kDa+glycans

**Purity:** ≥90%



OUR PRODUCTS ARE FOR RESEARCH USE ONLY. NOT FOR DIAGNOSTIC OR THERAPEUTIC USE.

To place your order, please contact us by Phone **1.858.829.3082** Fax **1.858.481.8694**

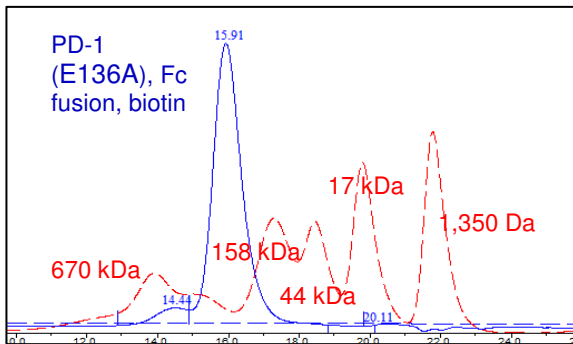
Or you can Email us at: [info@bpsbioscience.com](mailto:info@bpsbioscience.com)

Please visit our website at: [www.bpsbioscience.com](http://www.bpsbioscience.com)



6044 Cornerstone Court W, Ste E  
San Diego, CA 92121  
**Tel:** 1.858.829.3082  
**Fax:** 1.858.481.8694  
**Email:** [info@bpsbioscience.com](mailto:info@bpsbioscience.com)

### Gel Filtration Curve



<10% Aggregates

OUR PRODUCTS ARE FOR RESEARCH USE ONLY. NOT FOR DIAGNOSTIC OR THERAPEUTIC USE.

To place your order, please contact us by Phone **1.858.829.3082** Fax **1.858.481.8694**  
Or you can Email us at: [info@bpsbioscience.com](mailto:info@bpsbioscience.com)  
Please visit our website at: [www.bpsbioscience.com](http://www.bpsbioscience.com)