



SZABO SCANDIC

Part of Europa Biosite

Produktinformation



Forschungsprodukte & Biochemikalien



Zellkultur & Verbrauchsmaterial



Diagnostik & molekulare Diagnostik



Laborgeräte & Service

Weitere Information auf den folgenden Seiten!
See the following pages for more information!



Lieferung & Zahlungsart

siehe unsere [Liefer- und Versandbedingungen](#)

Zuschläge

- Mindermengenzuschlag
- Trockeneiszuschlag
- Gefahrgutzuschlag
- Expressversand

SZABO-SCANDIC HandelsgmbH

Quellenstraße 110, A-1100 Wien

T. +43(0)1 489 3961-0

F. +43(0)1 489 3961-7

mail@szabo-scandic.com

www.szabo-scandic.com

[linkedin.com/company/szaboscandic](https://www.linkedin.com/company/szaboscandic) 

Data Sheet

GITR (CD357), Fc Fusion, Biotin-labeled

Human, recombinant, Fc fusion protein, Biotin labeled

Catalog #: 71256

Lot #: 150611 **Conc.:** 0.94 mg/ml

Formulated in: 8 mM Phosphate, pH 7.4, 110 mM NaCl, 2.2 mM KCl, and 20% glycerol

Stability: At least 6 months at -80°C . Avoid freeze/thaw cycles. Protein may be diluted to $\geq 100 \mu\text{g/ml}$ in PBS + glycerol and stored at -80°C .

References:

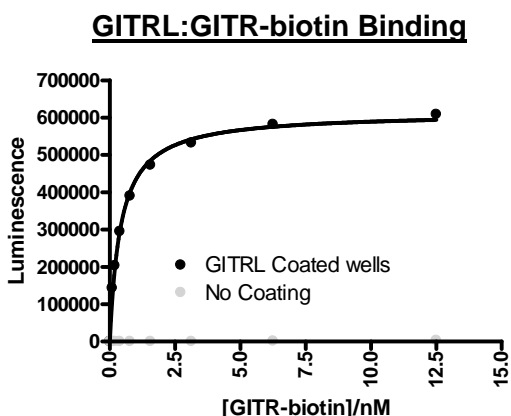
1. Shimizu, J., *et al.*, *Nat. Immunol.* 2002; **3**: 135-142.
2. Ko, K., *et al.*, *J. Exp. Med.* 2005; **202(7)**: 885-891.

Description: Human secreted GITR, also known as Glucocorticoid-induced TNFR-Related Protein, Tumor Necrosis Factor Receptor Superfamily member 18, TNFRSF18, Activation-Inducible TNFR Family Receptor, AITR, and CD357, GenBank Accession No. NM_004195, a.a. 26-161 expressed in a HEK293 cell expression system, fused at the C-terminus to the Fc portion of human IgG1, and enzymatically biotin-labeled using Avi-tag™ technology. MW = 43 kDa (monomer). This protein runs at a higher MW by SDS-PAGE due to glycosylation.

Assay Description: GITR-biotin binding to GITRL was confirmed using the GITRL:GITR[Biotinylated] Inhibitor Screening Assay Kit (BPS Cat. #72061).

Application: Useful for studying protein binding and screening small molecules.

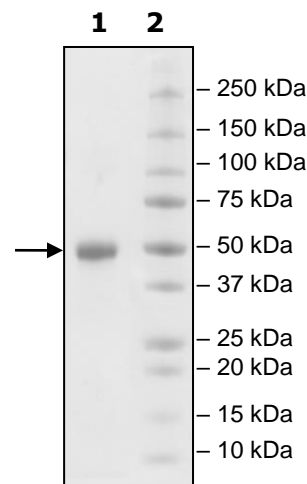
Quality Assurance



**4-20% SDS-PAGE
Coomassie staining**

Lane 1:
3 μg GITR
Lane 2:
Protein Marker

MW: 43 kDa + glycans
Purity: $\geq 90\%$



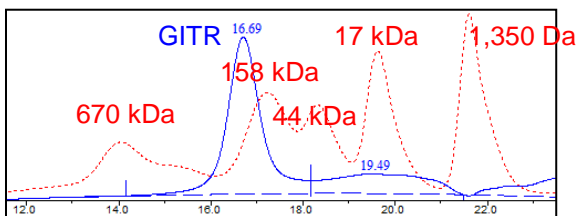
OUR PRODUCTS ARE FOR RESEARCH USE ONLY. NOT FOR DIAGNOSTIC OR THERAPEUTIC USE.

To place your order, please contact us by Phone **1.858.829.3082** Fax **1.858.481.8694**
 Or you can Email us at: info@bpsbioscience.com
 Please visit our website at: www.bpsbioscience.com



6044 Cornerstone Court W, Ste E
San Diego, CA 92121
Tel: 1.858.829.3082
Fax: 1.858.481.8694
Email: info@bpsbioscience.com

Gel Filtration Trace



<10% Aggregation

OUR PRODUCTS ARE FOR RESEARCH USE ONLY. NOT FOR DIAGNOSTIC OR THERAPEUTIC USE.

To place your order, please contact us by Phone **1.858.829.3082** Fax **1.858.481.8694**
Or you can Email us at: info@bpsbioscience.com
Please visit our website at: www.bpsbioscience.com