



SZABO SCANDIC

Part of Europa Biosite

Produktinformation



Forschungsprodukte & Biochemikalien



Zellkultur & Verbrauchsmaterial



Diagnostik & molekulare Diagnostik



Laborgeräte & Service

Weitere Information auf den folgenden Seiten!
See the following pages for more information!



Lieferung & Zahlungsart

siehe unsere [Liefer- und Versandbedingungen](#)

Zuschläge

- Mindermengenzuschlag
- Trockeneiszuschlag
- Gefahrgutzuschlag
- Expressversand

SZABO-SCANDIC HandelsgmbH

Quellenstraße 110, A-1100 Wien

T. +43(0)1 489 3961-0

F. +43(0)1 489 3961-7

mail@szabo-scandic.com

www.szabo-scandic.com

[linkedin.com/company/szaboscandic](https://www.linkedin.com/company/szaboscandic) 

Data Sheet

PD-1 (Mouse), Fc fusion (Human), PE-labeled

Mouse, Recombinant, Fc fusion protein

Catalog #: 71267

Lot #: 160420

Conc.: 1.39 mg/ml

Formulated in: 8 mM Na Phosphate pH 7.4, 110 mM NaCl, 2.2 mM KCl and 20% glycerol.

Stability: At least 6 months at -80°C . *Avoid freeze/thaw cycles. Protein may be diluted to $\geq 100 \mu\text{g/ml}$ in PBS + glycerol and stored at -80°C .*

References:

1. Agata, A., *et al.*, *Immunol.* 1996 Oct;**8(5)**:765-772.
2. Freeman, G., *et al.*, *JEM.* 2000 Oct; **192(7)**:1027-1034.

Description: Mouse secreted programmed cell death 1 (PD-1)-Fc fusion protein, also known as, PDCD1, SLEB2, CD279 and HPD-L, GenBank Accession No. NM_008798, a.a 25-167, fused at the C-terminus to the Fc portion of human IgG1, expressed in a HEK293 cell expression system. MW = 43 kDa. This protein runs at a higher M.W. by SDS-PAGE due to glycosylation. The protein was randomly labeled with RPE on accessible lysine residues.

Application: Useful for labeling PD-L1 expressing cells for flow cytometry or immunohistochemistry.

Quality Assurance

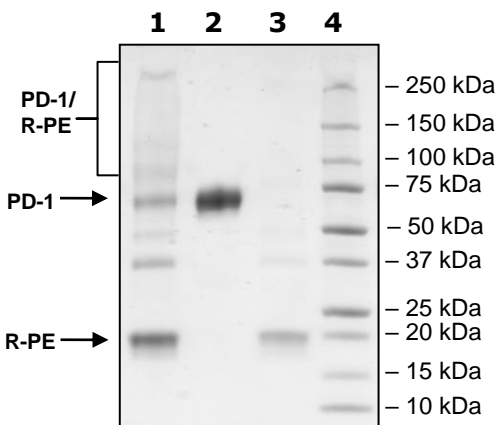
**4-20% SDS-PAGE
 Coomassie staining**

Lane 1:
 8 μg mPD-1/ R-PE

Lane 2:
 4 μg mPD-1
MW: 43 kDa

Lane 3:
 4 μg R-PE

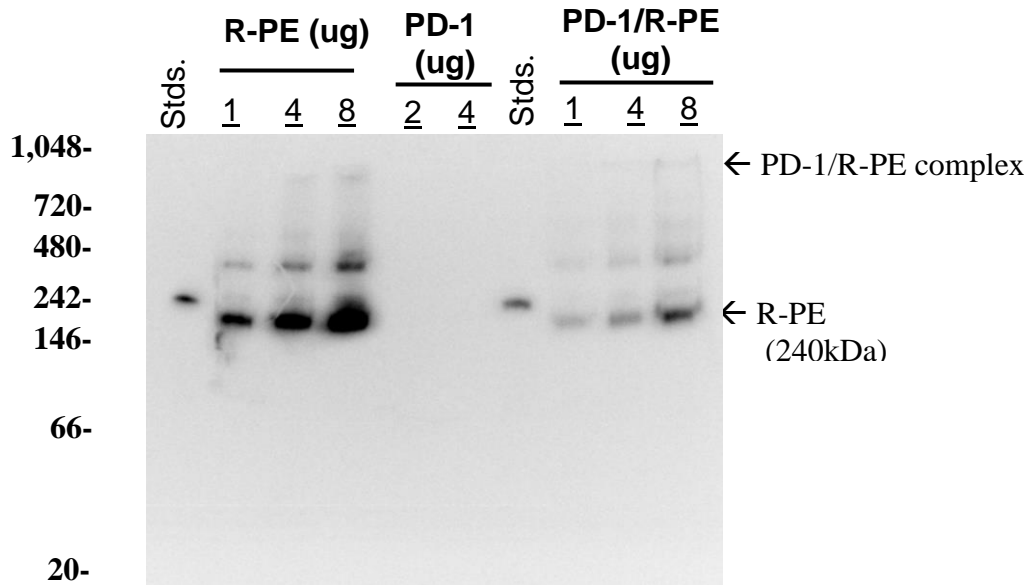
Lane 4:
 Protein Marker



OUR PRODUCTS ARE FOR RESEARCH USE ONLY. NOT FOR DIAGNOSTIC OR THERAPEUTIC USE.

To place your order, please contact us by Phone **1.858.829.3082** Fax **1.858.481.8694**
 Or you can Email us at: info@bpsbioscience.com
 Please visit our website at: www.bpsbioscience.com

Native PAGE Fluorescence



OUR PRODUCTS ARE FOR RESEARCH USE ONLY. NOT FOR DIAGNOSTIC OR THERAPEUTIC USE.

To place your order, please contact us by Phone **1.858.829.3082** Fax **1.858.481.8694**
 Or you can Email us at: info@bpsbioscience.com
 Please visit our website at: www.bpsbioscience.com