



SZABO SCANDIC

Part of Europa Biosite

Produktinformation



Forschungsprodukte & Biochemikalien



Zellkultur & Verbrauchsmaterial



Diagnostik & molekulare Diagnostik



Laborgeräte & Service

Weitere Information auf den folgenden Seiten!
See the following pages for more information!



Lieferung & Zahlungsart

siehe unsere [Liefer- und Versandbedingungen](#)

Zuschläge

- Mindermengenzuschlag
- Trockeneiszuschlag
- Gefahrgutzuschlag
- Expressversand

SZABO-SCANDIC HandelsgmbH

Quellenstraße 110, A-1100 Wien

T. +43(0)1 489 3961-0

F. +43(0)1 489 3961-7

mail@szabo-scandic.com

www.szabo-scandic.com

[linkedin.com/company/szaboscandic](https://www.linkedin.com/company/szaboscandic) 

Data Sheet

PD-L1(CD274), FLAG-Avi-His-Tag, HiP™

Human, Recombinant, C-terminal FLAG-Avi-His-tag

Catalog #: 71279

Lot #: 150623

Conc.: 1.13 mg/ml

Formulated in: 8 mM Phosphate, pH 7.4, 110 mM NaCl, 2.2 mM KCl, and 20% glycerol

Stability: At least 6 months at -80°C . Avoid freeze/thaw cycles. Protein may be diluted to $\geq 100 \mu\text{g/ml}$ in PBS + glycerol and stored at -80°C .

References:

- Freeman, G.J., *et al. J. Exp. Med.* 2000; **192(7):** 1027-1034
- Dong, H., *et al., Nat. Med.* 1999; **5(12):** 1365-1369.

Description: Human Programmed Cell Death 1 Ligand 1 (PD-L1), also known as CD274 and B7 homolog 1 (B7-H1), PDCD1 ligand 1, programmed death ligand 1, PDCD1L1, GenBank Accession No. NM_014143, a.a. 19-239, with a C-terminal FLAG-Avi-His-tag, expressed in a HEK293 cell expression system. MW = 30 kDa.

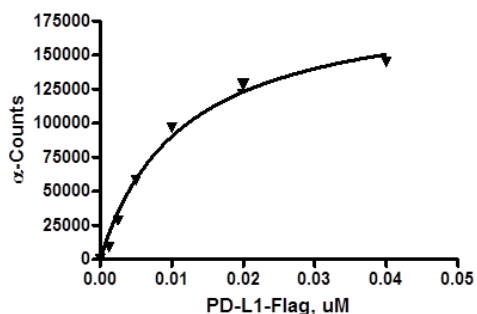
Assay Conditions: 10 nM PD-L1, Biotinlabeled (BPS Cat. #71105) was mixed with varying amounts of PD-1, FLAG-tag (BPS Cat. #71279) in PD-1 Assay Buffer for 1 hr at RT. FLAG-acceptor beads (left) or Nickelacceptor beads (right) were added and incubated for 30 min at RT followed by streptavidin-conjugated donor beads for 30 min at RT. Alpha counts were read.

Application:

Useful for studying protein binding and for screening small molecules and antibodies.

Quality Assurance

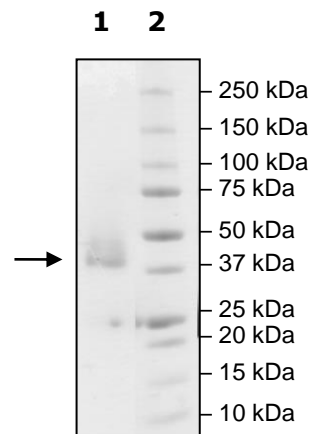
PD-L1 Flag: PD-1 Binding Assay



**4-20% SDS-PAGE
Coomassie staining**

Lane 1:
3μg PD-L1
Lane 2:
Protein Marker

MW: 30 kDa
Purity: $\geq 90\%$



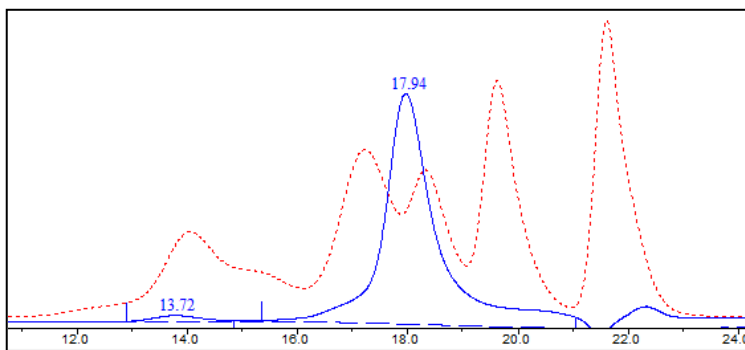
OUR PRODUCTS ARE FOR RESEARCH USE ONLY. NOT FOR DIAGNOSTIC OR THERAPEUTIC USE.

To place your order, please contact us by Phone **1.858.829.3082** Fax **1.858.481.8694**
 Or you can Email us at: info@bpsbioscience.com
 Please visit our website at: www.bpsbioscience.com



6042 Cornerstone Court W, Ste B
San Diego, CA 92121
Tel: 1.858.829.3082
Fax: 1.858.481.8694
Email: info@bpsbioscience.com

Gel Filtration Curve:



< 10% Aggregation

OUR PRODUCTS ARE FOR RESEARCH USE ONLY. NOT FOR DIAGNOSTIC OR THERAPEUTIC USE.

To place your order, please contact us by Phone **1.858.829.3082** Fax **1.858.481.8694**
Or you can Email us at: **info@bpsbioscience.com**
Please visit our website at: www.bpsbioscience.com