



SZABO SCANDIC

Part of Europa Biosite

Produktinformation



Forschungsprodukte & Biochemikalien



Zellkultur & Verbrauchsmaterial



Diagnostik & molekulare Diagnostik



Laborgeräte & Service

Weitere Information auf den folgenden Seiten!
See the following pages for more information!



Lieferung & Zahlungsart

siehe unsere [Liefer- und Versandbedingungen](#)

Zuschläge

- Mindermengenzuschlag
- Trockeneiszuschlag
- Gefahrgutzuschlag
- Expressversand

SZABO-SCANDIC HandelsgmbH

Quellenstraße 110, A-1100 Wien

T. +43(0)1 489 3961-0

F. +43(0)1 489 3961-7

mail@szabo-scandic.com

www.szabo-scandic.com

[linkedin.com/company/szaboscandic](https://www.linkedin.com/company/szaboscandic) 

Data Sheet

KIR2DL1 Fc-fusion, Biotin-labeled

Human, recombinant, Fc fusion protein,
C-terminal Avi-tag

Catalog #: 71296

Lot #: 160630 **Conc.:** 0.79 mg/ml

Formulation: 8 mM phosphate, pH 7.4, 110 mM NaCl, 2.2 mM KCl, and 20% glycerol.

Stability: Stable for at least 12 months at -80°C. Avoid freeze/thaw cycles. Store diluted antibody with carrier protein (BSA 0.1 – 0.5%) at 4°C, stable for 2 weeks.

References:

1. Fan QR, *et al.*, *Nature Immunology*. 2001 Oct; **2**: 452-460.
2. Gazit, R., *et al.*, *Blood*. 2004 Nov; **103**: 1965-1966.

Description: Human KIR2DL1, also known as Killer cell immunoglobulin-like receptor 2DL1, CD158A, or NKAT-1, .GenBank Accession No. NM_014218, a.a. 22-245 fused at the C terminus to the Fc portion of human IgG1 followed by a C-terminal Avi-tag™ and expressed in a HEK293 cell expression system. MW=52 kDa. This protein is enzymatically biotinylated using Avi-Tag™ technology. Biotinylation is confirmed to be ≥90%. This protein runs at a higher MW due to glycosylation.

Applications: Useful as an antigen and in protein binding studies.

Quality Assurance

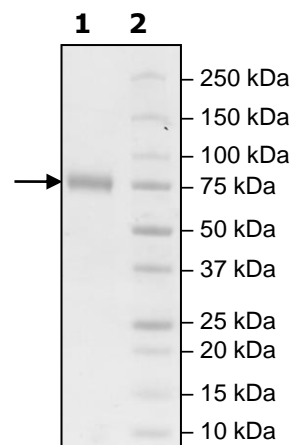
**4-20% SDS-PAGE
Coomassie staining**

Lane 1:
3 µg KIR2DL1

Lane 2:
Protein Marker

MW: 52 kDa + glycans

Purity: ≥90%



OUR PRODUCTS ARE FOR RESEARCH USE ONLY. NOT FOR DIAGNOSTIC OR THERAPEUTIC USE.

To place your order, please contact us by Phone **1.858.829.3082** Fax **1.858.481.8694**

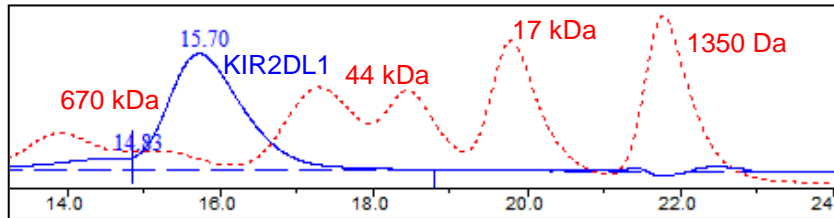
Or you can Email us at: info@bpsbioscience.com

Please visit our website at: www.bpsbioscience.com



6042 Cornerstone Court W, Ste B
San Diego, CA 92121
Tel: 1.858.829.3082
Fax: 1.858.481.8694
Email: info@bpsbioscience.com

Gel Filtration Curve



< 10% Aggregation

OUR PRODUCTS ARE FOR RESEARCH USE ONLY. NOT FOR DIAGNOSTIC OR THERAPEUTIC USE.

To place your order, please contact us by Phone **1.858.829.3082** Fax **1.858.481.8694**
Or you can Email us at: info@bpsbioscience.com
Please visit our website at: www.bpsbioscience.com