



# SZABO SCANDIC

Part of Europa Biosite

## Produktinformation



Forschungsprodukte & Biochemikalien



Zellkultur & Verbrauchsmaterial



Diagnostik & molekulare Diagnostik



Laborgeräte & Service

Weitere Information auf den folgenden Seiten!  
See the following pages for more information!



### Lieferung & Zahlungsart

siehe unsere [Liefer- und Versandbedingungen](#)

### Zuschläge

- Mindermengenzuschlag
- Trockeneiszuschlag
- Gefahrgutzuschlag
- Expressversand

### SZABO-SCANDIC HandelsgmbH

Quellenstraße 110, A-1100 Wien

T. +43(0)1 489 3961-0

F. +43(0)1 489 3961-7

[mail@szabo-scandic.com](mailto:mail@szabo-scandic.com)

[www.szabo-scandic.com](http://www.szabo-scandic.com)

[linkedin.com/company/szaboscandic](https://www.linkedin.com/company/szaboscandic) 

## Data Sheet

### KIR2DL2 Fc-fusion, Biotin-labeled

Human, recombinant, Fc fusion protein,  
C-terminal Avi-tag

**Catalog #:** 71297

**Lot #:** 160630      **Conc.:** 0.79 mg/ml

**Formulation:** 8 mM phosphate, pH 7.4, 110 mM NaCl, 2.2 mM KCl, and 20% glycerol.

**Stability:** Stable for at least 6months at -80°C. *Avoid freeze/thaw cycles.* Protein may be diluted to  $\geq 100$   $\mu\text{g/ml}$  in PBS + glycerol and stored at -80°C.

**References:**

1. Miller, J., *et al.*, *Blood*. 2001 Aug; **98(3)**: 705-713.
2. Moesta AK *et al.*, *Immunology*. 2001 Mar; **180(6)**: 3969-3979.

**Description:** Human KIR2DL2, also known as Killer cell immunoglobulin-like receptor 2DL2, CD158K, or NKAT-4, GenBank Accession No. NM\_014219, a.a. 22-245 fused at the C terminus to the Fc portion of human IgG1 followed by a C-terminal Avi-tag™ and expressed in a HEK293 cell expression system. MW=53 kDa. This protein is enzymatically biotinylated using Avi-Tag™ technology. Biotinylation is confirmed to be  $\geq 90\%$ . This protein runs at a higher MW due to glycosylation.

**Applications:** Useful as an antigen and in protein binding studies.

---

## Quality Assurance

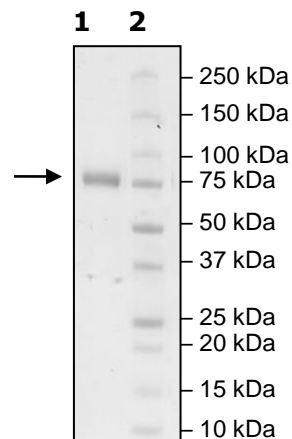
**4-20% SDS-PAGE  
Coomassie staining**

**Lane 1:**  
3  $\mu\text{g}$  KIR2DL2

**Lane 2:**  
Protein Marker

**MW:** 53 kDa+glycans

**Purity:**  $\geq 90\%$



OUR PRODUCTS ARE FOR RESEARCH USE ONLY. NOT FOR DIAGNOSTIC OR THERAPEUTIC USE.

To place your order, please contact us by Phone **1.858.829.3082** Fax **1.858.481.8694**

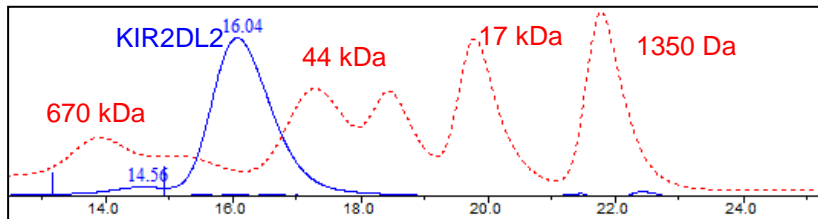
Or you can Email us at: [info@bpsbioscience.com](mailto:info@bpsbioscience.com)

Please visit our website at: [www.bpsbioscience.com](http://www.bpsbioscience.com)



6042 Cornerstone Court W, Ste B  
San Diego, CA 92121  
**Tel:** 1.858.829.3082  
**Fax:** 1.858.481.8694  
**Email:** info@bpsbioscience.com

### Gel Filtration Curve



< 10% Aggregation

OUR PRODUCTS ARE FOR RESEARCH USE ONLY. NOT FOR DIAGNOSTIC OR THERAPEUTIC USE.

To place your order, please contact us by Phone **1.858.829.3082** Fax **1.858.481.8694**  
Or you can Email us at: [info@bpsbioscience.com](mailto:info@bpsbioscience.com)  
Please visit our website at: [www.bpsbioscience.com](http://www.bpsbioscience.com)