



SZABO SCANDIC

Part of Europa Biosite

Produktinformation



Forschungsprodukte & Biochemikalien



Zellkultur & Verbrauchsmaterial



Diagnostik & molekulare Diagnostik



Laborgeräte & Service

Weitere Information auf den folgenden Seiten!
See the following pages for more information!



Lieferung & Zahlungsart

siehe unsere [Liefer- und Versandbedingungen](#)

Zuschläge

- Mindermengenzuschlag
- Trockeneiszuschlag
- Gefahrgutzuschlag
- Expressversand

SZABO-SCANDIC HandelsgmbH

Quellenstraße 110, A-1100 Wien

T. +43(0)1 489 3961-0

F. +43(0)1 489 3961-7

mail@szabo-scandic.com

www.szabo-scandic.com

[linkedin.com/company/szaboscandic](https://www.linkedin.com/company/szaboscandic) 

Data Sheet

KIR2DL3, Fc fusion, Avi-Tag™

Human, recombinant, C-terminal Fc fusion
(Human IgG1), C-terminal Avi-Tag™

Catalog #: 71299

Lot #: 160405 **Conc.:** 1.26 mg/ml

Formulation: 8 mM phosphate, pH 7.4, 110 mM NaCl, 2.2 mM KCl, and 20% glycerol.

Stability: Stable for at least 12 months at -80°C. Avoid freeze/thaw cycles.

References:

1. Moesta, A, *et al.*, *Immunology*. 2008 Mar; **180(6)**:3969-3979.
2. Maenaka, K., *et al.*, *Structure*. 1999 Jan; **7(4)** : 391-398.

Description: Human KIR2DL3, also known as Killer cell immunoglobulin-like receptor 2DL3, KIR2DS5 and KIRCL23. GenBank Accession No. NM_015868 a. a. 22-245, fused at the C-terminus to the Fc portion of human IgG1 followed by a C-terminal Avi-Tag™ and expressed in a HEK293 cell expression system. MW=53 kDa. This protein runs at a higher MW due to glycosylation.

Applications: Useful for protein binding studies.

Quality Assurance

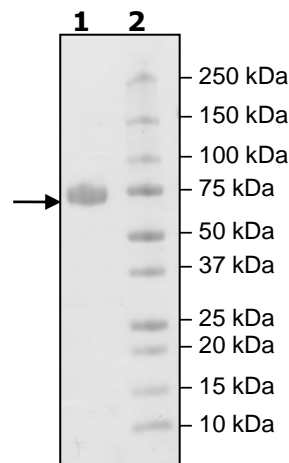
**4-20% SDS-PAGE
Coomassie staining**

Lane 1:
3 µg KIR2DL3

Lane 2:
Protein Marker

MW: 53 kDa + glycans

Purity: ≥90%



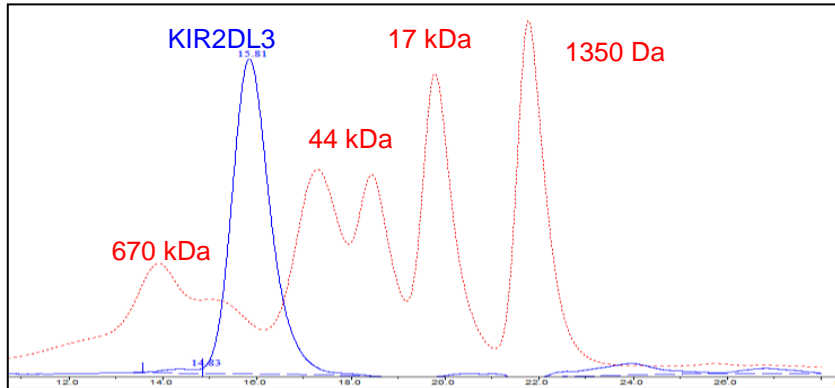
OUR PRODUCTS ARE FOR RESEARCH USE ONLY. NOT FOR DIAGNOSTIC OR THERAPEUTIC USE.

To place your order, please contact us by Phone **1.858.829.3082** Fax **1.858.481.8694**

Or you can Email us at: info@bpsbioscience.com

Please visit our website at: www.bpsbioscience.com

Gel Filtration Curve



<10% Aggregation

OUR PRODUCTS ARE FOR RESEARCH USE ONLY. NOT FOR DIAGNOSTIC OR THERAPEUTIC USE.

To place your order, please contact us by Phone **1.858.829.3082** Fax **1.858.481.8694**
Or you can Email us at: info@bpsbioscience.com
Please visit our website at: www.bpsbioscience.com