



SZABO SCANDIC

Part of Europa Biosite

Produktinformation



Forschungsprodukte & Biochemikalien



Zellkultur & Verbrauchsmaterial



Diagnostik & molekulare Diagnostik



Laborgeräte & Service

Weitere Information auf den folgenden Seiten!
See the following pages for more information!



Lieferung & Zahlungsart

siehe unsere [Liefer- und Versandbedingungen](#)

Zuschläge

- Mindermengenzuschlag
- Trockeneiszuschlag
- Gefahrgutzuschlag
- Expressversand

SZABO-SCANDIC HandelsgmbH

Quellenstraße 110, A-1100 Wien

T. +43(0)1 489 3961-0

F. +43(0)1 489 3961-7

mail@szabo-scandic.com

www.szabo-scandic.com

[linkedin.com/company/szaboscandic](https://www.linkedin.com/company/szaboscandic) 

Data Sheet

PD-L1 (T20Q), Fc fusion, Biotin-labeled

Human, recombinant, Fc fusion protein with C-terminal Avi-tag™

Catalog #: 71312

Lot #: 150728-G2 **Conc.:** 0.74 mg/ml

Formulated in: 8 mM Phosphate, pH 7.4, 110 mM NaCl, 2.2 mM KCl, and 20% glycerol

Stability: At least 6 months at -80 °C. Avoid freeze/thaw cycles. Protein may be diluted to ≥ 100 µg/ml in PBS + glycerol and stored at -80 °C.

References:

1. Freeman, G.J., *et al.*, *J Exp Med.* 2000 Oct 2;**192(7)**:1027-34.
2. Dong, H., *et al.*, *Nat Med.* 1999 Dec;**5(12)**:1365-9.

Description: Human secreted Programmed Cell Death 1 Ligand 1 (PD-L1)-Fc fusion protein, also known as CD274 and B7 homolog 1 (B7-H1) with a T20Q mutation, GenBank Accession No. NM_014143, amino acids 19-239, fused at the C-terminus with the Fc portion of human IgG1, with C-terminal Avi-tag™ expressed in a HEK293 cell expression system and enzymatically biotin-labeled using Avi-tag™ technology. MW = 54 kDa.

Application:

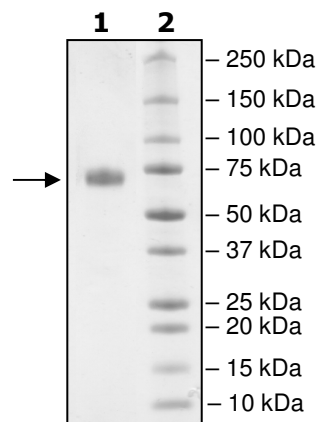
Useful for the study of protein-protein interaction, epitope mapping, and *in vitro* and *in vivo* protein function.

Quality Assurance

**4-20% SDS-PAGE
 Coomassie staining**

Lane 1:
 2 µg PD-L1 (T20Q)
Lane 2:
 Protein Marker

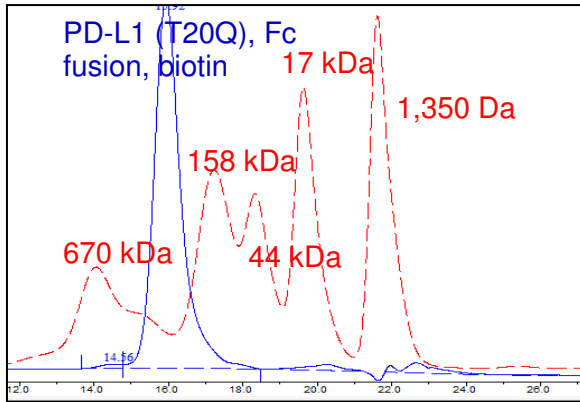
MW: 53.8kDa+glycans
Purity: ≥90%



OUR PRODUCTS ARE FOR RESEARCH USE ONLY. NOT FOR DIAGNOSTIC OR THERAPEUTIC USE.

To place your order, please contact us by Phone **1.858.829.3082** Fax **1.858.481.8694**
 Or you can Email us at: info@bpsbioscience.com
 Please visit our website at: www.bpsbioscience.com

Gel Filtration Curve



< 10%
 Aggregates

Sequence:

FQVTVPKDLVVEYGSNMTIECKFPVEKQLDLAALIVQWEMEDKNI IQFVHGEECLKVQHSSYRQ
 RARLLKQQLSLGNAALQITDVKLQDAGVYRCMISYGGADYKRITVKVNAPYNKINQRILVVDPVT
 SEHELTCQAEQYPAEVIWTSSDHQVLSGKTTTTNSKREEKLFNVTSTLRINTTTNEIFYCTFRR
 LDPEENHTAELVIPELPLAHPNERTDIEGRMDPKSCDKTHTCPPCPAPELLGGPSVFLFPPKPK
 DTLMI SRTPEVTCVVVDVSHEDPEVKFNWYVDGVEVHNAKTKPREEQYNSTYRVVSVLTVLHQDW
 LNGKEYKCKVSNKALPAPIEKTISKAKGQPREPQVYTLPPSREEMTKNQVSLTCLVKGFYPSDIA
 VEWESNGQPENNYKTPPVLDSDGSFFLYSKLTVDKSRWQQGNVSCSVMHEALHNHYTQKLSLSL
 SPGKGGGLNDIFEAQKIEWHE

Black: PD-L1 (a.a. 19-239)
 Green: Linker
 Red: Fc of human IgG1 (a.a.100-330)
 Blue: Avi-tag™
 Purple: T20Q mutation

OUR PRODUCTS ARE FOR RESEARCH USE ONLY. NOT FOR DIAGNOSTIC OR THERAPEUTIC USE.

To place your order, please contact us by Phone **1.858.829.3082** Fax **1.858.481.8694**
 Or you can Email us at: info@bpsbioscience.com
 Please visit our website at: www.bpsbioscience.com