



# SZABO SCANDIC

Part of Europa Biosite

## Produktinformation



Forschungsprodukte & Biochemikalien



Zellkultur & Verbrauchsmaterial



Diagnostik & molekulare Diagnostik



Laborgeräte & Service

Weitere Information auf den folgenden Seiten!  
See the following pages for more information!



### Lieferung & Zahlungsart

siehe unsere [Liefer- und Versandbedingungen](#)

### Zuschläge

- Mindermengenzuschlag
- Trockeneiszuschlag
- Gefahrgutzuschlag
- Expressversand

### SZABO-SCANDIC HandelsgmbH

Quellenstraße 110, A-1100 Wien

T. +43(0)1 489 3961-0

F. +43(0)1 489 3961-7

[mail@szabo-scandic.com](mailto:mail@szabo-scandic.com)

[www.szabo-scandic.com](http://www.szabo-scandic.com)

[linkedin.com/company/szaboscandic](https://www.linkedin.com/company/szaboscandic) 

## Data Sheet

### PD-1, FLAG-His-tag, Biotin-labeled

Human, recombinant, C-terminal FLAG-Avi-His-tag

**Catalog #:** 71325

**Lot #:** 150903

**Conc.:** 1.18 mg/ml

**Formulated in:** 8 mM Phosphate, pH 7.4, 110 mM NaCl, 2.2 mM KCl, and 20% glycerol

**Stability:** At least 6 months at  $-80^{\circ}\text{C}$ . Avoid freeze/thaw cycles. Protein may be diluted to  $\geq 100 \mu\text{g/ml}$  in PBS + glycerol and stored at  $-80^{\circ}\text{C}$ .

**References:**

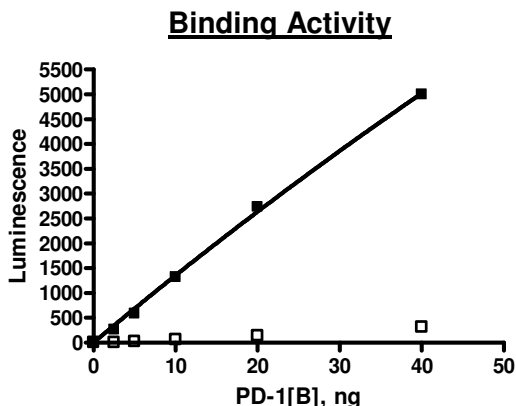
1. Shinohara, T., *et al.*, *Genomics*. 1994 Oct;**23(3)**:704-6.
2. James, E.S., *et al.*, *Genes Immun*. 2005 Aug;**6(5)**:430-7.

**Description:** Human secreted programmed cell death 1 (PD-1), also known as PDCD1, SLEB2, CD279 and HPD-L, GenBank Accession No. NM\_005018, a.a. 25-167, with C-terminal FLAG-Avi-His-tags, MW=20 kDa, expressed in a HEK293 cell expression system. The protein is enzymatically biotinylated using AviTag™ technology. This protein runs at a higher M.W. by SDS-PAGE due to glycosylation.

**Assay Conditions:** BPS Cat. 72005 protocol was followed. Briefly, 50  $\mu\text{l}$  of 2  $\mu\text{g/ml}$  PD-L1 was coated onto plates. 20  $\mu\text{l}$  of 0.5  $\mu\text{g/ml}$  PD-1, FLAG-His, Biotin-labeled was allowed to bind at room temp. for 2 hours. Strep-HRP was added and allowed to incubate at room temp for 1 hr, followed by HRP chemiluminescent substrate addition and plate reading.

**Application:** Useful for studying protein binding and screening small molecular inhibitors.

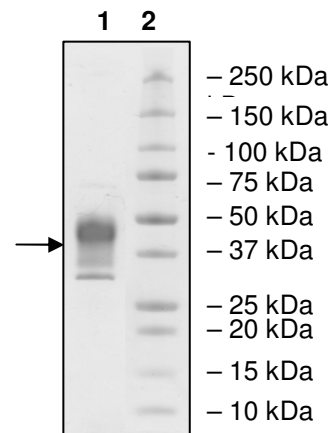
### Quality Assurance



**4-20% SDS-PAGE**  
**Coomassie staining**

**Lane 1:**  
3 $\mu\text{g}$  PD-1  
**Lane 2:**  
Protein Marker

**MW:** 20.3 kDa + glycans  
**Purity:**  $\geq 80\%$



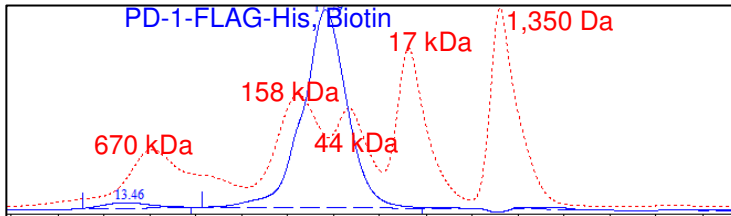
OUR PRODUCTS ARE FOR RESEARCH USE ONLY. NOT FOR DIAGNOSTIC OR THERAPEUTIC USE.

To place your order, please contact us by Phone **1.858.829.3082** Fax **1.858.481.8694**  
 Or you can Email us at: [info@bpsbioscience.com](mailto:info@bpsbioscience.com)  
 Please visit our website at: [www.bpsbioscience.com](http://www.bpsbioscience.com)



6044 Cornerstone Court W, Ste E  
San Diego, CA 92121  
**Tel:** 1.858.829.3082  
**Fax:** 1.858.481.8694  
**Email:** [info@bpsbioscience.com](mailto:info@bpsbioscience.com)

### Gel Filtration Curve



<5%  
Aggregation

OUR PRODUCTS ARE FOR RESEARCH USE ONLY. NOT FOR DIAGNOSTIC OR THERAPEUTIC USE.

To place your order, please contact us by Phone **1.858.829.3082** Fax **1.858.481.8694**  
Or you can Email us at: [info@bpsbioscience.com](mailto:info@bpsbioscience.com)  
Please visit our website at: [www.bpsbioscience.com](http://www.bpsbioscience.com)