



SZABO SCANDIC

Part of Europa Biosite

Produktinformation



Forschungsprodukte & Biochemikalien



Zellkultur & Verbrauchsmaterial



Diagnostik & molekulare Diagnostik



Laborgeräte & Service

Weitere Information auf den folgenden Seiten!
See the following pages for more information!



Lieferung & Zahlungsart

siehe unsere [Liefer- und Versandbedingungen](#)

Zuschläge

- Mindermengenzuschlag
- Trockeneiszuschlag
- Gefahrgutzuschlag
- Expressversand

SZABO-SCANDIC HandelsgmbH

Quellenstraße 110, A-1100 Wien

T. +43(0)1 489 3961-0

F. +43(0)1 489 3961-7

mail@szabo-scandic.com

www.szabo-scandic.com

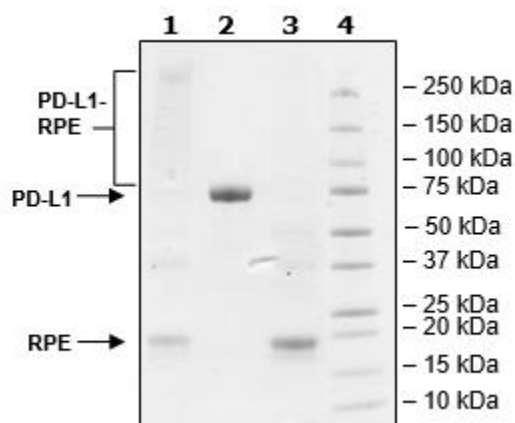
[linkedin.com/company/szaboscandic](https://www.linkedin.com/company/szaboscandic) 

Product Information

Construct:	PD-L1 (19-239-Fc (IgG1))-(PE)
Label:	R-Phycoerythrin (PE) is an oligomeric protein complex (270 kDa) from red algae that exhibits intensely bright red-orange fluorescence with high quantum yields. The complex consists of six heterodimers, α subunit (18 kDa) and β -subunit (20 kDa), and an additional γ -subunit (34 kDa). PE is covalently attached randomly through lysines on the target protein.
Concentration:	2.28 mg/ml
Species:	Human
Formulated In:	8 mM Na Phosphate pH 7.4, 110 mM NaCl, 2.2 mM KCl and 20% glycerol.
Expression System:	HEK293
Format:	Aqueous buffer solution
Stability:	At least 6 months at -80°C. Avoid freeze/thaw cycles. Protect from light.
Storage:	-80°C
Genbank Accession:	NM_014143
MW:	52 kDa + PE
Purity:	≥90%
Applications:	Useful for the study of protein-protein interaction and <i>in vitro</i> and <i>in vivo</i> protein function.

Quality Control Data

4-20% SDS-Page Coomassie Staining



Lane 1: 8 μ g hPD-L1-hFc-RPE
Lane 2: 4 μ g hPD-L1-hFc
Lane 3: 4 μ g R-PE
Lane 4: Protein Marker

Native PAGE Fluorescence

Coomassie Stained

