



SZABO SCANDIC

Part of Europa Biosite

Produktinformation



Forschungsprodukte & Biochemikalien



Zellkultur & Verbrauchsmaterial



Diagnostik & molekulare Diagnostik



Laborgeräte & Service

Weitere Information auf den folgenden Seiten!
See the following pages for more information!



Lieferung & Zahlungsart

siehe unsere [Liefer- und Versandbedingungen](#)

Zuschläge

- Mindermengenzuschlag
- Trockeneiszuschlag
- Gefahrgutzuschlag
- Expressversand

SZABO-SCANDIC HandelsgmbH

Quellenstraße 110, A-1100 Wien

T. +43(0)1 489 3961-0

F. +43(0)1 489 3961-7

mail@szabo-scandic.com

www.szabo-scandic.com

[linkedin.com/company/szaboscandic](https://www.linkedin.com/company/szaboscandic) 

Data Sheet

PD-L1 (Human), Fc fusion (Mouse IgG2a)

Human, Recombinant, C-terminal Fc fusion
Catalog #: 71999
Lot #: 160120 **Conc.:** 2.81 mg/mL

Formulated in: 8 mM phosphate, pH 7.4, 110 mM NaCl, 2.2 mM KCl, and 20% glycerol

Stability: At least 6 months at -80°C . Avoid freeze/thaw cycles. Protein may be diluted to $\geq 100 \mu\text{g/ml}$ in PBS + glycerol and stored at -80°C .

References:

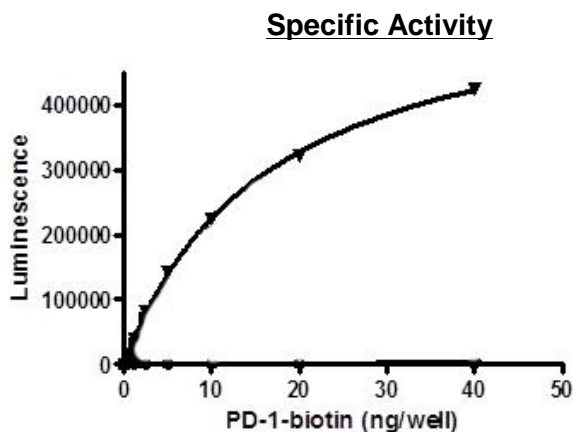
1. Freeman, G.J., *et al.*, *J Exp Med.* 2000 Oct 2;**192(7)**:1027-34.
2. Dong, H., *et al.*, *Nat Med.* 1999 Dec;**5(12)**:1365-9.

Description: Human secreted Programmed Cell Death 1 Ligand 1 (PD-L1)-Fc fusion protein, also known as CD274 and B7 homolog 1 (B7-H1), GenBank Accession No. NM_014143, amino acids 19-239, fused at the C-terminus with the Fc portion of mouse IgG2a, expressed in a HEK293 cell expression system. MW = 53 kDa.

Assay Conditions: Add 50 μL of PD-1-Biotin in assay buffer (PBS with 0.1% BSA) to the wells precoated with PD-L1 on a white maxisorp plate. Incubate the reaction mixture at room temperature for 2 hours. Wash and block wells. Then add streptavidin-HRP and incubate for 1 hour. Finally, add HRP chemiluminescent substrates and read luminescence.

Application: Useful for the study of protein-protein interaction and *in vitro* and *in vivo* protein function.

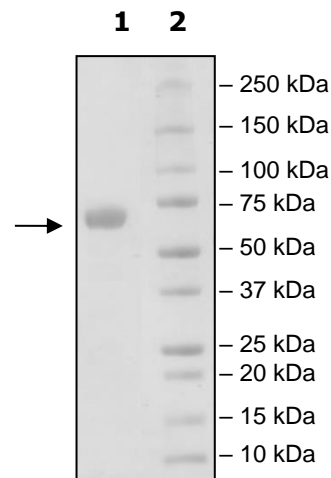
Quality Assurance



**4-20% SDS-PAGE
 Coomassie staining**

Lane 1:
 4 μg PD-L1
Lane 2:
 Protein Marker

MW: 53 kDa
Purity: $\geq 90\%$



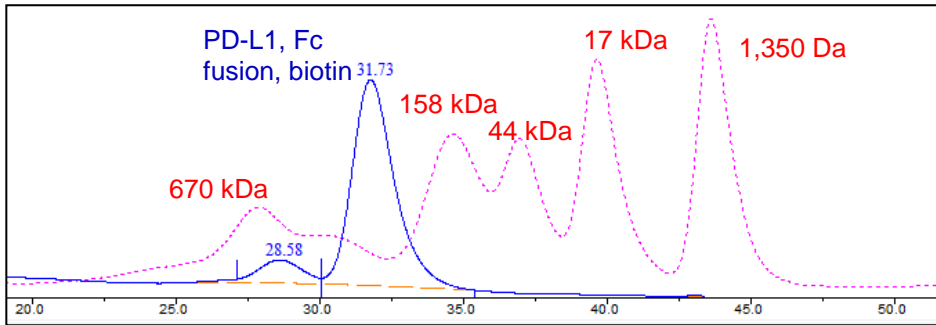
OUR PRODUCTS ARE FOR RESEARCH USE ONLY. NOT FOR DIAGNOSTIC OR THERAPEUTIC USE.

To place your order, please contact us by Phone **1.858.829.3082** Fax **1.858.481.8694**
 Or you can Email us at: info@bpsbioscience.com
 Please visit our website at: www.bpsbioscience.com



6042 Cornerstone Court W, Ste B
San Diego, CA 92121
Tel: 1.858.829.3082
Fax: 1.858.481.8694
Email: info@bpsbioscience.com

Gel Filtration Curve



< 10% Aggregation

OUR PRODUCTS ARE FOR RESEARCH USE ONLY. NOT FOR DIAGNOSTIC OR THERAPEUTIC USE.

To place your order, please contact us by Phone **1.858.829.3082** Fax **1.858.481.8694**
Or you can Email us at: info@bpsbioscience.com
Please visit our website at: www.bpsbioscience.com