



# SZABO SCANDIC

Part of Europa Biosite

## Produktinformation



Forschungsprodukte & Biochemikalien



Zellkultur & Verbrauchsmaterial



Diagnostik & molekulare Diagnostik



Laborgeräte & Service

Weitere Information auf den folgenden Seiten!  
See the following pages for more information!



### Lieferung & Zahlungsart

siehe unsere [Liefer- und Versandbedingungen](#)

### Zuschläge

- Mindermengenzuschlag
- Trockeneiszuschlag
- Gefahrgutzuschlag
- Expressversand

### SZABO-SCANDIC HandelsgmbH

Quellenstraße 110, A-1100 Wien

T. +43(0)1 489 3961-0

F. +43(0)1 489 3961-7

[mail@szabo-scandic.com](mailto:mail@szabo-scandic.com)

[www.szabo-scandic.com](http://www.szabo-scandic.com)

[linkedin.com/company/szaboscandic](https://www.linkedin.com/company/szaboscandic) 

## Data Sheet

### CD150, Fc Fusion, Biotin-Labeled

Human, Recombinant, Fc fusion protein,  
C-terminal Avi- tag™

**Catalog #:** 72307

**Lot #:** 160421

**Conc.:** 0.94 mg/ml

**Formulated in:** 8 mM Phosphate, pH 7.4,  
110 mM NaCl, 2.2 mM KCl, and 20%  
glycerol.

**Stability:** At least 6 months at  $-80^{\circ}\text{C}$ . Avoid  
freeze/thaw cycles. Protein may be diluted to  
 $\geq 100 \mu\text{g/ml}$  in PBS + glycerol and stored at  
 $-80^{\circ}\text{C}$ .

**References:**

1. Tatsuo, H. *et al.*, *Journal of Virology*.  
2001; **75**: 5842-5850.
2. Sidorenko, S. *et al.*, *Nature Immunology*.  
2003; **4**: 19-24.

**Description:**

Human CD150, Fc fusion protein, also known as signaling lymphocytic activation molecule (SLAM) or SLAMF1. GenBank Accession No. NM\_003037, a.a. 21-237 expressed in a HEK293 cell expression system. This protein is fused at the C-terminus to the Fc region of human IgG1 and is enzymatically biotinylated using Avi-tag™ technology. MW = 53 kDa. This protein runs at a higher MW by SDS-PAGE due to glycosylation.

**Application:**

Useful for studying protein binding and for screening small molecules and antibodies.

### Quality Assurance

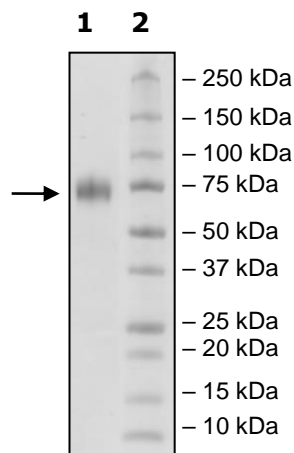
**4-20% SDS-PAGE  
Coomassie staining**

**Lane 1:**  
3 $\mu\text{g}$  CD150

**Lane 2:**  
Protein Marker

**MW:** 53 kDa+glycans

**Purity:**  $\geq 90\%$



OUR PRODUCTS ARE FOR RESEARCH USE ONLY. NOT FOR DIAGNOSTIC OR THERAPEUTIC USE.

To place your order, please contact us by Phone **1.858.829.3082** Fax **1.858.481.8694**

Or you can Email us at: [info@bpsbioscience.com](mailto:info@bpsbioscience.com)

Please visit our website at: [www.bpsbioscience.com](http://www.bpsbioscience.com)