



# SZABO SCANDIC

Part of Europa Biosite

## Produktinformation



Forschungsprodukte & Biochemikalien



Zellkultur & Verbrauchsmaterial



Diagnostik & molekulare Diagnostik



Laborgeräte & Service

Weitere Information auf den folgenden Seiten!  
See the following pages for more information!



### Lieferung & Zahlungsart

siehe unsere [Liefer- und Versandbedingungen](#)

### Zuschläge

- Mindermengenzuschlag
- Trockeneiszuschlag
- Gefahrgutzuschlag
- Expressversand

### SZABO-SCANDIC HandelsgmbH

Quellenstraße 110, A-1100 Wien

T. +43(0)1 489 3961-0

F. +43(0)1 489 3961-7

[mail@szabo-scandic.com](mailto:mail@szabo-scandic.com)

[www.szabo-scandic.com](http://www.szabo-scandic.com)

[linkedin.com/company/szaboscandic](https://www.linkedin.com/company/szaboscandic) 

**Description**

This cell line is a clonal derivative from the Cas9-Expressing MDA-MB-231 Cell Pool (BPS Bioscience, #78069). It was generated by limiting dilution of the original pool and isolation of individual clones, which were screened based on Cas9 expression to obtain a high-expressing cell line. The expressed Cas9 protein includes a C-terminal FLAG tag.

**Background**

Cas9 (*Streptococcus pyogenes* CRISPR associated protein 9) is an endonuclease enzyme that, when recruited to a specific DNA sequence by the sgRNA (single guide RNA), introduces a double stranded break into the DNA. This double stranded break is repaired in mammalian cells either through Non-Homologous End Joining or Homologous Recombination. Non-Homologous End Joining often results in the deletion or insertion of several base pairs at the cut site, which, when resulting in a frameshift, causes the functional inactivation of the targeted gene. Cas9-expressing MDA-MB-231 cells can be transduced or electroporated with sgRNA targeting a gene of interest to quickly generate knock-out cell pools or cell lines.

**Application**

1. Quickly generating knock-out cell pools or cell lines in MDA-MB-231 cells.
2. Implementing sgRNA screens in Cas9-expressing MDA-MB-231 cells.

**Materials Provided**

Components	Format
2 vials of frozen cells	Each vial contains $2 \times 10^6$ cells in 1 ml of 10% DMSO

**Host Cell**

MDA-MB-231 human mammary gland cell line. Adherent epithelial cells.

**Mycoplasma Testing**

This cell line has been screened using the MycoAlert™ Mycoplasma Detection Kit (Lonza, #LT07-118) to confirm the absence of Mycoplasma contamination. MycoAlert Assay Control Set (Lonza, #LT07-518) was used as a positive control.

**Materials Required but Not Supplied**

These materials are not supplied with this cell line but are necessary for cell culture and cellular assays. BPS Bioscience reagents systems are validated and optimized for use with this cell line and are highly recommended for best results. Media components are provided in the Media Formulations section.

**Materials Required for Cell Line Culture**

Name	Ordering Information
Thaw Medium 12	<a href="#">BPS Bioscience #78074</a>
Growth Medium 12A	<a href="#">BPS Bioscience #78075</a>

**Storage Conditions**

Cells will arrive upon dry ice and should immediately be thawed or stored in liquid nitrogen upon receipt. Do not use a -80°C freezer for long term storage. Contact technical support at [support@bpsbioscience.com](mailto:support@bpsbioscience.com) if the cells are not frozen in dry ice upon arrival.

**License Disclosure**

Visit [bpsbioscience.com/license](https://bpsbioscience.com/license) for the label license and other key information about this product.

**Troubleshooting Guide**

For all questions, please email [support@bpsbioscience.com](mailto:support@bpsbioscience.com).

**Media Formulations**

For best results, it is *highly recommended* to use these validated and optimized media from BPS Bioscience. To formulate a comparable but not BPS validated media, formulation components can be found below.



Note: Thaw Media does *not* contain selective antibiotics. However, Growth Media *does* contain selective antibiotics, which are used for maintaining cell lines over many passages. Cells should be grown at 37°C with 5% CO<sub>2</sub> using Growth Medium 12A.

*Media Required for Cell Line Culture*

Thaw Medium 12 (BPS Bioscience, #78074):

DMEM medium (Hyclone, #SH30243.01) supplemented with 10% FBS (Life technologies, #26140-079), 1% Penicillin/Streptomycin (Hyclone, #SV30010.01), and 1X MEM Non-essential Amino Acids (Gibco, #11140050).

Growth Medium 12A (BPS Bioscience, #78075):

Thaw Medium 12 (BPS Bioscience, #78074) plus 0.25 µg/ml Puromycin (Invivogen, #ant-pr-1) to ensure recombinant expression.

Cells should be grown at 37°C with 5% CO<sub>2</sub> using Growth Medium 12A to ensure recombinant expression is maintained.

**Recommended Culture Conditions***Frozen Cells:*

1. Prepare T-75 culture flask with 20 ml of pre-warmed Thaw Medium 12 (**no Puromycin**).
2. Quickly thaw cells in a 37°C water bath with constant and slow agitation.
3. After cleaning the outside of the vial with 70% ethanol, immediately transfer the entire content to Thaw Medium 12 (**no Puromycin**). Avoid pipetting up and down, and gently rock the flask to distribute the cells.
4. Incubate the cells in a humidified 37°C incubator with 5% CO<sub>2</sub>.
5. 24-48 hours after incubation, change to fresh Growth Medium 12A (**contains Puromycin**), without disturbing the attached cells.
6. Continue to change medium every 2-3 days until cells reach desired confluency.
7. If slow cell growth occurs during resuscitation, increase FBS to 15% for the first week of culture.

*Subculture:*

1. When cells reached 90% confluency, remove Growth Medium 12A and wash twice with PBS (without Magnesium or Calcium).
2. Treat cells with 2-3 ml of 0.25% Trypsin/EDTA and incubate for 2-3 minutes at 37°C.
3. After confirming cell detachment by light microscopy, add 10 mL pre-warmed Growth Medium 12A and gently pipette up and down to dissociate cell clumps.
4. Transfer cells to a 15 ml conical tube and centrifuge at 200 x g for 5 minutes.
5. Remove the medium and resuspend cells in 10 ml pre-warmed Growth Medium 12A.
6. Dispense 2 mL of the cell suspension into a new T75 flask containing pre-warmed 18 ml Growth Medium 12A (a subcultivation ratio of 1:2 to 1:10 is recommended).
7. Incubate cells in a humidified 37°C incubator with 5% CO<sub>2</sub>.

*Cryopreservation:*

1. When cells have reached 90% confluency, use trypsin to remove cells from plate as above, spin cells and remove medium from the pellet.
2. Resuspend the cells in freezing medium (10% DMSO in FBS).
3. Freeze cells using a reduced rate freezing box (-0.5°C to -1°C per minute) down to -80°C, then move cells to liquid nitrogen for long term storage.



Cells have been demonstrated to be stable for at least 15 passages; BPS recommends preparing frozen stocks so cells are not used beyond passage 20.

**Validation Data**

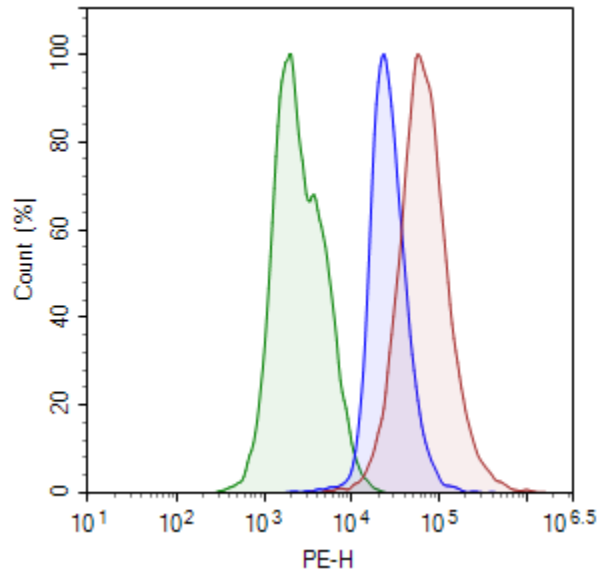


Figure 1. Flow cytometry analysis of intracellular expression of Cas9 in MDA-MB-231 cells. Cells were stained with PE-labeled anti-FLAG antibody (BioLegend, #637309) and analyzed by flow cytometry. The parental MDA-MB-231 cells are shown in green, the Cas9-expressing MDA-MB-231 High expression cell line (BPS Bioscience, #78150-H) is shown in red, and the Cas9-expressing MDA-MB-231 Low expression cell line (BPS Bioscience, #78150-L) is shown in blue.

**Vector and Sequence**

*Streptococcus pyogenes* Cas9, including a C-terminal FLAG tag, was transduced via lentivirus (BPS Bioscience, #78066).

MDKKYSIGLDIGTNSVGWAVITDEYKVPSPKFKVLGNTDRHSIKKNLIGALLFDSGETAEATRLKRTARRRYTRRKNRICYLQEIFSN  
 EMAKVDDSFHRLSEESFLVEEDKKHERHPIFGNIVDEVAYHEKYPTIYHLRKKLVDSTDKADLRILIYALAHMIKFRGHFLIEGDLNP  
 DNSDVKLFIQLVQTYNQLFEENPINASGVDAKILSARLSKSRLENLIAQLPGEKKNLFGNLIASLGLTPNFKSNFDLAEDAKL  
 QLSKDYDDDLNLLAQIGDQYADLFLAAKNLSDAILLSDILRVNTEITKAPLSASMIKRYDEHHQDLTLLKALVRQQLPKEYKEIFF  
 DQSKNGYAGYIDGGASQEEFYKFIKPILEKMDGTEELLVKNLREDLLRKQRTFDNGSIPHQIHLGELHAILRRQEDFYFPLKDNREKI  
 EKILTRIPYYVGPLARGNSRFAWMTRKSEETITPWNFEVVDKGASAQSFIERMTNFDKNLPNEKVLPKHSLLYEYFTVYNELTKV  
 KYVTEGMRKPAFLSGEQKKAIVDLLFKTNRKVTVKQLKEDYFKKIECFDSVEISGVEDRFNASLGTYHDLKIIKDKDFLDNEENEDIL  
 EDIVLTLTLFEDREMIEERLKYAHLFDDKVMKQLKRRRYTGWGRLSRKLINGIRDKQSGKTILDFLKSDGFANRNFMLIHDDSLT  
 FKEDIQKAQVSGQGDSLHEHIANLAGSPAIKKILQTVKVVDELVKVMGRHKPENIVIEMARENQTTQKGQKNSRERMKRIEEGI  
 KELGSQILKEHPVENTQLQNEKLYLYLQNGRDMYVDQELINRLSDYDVDHIVPQSFLKDDSIDNKVLRSDKNRKGSDNVPSEE  
 VVKMKNYWRQLLNAKLITQRKFDNLTKAERGGSELKAGFIKRLVETRQITKHVAQILDSRMNTKYDENDKLIREVKVITLKS  
 KLVSDFRKDFQFYKREINNYHHAHDAYLNAVVGTAIIKKYKPLESEFVYGDYKVVYDVRKMIKAKSEQEIGKATAKYFFYSNIMNFFK  
 TEITLANGEIRKPLIETNGETGEIVWDKGRDFATVRKVLSPQVNIKKTEVQTGGFSKESILPKRNSDKLIARKKDWDPKYYGGF  
 DSPTVAYSVLVVAKEKGSKLLKSVKELLGITIMERSSEFNPIDFLEAKGYKEVKKDLIILPKYSLFELENGRKRMLASAGELQKG  
 NELALPSKYVNFYLAHYEKLKSPEDNEQKQLFVEQHKHYLDEIIEQISEFSKRVLADANLDKVL SAYNKHRDKPIREQAENIIHL  
 FTLTNLGAPAAFYFDTTIDRKRYTSTKEVLDTLIHQISITGLYETRIDLSQLGGDKRPAATKKAGQAKKKKDYKDDDD

**Related Products**

<i>Products</i>	<i>Catalog #</i>	<i>Size</i>
Cas9-Expressing MDA-MB-231 Cell Pool	78069	2 vials
Cas9 Lentivirus (puromycin selection)	78066	500 µl x 2
Cas9, His-tag ( <i>S. pyogenes</i> )	100206-1	50 µg
Thaw Medium 12	78074	100 ml
Growth Medium 12A	78075	500 ml

**Notes**

*The CRISPR/CAS9 technology is covered under numerous patents, including U.S. Patent Nos. 8,697,359 and 8,771,945, as well as corresponding foreign patents applications, and patent rights.*