



# SZABO SCANDIC

Part of Europa Biosite

## Produktinformation



Forschungsprodukte & Biochemikalien



Zellkultur & Verbrauchsmaterial



Diagnostik & molekulare Diagnostik



Laborgeräte & Service

Weitere Information auf den folgenden Seiten!  
See the following pages for more information!



### Lieferung & Zahlungsart

siehe unsere [Liefer- und Versandbedingungen](#)

### Zuschläge

- Mindermengenzuschlag
- Trockeneiszuschlag
- Gefahrgutzuschlag
- Expressversand

### SZABO-SCANDIC HandelsgmbH

Quellenstraße 110, A-1100 Wien

T. +43(0)1 489 3961-0

F. +43(0)1 489 3961-7

[mail@szabo-scandic.com](mailto:mail@szabo-scandic.com)

[www.szabo-scandic.com](http://www.szabo-scandic.com)

[linkedin.com/company/szaboscandic](https://www.linkedin.com/company/szaboscandic) 

**Description**

This cell line has been engineered for use with the CRISPR Synergistic Activation Mediator (SAM) system to induce transcriptional activation and expression of any gene of interest. Cells stably express a mutated dCas9 (Streptococcus pyogenes CRISPR associated protein 9), lacking any endonuclease activity, fused to transcriptional activator VP64. Stable dCas9-VP64 expression is maintained with Blasticidin resistance. Cells also stably express P65 (Transcription Factor p65, or Nuclear Factor NF-κB p65) and HSF1 (Heat Shock Factor 1) fused with an MS2 tag, which is maintained with Hygromycin resistance. When these cells are transfected with an MS2- tagged sgRNA targeting the promoter region of the gene of interest, dCas9-VP64 and MS2-P65-HSF1 are recruited to the genomic DNA and begin transcription, inducing expression of the desired gene.

**Application**

1. Quickly generating CRISPR-activated cell pools or cell lines in HEK293 cells
2. Implementing sgRNA CRISPRa screens in HEK293 cells

**Materials Provided**

Components	Format
2 vials of frozen cells	Each vial contains $2 \times 10^6$ cells in 1 ml of 10% DMSO

**Mycoplasma Testing**

This cell line has been screened using the MycoAlert™ Mycoplasma Detection Kit (Lonza, #LT07-118) to confirm the absence of Mycoplasma contamination. MycoAlert Assay Control Set (Lonza, #LT07-518) was used as a positive control.

**Materials Required but Not Supplied**

These materials are not supplied with this cell line but are necessary for cell culture and cellular assays. BPS Bioscience reagents systems are validated and optimized for use with this cell line and are highly recommended for best results. Media components are provided in the Media Formulations section.

*Materials Required for Cell Culture*

Name	Ordering Information
Thaw Medium 6	<a href="#">BPS Bioscience #60183</a>
Growth Medium 6D	<a href="#">BPS Bioscience #78222</a>

**Storage Conditions**

Cells will arrive upon dry ice and should immediately be thawed or stored in liquid nitrogen upon receipt. Do not use a  $-80^{\circ}\text{C}$  freezer for long term storage. Contact technical support at [support@bpsbioscience.com](mailto:support@bpsbioscience.com) if the cells are not frozen in dry ice upon arrival.

**License Disclosure**

Visit [bpsbioscience.com/license](https://bpsbioscience.com/license) for the label license and other key information about this product.

**Troubleshooting Guide**

For all questions, please email [support@bpsbioscience.com](mailto:support@bpsbioscience.com).

**Media Formulations**

For best results, it is *highly recommended* to use these validated and optimized media from BPS Bioscience. To formulate a comparable but not BPS validated media, formulation components can be found below.



Note: Thaw Media does *not* contain selective antibiotics. However, Growth Media *does* contain selective antibiotics, which are used for maintaining cell lines over many passages. Cells should be grown at 37°C with 5% CO<sub>2</sub>

**Media Required for Cell Culture**

*Thaw Medium 6 (BPS Bioscience # 60183):*

DMEM medium (Thermo Fisher #11995073) supplemented with 10% FBS (Thermo Fisher, Cat. #26140079), 1% Penicillin/Streptomycin (Thermo Fisher, #15140163).

*Growth Medium 6D (BPS Bioscience # 78222):*

*Thaw Medium 6 (BPS Bioscience # 60183)* plus 200 µg/ml of Hygromycin B (Thermo Fisher, #10687010) and 5ug/ml Blastcidin (Invivogen, #ant-bl-1) to ensure recombinant expression.

**Recommended Culture Conditions**

1. It is recommended to quickly thaw the frozen cells from liquid nitrogen in a 37°C water-bath, and then transfer the entire contents of the vial to a tube containing 10 ml of Thaw Medium 6 (no Hygromycin or Blastcidin).
2. Then spin the cells down, remove the supernatant, and resuspend the cells in 5 ml of pre-warmed Thaw Medium 6 (no Hygromycin or Blastcidin).
3. Transfer the resuspended cells to a T25 flask and incubate at 37°C in a 5% CO<sub>2</sub> incubator.
4. After 24 hours of culture, add an additional 3-4 ml of Thaw Medium 6 (no Hygromycin or Blastcidin).
5. At first passage, switch to Growth Medium 6D XX (contains Hygromycin and Blastcidin)

**Subculture:**

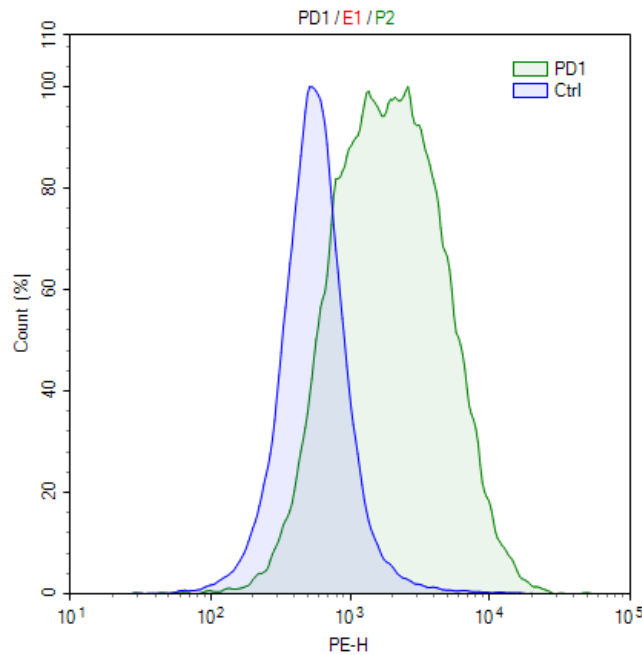
1. When cells have reached 90% confluency, remove the growth medium and wash twice with PBS (without Magnesium or Calcium).
2. Add 2-3 ml of 0.25% Trypsin/EDTA to the cells and incubate for 2-3 minutes at 37°C.
3. After confirming cell detachment by light microscopy, add 10 mL pre-warmed Growth Medium 6D and gently pipette up and down to dissociate cell clumps.
4. Transfer cells to a 15 ml conical tube and centrifuge at 200 x g for 5 minutes.
5. Remove the medium and resuspend cells in 10 ml pre-warmed Growth Medium 6D.
6. Dispense 2 ml of the cell suspension into a new T75 flask containing pre-warmed 18 ml Growth Medium 6D (a subcultivation ratio of 1:2 to 1:10 is recommended).
7. Incubate cells in a humidified 37°C incubator with 5% CO<sub>2</sub>.

**Cryopreservation:**

1. When cells have reached 90% confluency, use trypsin to remove cells from plate as described above, spin cells and remove medium from the pellet.
2. Resuspend the cells in freezing medium (10% DMSO in FBS).
3. Freeze cells using a reduced rate freezing box (-0.5°C to -1°C per minute) down to -80°C, then transfer cells to liquid nitrogen for long term storage.



Cells have been demonstrated to be stable for at least 15 passages; BPS recommends preparing frozen stocks so cells are not used beyond passage 20.

**Validation Data**

*Figure 1. Induction of PD-1 in CRISPRa (SAM) HEK293 cells.*

CRISPRa (SAM) HEK293 cells were transduced with sgRNA-MS2 lentivirus targeting PD-1 (BPS Bioscience, #78190) to induce PD-1 expression. Cells were stained 72 hours post-electroporation (with no selection) with PE-labeled anti-PD-1 antibody (BioLegend, #637309) and analyzed by flow cytometry. Parental CRISPRa (SAM) HEK293 cells are shown in blue, and the transfected CRISPRa (SAM) HEK293 cells are shown in green.

**Vector and Sequence**

dCas9 (nuclease deficient *Streptococcus pyogenes* Cas9, in blue) fused with a linker (black) and VP64 (red):

DKKYSIGLAIGTNSVGVAVITDEYKVPSPKFKVLGNTDRHSIKKNLIGALLFDSGETAEATRLKRTARRRYTRRNRCICYLQEIFSNE  
 MAKVDDSFHRLSEESFLVEEDKKHERHPIFGNIVDEVAYHEKYPTIYHLRKKLVDSTDKADLRLIYLALAHMIKFRGHFLIEGDLNPD  
 NSDVDKLFIQLVQTYNQLFEENPINASGVDAKAILSARLSKSRLENLIAQLPGEKKNGLFGNLIASLGLTPNFKSNFDLAEDAKLQ  
 LSKDQYDDDLNLLAQIGDQYADLFLAAKNLSDAILLSDLRVNTEITKAPLSASMIKRYDEHHQDLTLLKALVRQQLPEKYKEIFFD  
 QSKNGYAGYIDGGASQEEFYKFIKPILEKMDGTEELLVKNREDLLRQRTFDNGSIPHQIHLGELHAILRRQEDFYFPLKDNREKIE  
 KILTRIPYVYVGPLARGNSRFAWMTRKSEETITPWNFEEVVDKGASQSFIERMTNFDKNLPNEKVLPKHSLLEYFTVYNELTKVK  
 YVTEGMRKPAFLSGEQKKAIVDLLFKTNRKVTVKQLKEDYFKKIECFDSVEISGVEDRFNASLGTYHDLKIIKDKDFLDNEENEDILE  
 DIVLTLTLFEDREMIEERLKYAHLFDDKVMKQLKRRRYTGWGRLSRKLINGIRDKQSGKTILDFLKSDFANRNFMLIHDDSLTF  
 KEDIQKAQVSGQDLSHEHIANLAGSPAIKKILQTVKVVDELVKVMGRHKPENIVIAMARENQTTQKGQKNSRERMKRIIEGK  
 ELGSQILKEHPVENTQLQNEKLYLYLQNGRDMYVDQELDINRLSDYDVDHIVPQSFLKDDSIDNKVLRSDKARGKSDNVPSEEV  
 VKMKMNYWRQLLNAKLITQRKFDNLTKAERGGLSELDKAGFIKRQLVETRQITKHVAQILDSRMNTKYDENDKLIREVKVITLKS  
 VSDFRKDFQFYKVINNYHHAHDAYLNAVVGTAIKKYPKLESEFVYGDYKVVYDVRKMIKSEQEI GKATAKYFFYSNIMNFFKTE  
 ITLANGEIRKRPLIETNGETGEIVWDKGRDFATVRKVL SMPQVNI VVKTEVQTGGFSKESILPKRNSDKLIARKKDWDPKYYGGFD  
 SPTVAYSVLVVAKEVGKSKKLKSVKELLGITIMERSSEKPNIDFLEAKGYKEVKKDLIILPKYSLFEENGRKMLASAGELQKGN  
 ELALPSKYVNFYLYLASHYEKLGSPEDNEQKQLFVEQHKHYLDEIIEQISEFSKRVLADANLDKVL SAYNKH RDKPIREQAENIIHFLT  
 LTNLGAPAAFKYFDTTIDRKRYTSTKEVL DATLIHQ SITGLYETRIDLSQLGGDSAGGGGSGGGGSGGGGSGPKKKRKVAAAGSGR  
 ADALDDFDLMLGSDALDDFDLMLGSDALDDFDLMLGSDALDDFDLML

MS2 (in blue) fused with a linker (black), P65 (red), and HSF1 (green):

ASNFTQFVLVDNNGGTGDVTVAPSNFANGVAEWISSNSRSQAYKVTCSVRQSSAQKRKYTIKVEVPKVATQTVGGVELPVAAWR  
 SYLNMELTIPIFATNSDCELVKAMQGLLKDGNPIPSAIAANSYIYAGGGGSGGGGSGGGGSGPKKKRKVAAAGSPSGQISNQA  
 LALAPSSAPVLAQTMVPSSAMVPLAQPAPAPVLTGPPQSLAPVPKSTQAGEGTLSEALLHLQFDAEDL GALLGNSTDPGVF  
 TDLASVDNSEFQQLLNQGVSMHSTAEPLMEYPEAITRLVTSQRPPDPAPTPLGTSGLPNGLSGDEDFSSIADMDFSALLSQI  
 SSSGQGGGSGFSVDT SALLDFSPSVTPDMSLPDL DSSLASIQELLSPQEP RPPEAENSSPDSGKQLVHYTAQPLFLDPGSVD  
 TGSNDLPVLFELGEGSYFSEGDGFAEDPTISLLTGSEPPKAKDPTVS

<i>Products</i>	<i>Catalog #</i>	<i>Size</i>
CRISPRa (SAM) HeLa Cell Line	78193	2 vials
CRISPRa (SAM) HepG2 Cell Line	78194	2 vials
CRISPRa (SAM) Jurkat Cell Line	78080	2 vials
PD-1 sgRNA-MS2 Lentivirus (Integrating)	78190	2 vials
PD-1 sgRNA-MS2 for CRISPRa (Plasmid)	78091	5 µg

**Notes**

The CRISPR/CAS9 technology is covered under numerous patents, including U.S. Patent Nos. 8,697,359 and 8,771,945, as well as corresponding foreign patents applications, and patent rights.

**Reference**

Konermann, S., et al. (2015). Genome-scale transcriptional activation by an engineered CRISPR-Cas9 complex. *Nature*. **517(7536)**: 583-588.