



SZABO SCANDIC

Part of Europa Biosite

Produktinformation



Forschungsprodukte & Biochemikalien



Zellkultur & Verbrauchsmaterial



Diagnostik & molekulare Diagnostik



Laborgeräte & Service

Weitere Information auf den folgenden Seiten!
See the following pages for more information!



Lieferung & Zahlungsart

siehe unsere [Liefer- und Versandbedingungen](#)

Zuschläge

- Mindermengenzuschlag
- Trockeneiszuschlag
- Gefahrgutzuschlag
- Expressversand

SZABO-SCANDIC HandelsgmbH

Quellenstraße 110, A-1100 Wien

T. +43(0)1 489 3961-0

F. +43(0)1 489 3961-7

mail@szabo-scandic.com

www.szabo-scandic.com

[linkedin.com/company/szaboscandic](https://www.linkedin.com/company/szaboscandic) 

Data Sheet

CTLA4 (Mouse), Fc-Fusion (Human), Avi-Tag, Biotin

Mouse, Recombinant, Fc fusion protein,
 C-terminal Avi-Tag
Catalog #: 79001
Lot #: 170620-G **Conc.:** 0.91 mg/ml

Formulated in: 8 mM Phosphate, pH 7.4,
 110 mM NaCl, 2.2 mM KCl, and 20%
 glycerol

Stability: At least 6 months at -80°C . Avoid
 freeze/thaw cycles. Protein may be diluted to
 $\geq 100 \mu\text{g/ml}$ in PBS + glycerol and stored at
 -80°C .

References:

1. Dilek, N., et al., PLoS ONE. 2013;
 8(12): e83139.
2. Leach, D.R., et al., Science. 1996;
 271(5256):1734-1736.

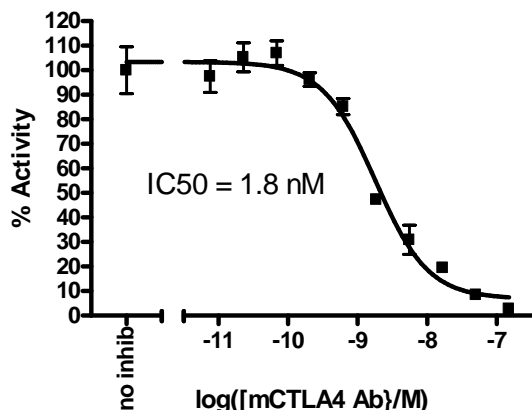
Description: Mouse secreted CTLA4, with
 C-terminal Avi-Tag fused at the C-terminus
 with the Fc portion of human IgG1 and
 biotin labeled, also known as Cytotoxic T-
 lymphocyte-associated protein 4 and
 CD152. GenBank Accession No.
 NM_009843, a.a. 36-161 expressed in a
 HEK293 cell expression system. The
 protein is enzymatically biotinylated using
 AviTag™ technology. MW = 42 kDa. This
 protein runs at a higher MW by SDS-PAGE
 due to glycosylation.

Assay Conditions: Follow assay protocol
 of Mouse CTLA4:B7-1 TR-FRET Assay,
 BPS Cat. #79058.

Applications: Useful for studying protein
 binding and screening small molecules.

Quality Assurance

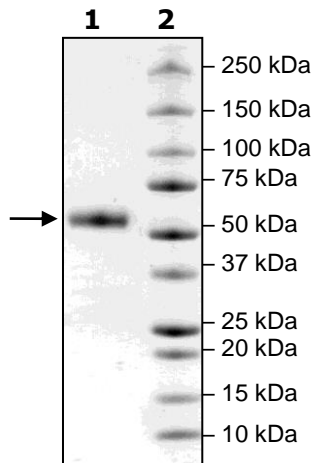
Mouse CTLA4: B7-1 TR-FRET



**Reducing
 4-20% SDS-PAGE
 Coomassie staining**

Lane 1:
 2µg CTLA4
Lane 2:
 Protein Marker

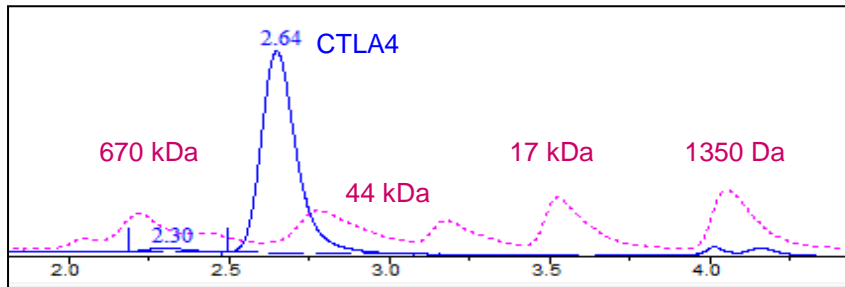
MW: 42 kDa +glycans
Purity: $\geq 90\%$



OUR PRODUCTS ARE FOR RESEARCH USE ONLY. NOT FOR DIAGNOSTIC OR THERAPEUTIC USE.

To place your order, please contact us by Phone **1.858.829.3082** Fax **1.858.481.8694**
 Or you can Email us at: info@bpsbioscience.com
 Please visit our website at: www.bpsbioscience.com

Gel Filtration Trace



<10% Aggregation

Sequence

EAIQVTQPSVVLASSHGVASFPC EYSPSHNTDEV RVTVLRQTNDQMTEVCATTFTEKNTVGF LDY PFCSGTFNESRVNLTIQGLRAVD TGLYLCKVELMYPPPYFVGMGNGTQIYVIDPEPCPDSDI EGRMDPKSCDKTHTCPPCPAPELLGGPSVFLFPPKPKDTLMISRTPEVTCVVDVSHEDPEVKFNWYVDGVEVHNAKTKPREEQYNSTYRVVSVLTVLHQDWLNGKEYKCKVSNKALPAPIEKTI SKAKGQPREPQVYTLPPSRDELTKNQVSLTCLVKGFYPSDIAVEWESNGQPENNYKTTTPVLDSDGSFFLYSKLTVDKSRWQQGNV FSCSVMHEALHNHYTQKLSLSLSPGKGGGLNDI FEAQKIEWHE

Black: mCTLA4 (aa 36-161)

Green: Linker

Red: Fc of human IgG1 (aa 100-330)

Blue: Avi

OUR PRODUCTS ARE FOR RESEARCH USE ONLY. NOT FOR DIAGNOSTIC OR THERAPEUTIC USE.

To place your order, please contact us by Phone **1.858.829.3082** Fax **1.858.481.8694**

Or you can Email us at: info@bpsbioscience.com

Please visit our website at: www.bpsbioscience.com