



# SZABO SCANDIC

Part of Europa Biosite

## Produktinformation



Forschungsprodukte & Biochemikalien



Zellkultur & Verbrauchsmaterial



Diagnostik & molekulare Diagnostik



Laborgeräte & Service

Weitere Information auf den folgenden Seiten!  
See the following pages for more information!



### Lieferung & Zahlungsart

siehe unsere [Liefer- und Versandbedingungen](#)

### Zuschläge

- Mindermengenzuschlag
- Trockeneiszuschlag
- Gefahrgutzuschlag
- Expressversand

### SZABO-SCANDIC HandelsgmbH

Quellenstraße 110, A-1100 Wien

T. +43(0)1 489 3961-0

F. +43(0)1 489 3961-7

[mail@szabo-scandic.com](mailto:mail@szabo-scandic.com)

[www.szabo-scandic.com](http://www.szabo-scandic.com)

[linkedin.com/company/szaboscandic](https://www.linkedin.com/company/szaboscandic) 

## Data Sheet

### SHP-2, His-Tag (Full Length)

Human, Recombinant, N-terminal His-tag  
**Catalog #:** 79018  
**Lot #:** 170328-G2     **Conc.:** 0.41 mg/ml

**Formulated in:** 40mM Tris pH8.0, 110mM NaCl, 2.2mM KCl, 0.04% Tween-20 and 20% glycerol.

**Stability:** At least 6 months at  $-80^{\circ}\text{C}$ . Avoid freeze/thaw cycles. Protein may be diluted to  $\geq 100 \mu\text{g/ml}$  in PBS + glycerol and stored at  $-80^{\circ}\text{C}$ .

**References:**

1. B.G. Neel *et al.* *Trends Biochem. Sci.* (2003) **28**: 284
2. J.V. Ravetch & L.L. Lanier *Science* (2000) **290**: 84

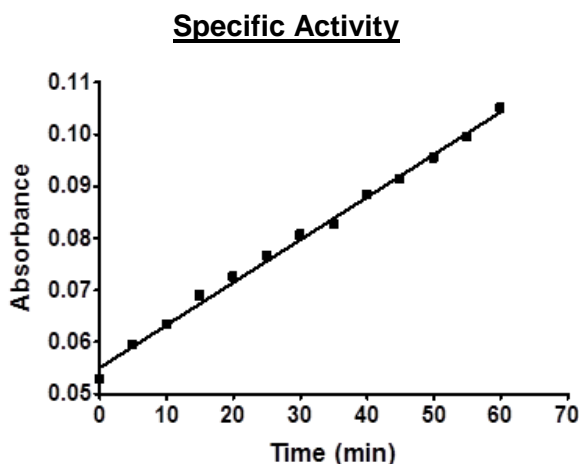
**Description:** Human recombinant SHP-2, also known as PTPN11 (protein tyrosine phosphatase N11), a.a. 2-593 (end), full length, with N-terminal His-tag, Genbank accession number NM\_002834, MW=70 kDa, expressed in an *E. coli* expression system.

**Specific Activity:**  $\geq 50 \text{ pmol/min}/\mu\text{g}$ .

Assay conditions: 50mM HEPES, pH7.4, 100mM NaCl, 2mM EDTA, 3mM DTT, 5mM PNPP substrate, 30 min at  $30^{\circ}\text{C}$ . Absorbance is measured at 405nm.

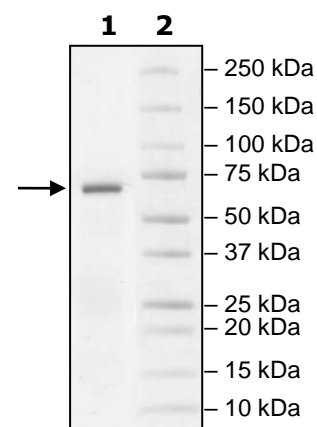
**Application:** Useful for the study of enzyme kinetics, screening inhibitors, and selectivity profiling.

### Quality Assurance



**4-20% SDS-PAGE  
Coomassie staining**

**Lane 1:**  
2 $\mu\text{g}$  SHP2  
**Lane 2:**  
Protein Marker  
**MW:** 70 kDa  
**Purity:**  $\geq 85\%$



OUR PRODUCTS ARE FOR RESEARCH USE ONLY. NOT FOR DIAGNOSTIC OR THERAPEUTIC USE.

To place your order, please contact us by Phone **1.858.829.3082** Fax **1.858.481.8694**  
 Or you can Email us at: [info@bpsbioscience.com](mailto:info@bpsbioscience.com)  
 Please visit our website at: [www.bpsbioscience.com](http://www.bpsbioscience.com)