



SZABO SCANDIC

Part of Europa Biosite

Produktinformation



Forschungsprodukte & Biochemikalien



Zellkultur & Verbrauchsmaterial



Diagnostik & molekulare Diagnostik



Laborgeräte & Service

Weitere Information auf den folgenden Seiten!
See the following pages for more information!



Lieferung & Zahlungsart

siehe unsere [Liefer- und Versandbedingungen](#)

Zuschläge

- Mindermengenzuschlag
- Trockeneiszuschlag
- Gefahrgutzuschlag
- Expressversand

SZABO-SCANDIC HandelsgmbH

Quellenstraße 110, A-1100 Wien

T. +43(0)1 489 3961-0

F. +43(0)1 489 3961-7

mail@szabo-scandic.com

www.szabo-scandic.com

[linkedin.com/company/szaboscandic](https://www.linkedin.com/company/szaboscandic) 

Data Sheet

LAG3 (CD223) (Mouse), Fc fusion (Human) Avi-Tag

Mouse, Recombinant, Human Fc fusion protein,
with C-terminal Avi-tag™

Catalog #: 79050

Lot #: 170523

Conc.: 0.86 mg/ml

Formulated in: 20 mM NaOAc, pH 5.5, 500 mM NaCl, 0.02% Tween 20 and 10% glycerol.

Stability: At least 6 months at -80°C . Avoid freeze/thaw cycles. Protein may be diluted to $\geq 100 \mu\text{g/ml}$ in PBS + glycerol and stored at -80°C .

Description:

Mouse LAG3, Fc fusion protein (Human), also known as Lymphocyte-Activation Gene 3 and CD223, with C-terminal Avi-tag™ fused to the Fc region of Human IgG1. GenBank Accession No. NM_008479, a.a. 23-442 expressed in a HEK293 cell expression system. MW = 74 kDa.

Application:

Useful for studying protein binding and screening small molecules.

References:

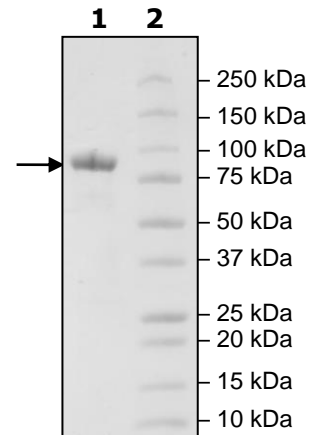
1. Byrnes, *et al.*, *Cytometry A*. 2012 Sep; **81(2)**:165-8.
2. Di Carlo, *et al.*, *J. Pathol.* 2005 Jan; **205(1)**:82-91.

Quality Assurance

**4-20% SDS-PAGE
Coomassie staining**

Lane 1:
3 μg LAG3
Lane 2:
Protein Marker

MW: 74 kDa
Purity: $\geq 90\%$



OUR PRODUCTS ARE FOR RESEARCH USE ONLY. NOT FOR DIAGNOSTIC OR THERAPEUTIC USE.

To place your order, please contact us by Phone **1.858.829.3082** Fax **1.858.481.8694**
Or you can Email us at: info@bpsbioscience.com
Please visit our website at: www.bpsbioscience.com