



SZABO SCANDIC

Part of Europa Biosite

Produktinformation



Forschungsprodukte & Biochemikalien



Zellkultur & Verbrauchsmaterial



Diagnostik & molekulare Diagnostik



Laborgeräte & Service

Weitere Information auf den folgenden Seiten!
See the following pages for more information!



Lieferung & Zahlungsart

siehe unsere [Liefer- und Versandbedingungen](#)

Zuschläge

- Mindermengenzuschlag
- Trockeneiszuschlag
- Gefahrgutzuschlag
- Expressversand

SZABO-SCANDIC HandelsgmbH

Quellenstraße 110, A-1100 Wien

T. +43(0)1 489 3961-0

F. +43(0)1 489 3961-7

mail@szabo-scandic.com

www.szabo-scandic.com

[linkedin.com/company/szaboscandic](https://www.linkedin.com/company/szaboscandic) 

Data Sheet

CD38, His-Tag (Mouse)

Mouse, Recombinant, C-terminal His-Tag
Catalog#: 79070
Lot#: 170711 **Conc.:** 0.91 mg/ml

Formulated in: 8 mM Phosphate, pH 7.4,
 110 mM NaCl, 2.2 mM KCl, and 20%
 glycerol.

Stability: At least 6 months at -80°C . *Avoid freeze/thaw cycles. Protein may be diluted to $\geq 100 \mu\text{g/ml}$ in PBS + glycerol and stored at -80°C .*

References:

1. Damle, R. *et al.*, *Blood*. 1998; **94**: 1840-1847.
2. Howard, M. *et al.*, *Science*. 1993; **262(5136)**: 1056-1059.

Description:

Mouse CD38, also known as cluster of differentiation 38 with C-terminal His-tag, GenBank Accession No. NM_007646, a.a. 45-303 expressed in a HEK293 cell expression system. MW = 31 kDa. This protein runs at a higher MW by SDS-PAGE due to glycosylation.

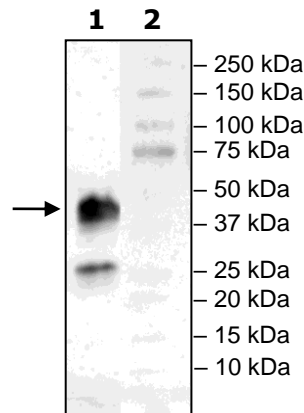
Application:

Useful as a positive control for western blotting

Quality Assurance

Western Blot

Lane 1:
 CD38
Lane 2:
 Protein Marker

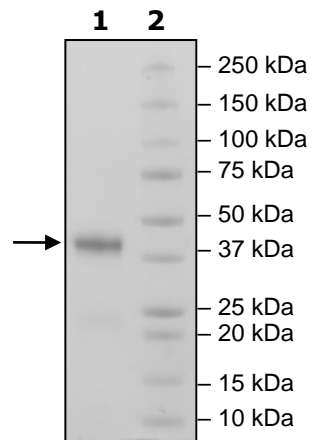


**4-20% SDS-PAGE
 Coomassie staining**

Lane 1:
 4 μg CD38
Lane 2:
 Protein Marker

MW: 31 kDa+glycans

Purity: $\geq 90\%$



OUR PRODUCTS ARE FOR RESEARCH USE ONLY. NOT FOR DIAGNOSTIC OR THERAPEUTIC USE.

To place your order, please contact us by Phone **1.858.829.3082** Fax **1.858.481.8694**
 Or you can Email us at: info@bpsbioscience.com
 Please visit our website at: www.bpsbioscience.com



6042 Cornerstone Court W, Ste B
San Diego, CA 92121
Tel: 1.858.829.3082
Fax: 1.858.481.8694
Email: info@bpsbioscience.com

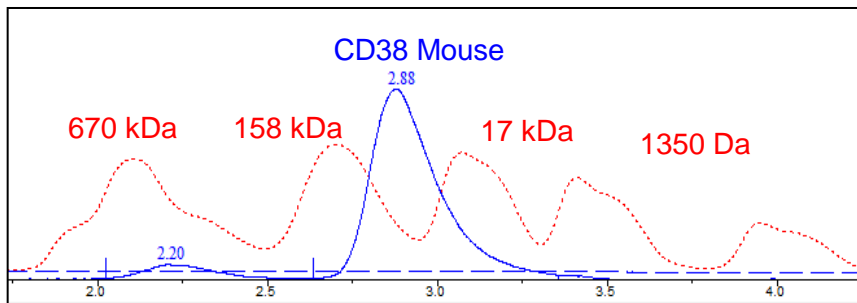
Sequence

LRPRSLLVWTGEPTTKHFSDIFLGRCLIIYTQILRPEMRDQNCQEILSTFKG
AFVSKNPCNITREDYAPLVKLVLTQTIPCNKTLFWSKSKHHLAQYTWIQGKM
FTLEDTLGYYIADDLRWCGDPSTSDMNYVSCPHWSENCNPNPITVFWKVIS
QKFAEDACGVVQVMLNGSLREPFYKNSTFGSVEVFSLDPNKVHKLQAWVMH
DIEGASSNACSSSSLNELKMIVQKRNMIFACVDNYRPARFLQCVKNPEHPS
CRLNT**HHHHHH**

Black: Mouse CD38(45-303)

Red: His-tag

Gel Filtration Curve



<10% Aggregation

OUR PRODUCTS ARE FOR RESEARCH USE ONLY. NOT FOR DIAGNOSTIC OR THERAPEUTIC USE.

To place your order, please contact us by Phone **1.858.829.3082** Fax **1.858.481.8694**

Or you can Email us at: info@bpsbioscience.com

Please visit our website at: www.bpsbioscience.com