



SZABO SCANDIC

Part of Europa Biosite

Produktinformation



Forschungsprodukte & Biochemikalien



Zellkultur & Verbrauchsmaterial



Diagnostik & molekulare Diagnostik



Laborgeräte & Service

Weitere Information auf den folgenden Seiten!
See the following pages for more information!



Lieferung & Zahlungsart

siehe unsere [Liefer- und Versandbedingungen](#)

Zuschläge

- Mindermengenzuschlag
- Trockeneiszuschlag
- Gefahrgutzuschlag
- Expressversand

SZABO-SCANDIC HandelsgmbH

Quellenstraße 110, A-1100 Wien

T. +43(0)1 489 3961-0

F. +43(0)1 489 3961-7

mail@szabo-scandic.com

www.szabo-scandic.com

[linkedin.com/company/szaboscandic](https://www.linkedin.com/company/szaboscandic) 

Data Sheet

Lin28B, FLAG-Avi-Tag, Biotin-Labeled

Human, Recombinant, N-terminal FLAG-Avi-tag,
Biotin Labeled

Catalog #: 79073

Lot#: 170711

Conc.: 0.13 mg/ml

Formulated in: 40 mM Tris-HCl, pH 8.0,
110 mM NaCl, 2.2 mM KCl, 100µg/ml FLAG
peptide, 3mM DTT and 20% glycerol.

Description: Human LIN28B also known as
Lin-28 Homolog B, with N-terminal FLAG-
Avi-Tag and biotin labeled, GenBank
Accession No. NM_001004317, a.a. 2-250
(end), expressed in a HEK293 cell
expression system. MW = 30 kDa.

Stability: At least 6 months at -80°C . Avoid
freeze/thaw cycles. Protein may be diluted to
 $\geq 100 \mu\text{g/ml}$ in PBS + glycerol and stored at
 -80°C .

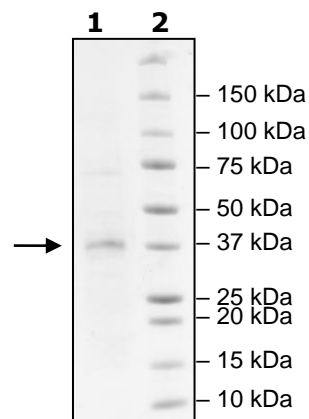
References:

1. Piskounova, E. *et al.*, *Cell*. 2011; **5(23)**:
1066-1079.
2. Tommiska, J. *et al.*, *BMC Research
Notes*. 2011; **4(363)**.

Quality Assurance

4-20% SDS-PAGE Coomassie staining

Lane 1:
1µg Lin28B
Lane 2:
Protein Marker
MW: 30 kDa
Purity: $\geq 50\%$



OUR PRODUCTS ARE FOR RESEARCH USE ONLY. NOT FOR DIAGNOSTIC USE.

To place your order, please contact us by Phone **1.858.829.3082**

Or you can Email us at: info@bpsbioscience.com

Please visit our website at: www.bpsbioscience.com