



# SZABO SCANDIC

Part of Europa Biosite

## Produktinformation



Forschungsprodukte & Biochemikalien



Zellkultur & Verbrauchsmaterial



Diagnostik & molekulare Diagnostik



Laborgeräte & Service

Weitere Information auf den folgenden Seiten!  
See the following pages for more information!



### Lieferung & Zahlungsart

siehe unsere [Liefer- und Versandbedingungen](#)

### Zuschläge

- Mindermengenzuschlag
- Trockeneiszuschlag
- Gefahrgutzuschlag
- Expressversand

### SZABO-SCANDIC HandelsgmbH

Quellenstraße 110, A-1100 Wien

T. +43(0)1 489 3961-0

F. +43(0)1 489 3961-7

[mail@szabo-scandic.com](mailto:mail@szabo-scandic.com)

[www.szabo-scandic.com](http://www.szabo-scandic.com)

[linkedin.com/company/szaboscandic](https://www.linkedin.com/company/szaboscandic) 

## Data Sheet

### Dicer, His-Tag

Human, Recombinant, N-terminal His-Tag

**Catalog #:** 79083

**Lot #:** 190219-1      **Conc.:** 0.69 mg/ml

**Formulated in:** 40 mM Tris-HCl, pH 8.0,  
110 mM NaCl, 2.2 mM KCl, 0.04%  
Tween20, 20% glycerol. 250 mM imidazole.

**Stability:** At least 6 months at  $-80^{\circ}\text{C}$ . Avoid  
freeze/thaw cycles.

#### References:

1. Hutvagner, G., *et al.* *Science*. 2001;  
**293(5531):** 834-838.
2. Bernstein, E., *et al.*, *Nat. Genetics*.  
2003; **35:** 215-217 (2003).

**Description:** Human Dicer, also known as Dicer 1, and Ribonuclease III, GenBank Accession No. NM\_030621, a.a. 2-1922 (end), with a N-terminal His-Tag, expressed in an Sf9 cell expression system. MW =221 kDa.

---

### Quality Assurance

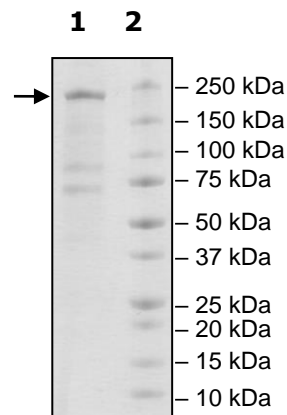
#### 4-20% SDS-PAGE Coomassie staining

**Lane 1:**  
Dicer

**Lane 2:**  
Protein Marker

**Purity:**  $\geq 54\%$

**MW:**  
221 kDa



OUR PRODUCTS ARE FOR RESEARCH USE ONLY. NOT FOR DIAGNOSTIC OR THERAPEUTIC USE.

To place your order, please contact us by Phone **1.858.202.1401** Fax **1.858.481.8694**

Or you can Email us at: [info@bpsbioscience.com](mailto:info@bpsbioscience.com)

Please visit our website at: [www.bpsbioscience.com](http://www.bpsbioscience.com)