



SZABO SCANDIC

Part of Europa Biosite

Produktinformation



Forschungsprodukte & Biochemikalien



Zellkultur & Verbrauchsmaterial



Diagnostik & molekulare Diagnostik



Laborgeräte & Service

Weitere Information auf den folgenden Seiten!
See the following pages for more information!



Lieferung & Zahlungsart

siehe unsere [Liefer- und Versandbedingungen](#)

Zuschläge

- Mindermengenzuschlag
- Trockeneiszuschlag
- Gefahrgutzuschlag
- Expressversand

SZABO-SCANDIC HandelsgmbH

Quellenstraße 110, A-1100 Wien

T. +43(0)1 489 3961-0

F. +43(0)1 489 3961-7

mail@szabo-scandic.com

www.szabo-scandic.com

[linkedin.com/company/szaboscandic](https://www.linkedin.com/company/szaboscandic) 



6042 Cornerstone Court W, Ste B
San Diego, CA 92121
Tel: 1.858.829.3082
Fax: 1.858.481.8694
Email: info@bpsbioscience.com

Data Sheet

LIGHT CHO Recombinant Cell Line

Catalog # 79262

Background

LIGHT (TNFSF14) is a key component of the communication system that controls the responses of T-Cells. LIGHT activates two cell surface receptors, the Herpesvirus Entry Mediator (HVEM) and the Lymphotoxin-beta Receptor (LT β R). The LIGHT-HVEM axis is an important costimulatory pathway for T cells, it has been shown to activate NF- κ B; LIGHT/HVEM pair are co-stimulatory immune checkpoint molecules for cancer immunotherapy, LIGHT expressing cells have been shown to be more potent than the soluble LIGHT for activating HVEM expressed on T cell surface.

Description

Recombinant stable clonal CHO cell line constitutively expressing full length human LIGHT protein, also known as TNFSF14, (Genbank #NM_003807). Surface expression is confirmed by flow cytometry.

Application

This cell line is useful for LIGHT binding assays, flow cytometry, or for screening for LIGHT antibodies. Also useful for immune checkpoint co-stimulatory assay when co-cultured with HVEM/NF- κ B-luciferase/Jurkat reporter cell line (BPS Bioscience).

Host Cell

CHO K1 cell line, Chinese Hamster Ovary

Format

Each vial contains ~ 2 x 10⁶ cells in 1 ml of 10% DMSO in FBS.

Storage

Store in liquid nitrogen immediately upon receipt.

Cell Culture

Thaw Medium 3 (BPS, #60186): Ham's F-12 medium (Hyclone # SH30526.01) supplemented with 10% FBS (Life technologies #26140-079), 1% Penicillin/Streptomycin (Hyclone SV30010.01).

Growth Medium 3D (BPS, #79539): Thaw Medium 3 (BPS Bioscience, #60186) plus 1 mg/ml G418 (Thermo Fisher, #11811031).

OUR PRODUCTS ARE FOR RESEARCH USE ONLY. NOT FOR DIAGNOSTIC OR THERAPEUTIC USE.

To place your order, please contact us by Phone **1.858.829.3082** Fax **1.858.481.8694**

Or you can Email us at: info@bpsbioscience.com

Please visit our website at: www.bpsbioscience.com



6042 Cornerstone Court W, Ste B
San Diego, CA 92121
Tel: 1.858.829.3082
Fax: 1.858.481.8694
Email: info@bpsbioscience.com

Recommended Culture Condition

Frozen Cells: Prepare a 50 ml conical tube with 10 ml of pre-warmed Thaw Medium 3 (**no G418**). Quickly thaw cells in a 37°C water bath with constant and slow agitation. Clean the outside of the vial with 70% ethanol and immediately transfer the entire content to Thaw Medium 3 (**no G418**). Avoid pipetting up and down, and gently rock the conical tube.

Spin the cells down at 150 x g for 5 minutes. Discard the medium and re-suspend the cell pellet in fresh Thaw Medium 3 (**no G418**). Transfer the entire content to a T25 flask to distribute the cells. Incubate the cells in a humidified 37°C incubator with 5% CO₂. After 48-72 hours of incubation, change to fresh Thaw Medium 3 (**no G418**), without disturbing the attached cells. Continue to change the medium every 2-3 days until the cells reach desired confluency. If slow cell growth occurs during resuscitation, increase FBS to 15% for the first week of culture. Switch to Growth Medium 3D (**containing G418**) after the first passage.

Subculture: When cells reach 90% confluency, remove the medium and GENTLY wash once with PBS (without Magnesium or Calcium). These cells are loosely adherent and detach easily so do not re-suspend the PBS directly onto the cell surface. Treat cells with 2 ml of 0.25% trypsin/EDTA and incubate for 2-3 minutes at 37°C. After confirming cell detachment by light microscopy, add 10 ml pre-warmed Growth Medium 3D and gently pipette up and down to dissociate cell clumps. Transfer cells to a 15 ml conical tube and centrifuge at 200 x g for 5 minutes. Remove the medium and re-suspend cells in 10 ml of pre-warmed Growth Medium 3D. Dispense 5 ml of the cell suspension into a new T75 flask containing 20 ml pre-warmed Growth Medium 3D. Incubate cells in a humidified 37°C incubator with 5% CO₂. Freeze cells in freezing medium (10% DMSO in FBS) when cells reach 90% confluency. Cells have been demonstrated to be stable for at least 15 passages; BPS recommends preparing frozen stocks so cells are not used beyond passage 20.

Mycoplasma Testing

This cell line has been screened using the MycoAlert™ Mycoplasma Detection Kit (Lonza, #LT07-118) to confirm the absence of Mycoplasma contamination. MycoAlert Assay Control Set (Lonza, #LT07-518) was used as a positive control.

Application References

1. Chen, *et.al.* (2013) Molecular mechanisms of T cell co-stimulation and co-inhibition. *Nat Rev Immunol.* 2013 April ; **13(4)**: 227–242.
2. Steinberg, *et.al.* (2014) The Signaling Networks of the Herpesvirus Entry Mediator (TNFRSF14) in Immune Regulation. *Immunol Rev.* 2011 November; **244(1)**: 169–187.
3. Rio, *et.al.* (2014) Therapeutic blockade of LIGHT interaction with HVEM and LTβR attenuates in vivo cytotoxic allogeneic responses. *Transplantation.* 2014 December 15; **98(11)**: 1165–1174.

OUR PRODUCTS ARE FOR RESEARCH USE ONLY. NOT FOR DIAGNOSTIC OR THERAPEUTIC USE.

To place your order, please contact us by Phone **1.858.829.3082** Fax **1.858.481.8694**

Or you can Email us at: info@bpsbioscience.com

Please visit our website at: www.bpsbioscience.com

Quality Assurance

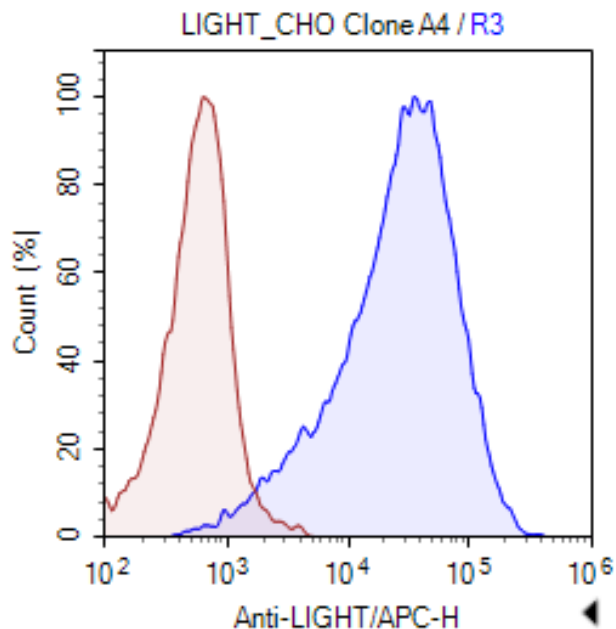


Figure 1. Expression of LIGHT validated by flow cytometry. Flow cytometry showed APC-conjugated anti-human LIGHT antibody (Abcam, #ab155363) detects LIGHT-positive clonal population (clone A4) (blue), using wild-type CHO cells as a negative control (red).

Vector and Sequence

Human LIGHT (NM_003807) was cloned into pIRESneo.

```
MEESVVRPSVFVVDGQTDIPFTRLGRSHRRQSCSVARVGLLLLLLMGAGLAVQGWFLQLH
WRLGEMVTRLPDGPAGSWEQLIQERRSHEVNPAHLTGANSSLTGSGGPLLWETQLGLAFLR
GLSYHDGALVVTKAGYYYIYSKVQLGGVGCPLGLASTITHGLYKRTPRYPEELELLVSQQSPCG
RATSSSRVWWDSSFLGGVVHLEAGEKVVVRVLDERLVRLRDGTRSYFGAFMV
```

License Disclosure: Purchase of this cell line grants you with a 10-year license to use this cell line in your immediate laboratory, for research use only. This license does not permit you to share, distribute, sell, sublicense, or otherwise make the cell line available for use to other laboratories, departments, research institutions, hospitals, universities, or biotech companies. The license does not permit the use of this cell line in humans or for therapeutic or drug use. The license does not permit modification of the cell line in any way. Inappropriate use or distribution of this cell line will result in revocation of the license and result in an immediate cease of sales and distribution of BPS products to your laboratory. BPS does not warrant the

OUR PRODUCTS ARE FOR RESEARCH USE ONLY. NOT FOR DIAGNOSTIC OR THERAPEUTIC USE.

To place your order, please contact us by Phone **1.858.829.3082** Fax **1.858.481.8694**

Or you can Email us at: info@bpsbioscience.com

Please visit our website at: www.bpsbioscience.com



6042 Cornerstone Court W, Ste B
San Diego, CA 92121
Tel: 1.858.829.3082
Fax: 1.858.481.8694
Email: info@bpsbioscience.com

suitability of the cell line for any particular use, and does not accept any liability in connection with the handling or use of the cell line. Modifications of this cell line, transfer to another facility, or commercial use of the cells may require a separate license and additional fees; contact sales@bpsbioscience.com for details. Publications using this cell line should reference BPS Bioscience, Inc., San Diego.

Related Products

	<u>Cat. #</u>	<u>Size</u>
ONE-Step™ Luciferase Assay System	60690-1	10 ml
ONE-Step™ Luciferase Assay System	60690-2	100 ml
LIGHT, His-Tag (Human)	71266	100 µg
LIGHT, His-Tag (Mouse)	79068	100 µg
HVEM, Fc fusion (Human)	71142	100 µg
HVEM, Fc fusion, Biotin-labeled (Human)	71143	50 µg
BTLA(CD272), Fc fusion (Human)	71141	100 µg
BTLA:HVEM[Biotinylated] Inhibitor Screening Assay Kit	72008	96 rxns
Thaw Medium 3	60186	100 ml
HVEM/NF-κB-luciferase/Jurkat reporter cell line	(coming soon)	

OUR PRODUCTS ARE FOR RESEARCH USE ONLY. NOT FOR DIAGNOSTIC OR THERAPEUTIC USE.

To place your order, please contact us by Phone **1.858.829.3082** Fax **1.858.481.8694**

Or you can Email us at: [**info@bpsbioscience.com**](mailto:info@bpsbioscience.com)

Please visit our website at: [**www.bpsbioscience.com**](http://www.bpsbioscience.com)