



SZABO SCANDIC

Part of Europa Biosite

Produktinformation



Forschungsprodukte & Biochemikalien



Zellkultur & Verbrauchsmaterial



Diagnostik & molekulare Diagnostik



Laborgeräte & Service

Weitere Information auf den folgenden Seiten!
See the following pages for more information!



Lieferung & Zahlungsart

siehe unsere [Liefer- und Versandbedingungen](#)

Zuschläge

- Mindermengenzuschlag
- Trockeneiszuschlag
- Gefahrgutzuschlag
- Expressversand

SZABO-SCANDIC HandelsgmbH

Quellenstraße 110, A-1100 Wien

T. +43(0)1 489 3961-0

F. +43(0)1 489 3961-7

mail@szabo-scandic.com

www.szabo-scandic.com

[linkedin.com/company/szaboscandic](https://www.linkedin.com/company/szaboscandic) 



6042 Cornerstone Court West, Suite B
San Diego, CA 92121
Tel: 1.858.829.3082
Fax: 1.858.481.8694
Email: info@bpsbioscience.com

Data Sheet

CK1 γ 1, GST-Tag

Human, Recombinant, with N-terminal
GST-tag
Catalog #: 79348
Lot #: 171023 **Conc.:** 0.1 mg/ml

Description: Recombinant human CK1 γ 1 (21-end) also known as CK1G1, CSNK1G1, and CKI- γ 1. Genbank Accession NM_022048 with an N-terminal GST-tag, expressed in Sf9 cells via a baculovirus expression system. MW = 70-76kDa.

Applications: Useful for the kinase assay kits and western blotting.

Formulated in:

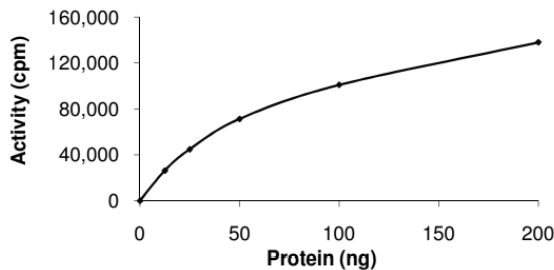
Stability: At least 6 months at -80°C .
Avoid freeze/thaw cycles.

References: (add references)

1. Kusuda, J., *et al.*, *Cytogenet. Cell Genet.* 2000;**90**:298-302.
2. Davidson, G., *et al.*, *Nature.* 2005;**438**:867-872.

Quality Assurance

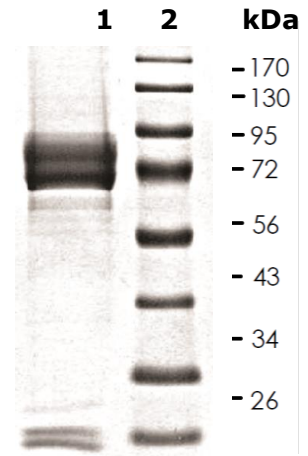
Specific Activity



**10% SDS-PAGE
Coomassie staining**

Lane 1:
CK1 γ 1
Lane 2:
Protein Marker

MW: 70-76 kDa
Purity: $\geq 95\%$



OUR PRODUCTS ARE FOR RESEARCH USE ONLY. NOT FOR DIAGNOSTIC OR THERAPEUTIC USE.

To place your order, please contact us by Phone **1.858.829.3082** Fax **1.858.481.8694**
Or you can Email us at: info@bpsbioscience.com
Please visit our website at: www.bpsbioscience.com