



SZABO SCANDIC

Part of Europa Biosite

Produktinformation



Forschungsprodukte & Biochemikalien



Zellkultur & Verbrauchsmaterial



Diagnostik & molekulare Diagnostik



Laborgeräte & Service

Weitere Information auf den folgenden Seiten!
See the following pages for more information!



Lieferung & Zahlungsart

siehe unsere [Liefer- und Versandbedingungen](#)

Zuschläge

- Mindermengenzuschlag
- Trockeneiszuschlag
- Gefahrgutzuschlag
- Expressversand

SZABO-SCANDIC HandelsgmbH

Quellenstraße 110, A-1100 Wien

T. +43(0)1 489 3961-0

F. +43(0)1 489 3961-7

mail@szabo-scandic.com

www.szabo-scandic.com

[linkedin.com/company/szaboscandic](https://www.linkedin.com/company/szaboscandic) 

Data Sheet

CK1 ϵ , GST -Tag

Human, Recombinant, with N-terminal
GST-tag
Catalog #: 79349
Lot #: 171023 **Conc.:** 0.1 mg/ml

Description: Full length recombinant human CK1 ϵ , also known as CSNK1E, HCKIE, MGC10398, and CK1E. Genbank Accession NM_001894 N-terminal GST-tag, expressed in Sf9 cells via a baculovirus expression system. MW = 72kDa.

Formulated in: 50mM Tris-HCL, pH 7.5, 150mM NaCl, 10mM glutathione, 0.1mM EDTA, 0.25mM DTT, 0.1mM PMSF, 25% glycerol.

Applications: Useful for the kinase assay kits and western blotting.

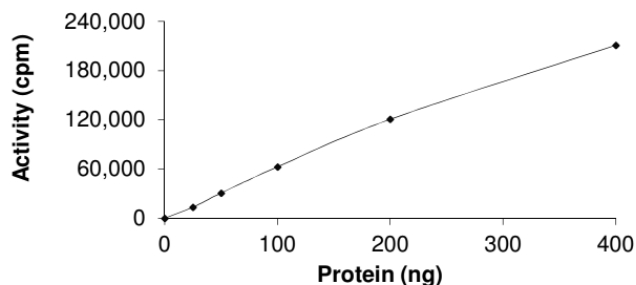
Stability: At least 6 months at -80°C .
Avoid freeze/thaw cycles.

References: (add references)

1. von Blume, J., *et al.*, *EMBO J* 2007;**26(22)**:4619-33.
2. Grozav. A G, *et al.*, *Nucleic Acids Res.* 2009;**37(2)**:382-92.

Quality Assurance

Specific Activity

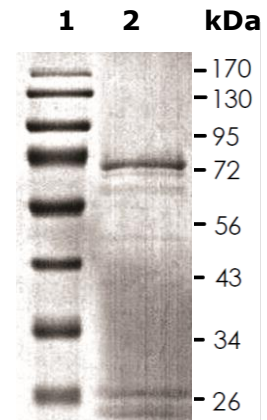


10% SDS-PAGE Coomassie staining

Lane 1:
Protein Marker

Lane 2:
CK1 ϵ

MW: 72 kDa
Purity: $\geq 70\%$



OUR PRODUCTS ARE FOR RESEARCH USE ONLY. NOT FOR DIAGNOSTIC OR THERAPEUTIC USE.

To place your order, please contact us by Phone **1.858.829.3082** Fax **1.858.481.8694**
Or you can Email us at: info@bpsbioscience.com
Please visit our website at: www.bpsbioscience.com