



SZABO SCANDIC

Part of Europa Biosite

Produktinformation



Forschungsprodukte & Biochemikalien



Zellkultur & Verbrauchsmaterial



Diagnostik & molekulare Diagnostik



Laborgeräte & Service

Weitere Information auf den folgenden Seiten!
See the following pages for more information!



Lieferung & Zahlungsart

siehe unsere [Liefer- und Versandbedingungen](#)

Zuschläge

- Mindermengenzuschlag
- Trockeneiszuschlag
- Gefahrgutzuschlag
- Expressversand

SZABO-SCANDIC HandelsgmbH

Quellenstraße 110, A-1100 Wien

T. +43(0)1 489 3961-0

F. +43(0)1 489 3961-7

mail@szabo-scandic.com

www.szabo-scandic.com

[linkedin.com/company/szaboscandic](https://www.linkedin.com/company/szaboscandic) 

Data Sheet

CD28H, His-Tag

Human, Recombinant, C-terminal His-Tag

Catalog #: 79375

Lot#: 171121-2

Conc.: 1.79 mg/ml

Formulated in: 8mM phosphate, pH7.4, 110mM NaCl, 2.2mM KCl, and 20% glycerol.

Stability: At least 6 months at -80°C . Avoid freeze/thaw cycles. Protein may be diluted to $\geq 100 \mu\text{g/ml}$ in PBS + glycerol and stored at -80°C .

Description:

Human CD28 homolog (CD28H), also known as Transmembrane and immunoglobulin domain-containing protein 2 (TMIGD2) and immunoglobulin and proline-rich receptor 1 (IGPR-1). GenBank Accession No. NM_144615, a.a. 23-150 with C-terminal His-Tag expressed in a HEK293 expression system. MW = 15 kDa.

References:

1. Zhu, Y., et al., Nat. Commun. 2013; 4:2043.
2. Zhu, Y., et al., J. Immunol. 2015; 194:142.2.

Quality Assurance

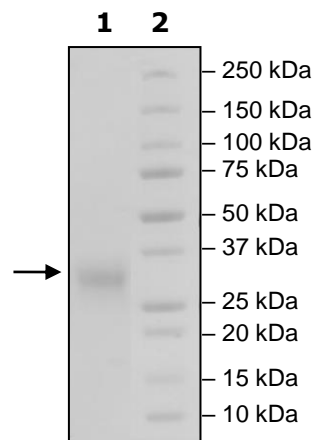
4-20% SDS-PAGE **Coomassie staining**

Lane 1:
4 μg CD28H

Lane 2:
Protein Marker

MW: 15 kDa

Purity: $\geq 90\%$



OUR PRODUCTS ARE FOR RESEARCH USE ONLY. NOT FOR DIAGNOSTIC OR THERAPEUTIC USE.

To place your order, please contact us by Phone **1.858.829.3082** Fax **1.858.481.8694**

Or you can Email us at: info@bpsbioscience.com

Please visit our website at: www.bpsbioscience.com



6042 Cornerstone Court W, Ste B
San Diego, CA 92121
Tel: 1.858.829.3082
Fax: 1.858.481.8694
Email: info@bpsbioscience.com

Sequence:

**NKILVKQSPMLVAYDNAVNLSCKYSYNLFSREFRASLHKGLDSAVEVCVYGNYSQQ
LQVYSKTGFNCDGKLGNESVTFYLNLYVNQTDIYFCKIEVMYPPPYLDNEKSNGTIIH
VKGKHLCPSPFLFPGPSKPDMDPKSCDKTHTCPPCPAPPELLGGPSVFLFPPKPKDTLMI
SRTPEVTCVVVDVSHEDPEVKFNWYVDGVEVHNAKTKPREEQYNSTYRVVSVLTVLH
QDWLNGKEYKCKVSNKALPAPIEKTISKAKGQPREPQVYTLPPSRDELTKNQVSLTCLV
KGFYPSDIAVEWESNGQPENNYKTPPVLDSDGSFFLYSKLTVDKSRWQQGNVFS
VMHEALHNHYTQKSLSLSPGK**

Black: CD28 (a.a. 19-152)

Green: linker

Red: Fc of human IgG1 (a.a.100-330)

OUR PRODUCTS ARE FOR RESEARCH USE ONLY. NOT FOR DIAGNOSTIC OR THERAPEUTIC USE.

To place your order, please contact us by Phone **1.858.829.3082** Fax **1.858.481.8694**
Or you can Email us at: info@bpsbioscience.com
Please visit our website at: www.bpsbioscience.com