



# SZABO SCANDIC

Part of Europa Biosite

## Produktinformation



Forschungsprodukte & Biochemikalien



Zellkultur & Verbrauchsmaterial



Diagnostik & molekulare Diagnostik



Laborgeräte & Service

Weitere Information auf den folgenden Seiten!  
See the following pages for more information!



### Lieferung & Zahlungsart

siehe unsere [Liefer- und Versandbedingungen](#)

### Zuschläge

- Mindermengenzuschlag
- Trockeneiszuschlag
- Gefahrgutzuschlag
- Expressversand

### SZABO-SCANDIC HandelsgmbH

Quellenstraße 110, A-1100 Wien

T. +43(0)1 489 3961-0

F. +43(0)1 489 3961-7

[mail@szabo-scandic.com](mailto:mail@szabo-scandic.com)

[www.szabo-scandic.com](http://www.szabo-scandic.com)

[linkedin.com/company/szaboscandic](https://www.linkedin.com/company/szaboscandic) 

## Data Sheet

### Anti- $\beta$ -Tubulin

Mouse Monoclonal Antibody  
Anti- $\beta$ -Tubulin (BT7R)

**Catalog #:** 79468      **Lot #:** 180307

#### Specificity:

Recognizes native and denatured forms of  $\beta$ -Tubulin (~50kDa).

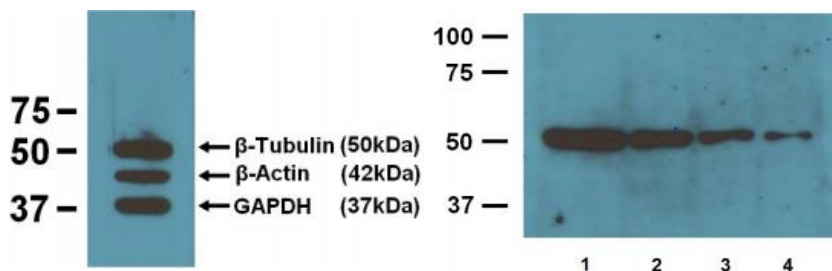
#### Immunogen:

$\beta$ -Tubulin N-terminal peptide-KLH conjugates.

#### Applications:

Dot Blot, ELISA, IS, WB

#### Images:



**Left:** EBI's three loading control mAbs reacting against 10 $\mu$ g/lane of mouse brain tissue lysates. 50kDa band is Anti- $\beta$ -Tubulin (BT7R) at 1:2000 dilution (0.5 $\mu$ g/mL); 42kDa band is Anti- $\beta$ -Actin (BA3R) at 1:1000 dilution (1 $\mu$ g/mL); 37kDa band is Anti-GAPDH (GA1R) at 1:5000 dilution (0.2 $\mu$ g/mL). **Right:** 1:4000 (0.25 $\mu$ g/mL) Ab dilution used in WB of 10 $\mu$ g/lane (1), 5 $\mu$ g/lane (2), 2.5 $\mu$ g/lane (3), 1.25 $\mu$ g/lane (4) mouse brain tissue lysates.

#### Clonality | Host Species | Isotype:

BT7R | Mouse | IgG2b

#### Formulation:

1 mg/mL in 10mM PBS, pH 7.2, with 0.05% NaN<sub>3</sub>

#### Working Conditions:

WB (with ECL): 1:2000-5,000 dilution (incubate for one hour at room temperature). For best results with other assays (e.g.: Dot, ELISA, IS, etc), please determine optimal working dilution by titration test.

#### Purification:

Protein A affinity chromatography from mouse ascites fluid.

#### Storage and Stability:

Store at -20°C for up to 2 years. Centrifuge after first thaw to maximize product recovery. Aliquot to avoid repeated freeze-thaw cycles. Store aliquots at 4°C for 1-2 weeks.

OUR PRODUCTS ARE FOR IN VITRO RESEARCH USE ONLY. NOT FOR DIAGNOSTIC OR THERAPEUTIC USE.

To place your order, please contact us by Phone **1.858.829.3082** Fax **1.858.481.8694**

Or you can Email us at: [info@bpsbioscience.com](mailto:info@bpsbioscience.com)

Please visit our website at: [www.bpsbioscience.com](http://www.bpsbioscience.com)