



SZABO SCANDIC

Part of Europa Biosite

Produktinformation



Forschungsprodukte & Biochemikalien



Zellkultur & Verbrauchsmaterial



Diagnostik & molekulare Diagnostik



Laborgeräte & Service

Weitere Information auf den folgenden Seiten!
See the following pages for more information!



Lieferung & Zahlungsart

siehe unsere [Liefer- und Versandbedingungen](#)

Zuschläge

- Mindermengenzuschlag
- Trockeneiszuschlag
- Gefahrgutzuschlag
- Expressversand

SZABO-SCANDIC HandelsgmbH

Quellenstraße 110, A-1100 Wien

T. +43(0)1 489 3961-0

F. +43(0)1 489 3961-7

mail@szabo-scandic.com

www.szabo-scandic.com

[linkedin.com/company/szaboscandic](https://www.linkedin.com/company/szaboscandic) 

Data Sheet

KYNU, His-Tag

Human, Recombinant, C-terminal His-Tag

Catalog #: 79485

Lot #: 180406

Conc.: 1.341 mg/ml

Formulated in: 40 mM Tris-HCl, pH 8.0, 110 mM NaCl, 2.2 mM KCl, 0.04% Tween20, 20% glycerol, 225mM imidazole, 2uM PLP, 2µM DTT

Stability: At least 6 months at -80°C . Avoid freeze/thaw cycles. Protein may be diluted to $\geq 100 \mu\text{g/ml}$ in PBS + glycerol and stored at -80°C .

References:

1. Christensen, M., *et al.*, *JIMD*. 2007 Mar: 248-255.
2. Zhang, Y., *et al.*, *Circ Genom Precis Med*. 2018; **11(3)**.

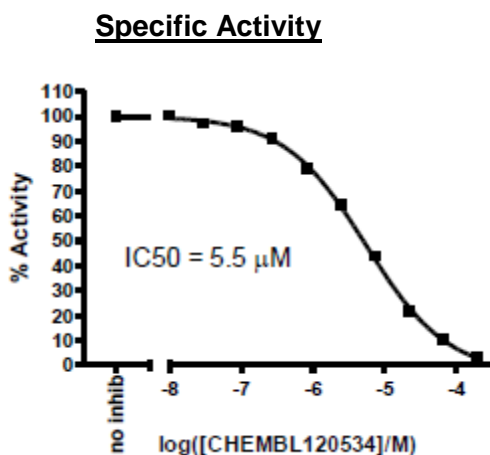
Description: Human secreted KYNU, also known as Kynureninase and L-Kynurenine hydrolase, with C-terminal His-Tag. GenBank Accession No. NM_003937, a.a. 1-465 (end), expressed in Sf9 cells in a Baculovirus expression system. MW = 53 kDa.

Specific Activity: $\geq 75 \text{ pmol/min}/\mu\text{g}$

Assay Conditions: Followed protocol of the Kynureninase Inhibitor Screening Assay Kit (BPS #79514).

Applications: Useful for the study of enzyme kinetics, screening inhibitors, and selectivity profiling.

Quality Assurance



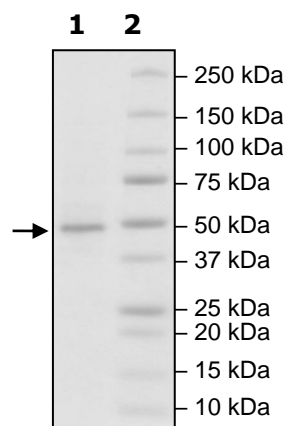
**4-20% SDS-PAGE
Coomassie staining**

Lane 1:
KYNU

Lane 2:
Protein Marker

Purity: $\geq 85\%$

MW: 53 kDa



OUR PRODUCTS ARE FOR RESEARCH USE ONLY. NOT FOR DIAGNOSTIC OR THERAPEUTIC USE.

To place your order, please contact us by Phone **1.858.829.3082** Fax **1.858.481.8694**

Or you can Email us at: info@bpsbioscience.com

Please visit our website at: www.bpsbioscience.com



6042 Cornerstone Court W, Ste B
San Diego, CA 92121
Tel: 1.858.829.3082
Fax: 1.858.481.8694
Email: info@bpsbioscience.com

Sequence

**KAMHVAQPAVVLASSRGIASFVCEYASPGKATEVRVTVLRQADSQVTEVCAATYMM
GNELTFLDDSICTGTSSGNQVNLTIQGLRAMDTGLYICKVELMYPPYYLGIGNGTQIY
VIDPEPCPDSDFIEGRMDPKSCDKTHTCPPCPAPELLGGPSVFLFPPKPKDTLMISRTPEVTCVVVDVSHEDPEVKFNWYVDGVEVHNAKTKPREEQYNSTYRVVSVLTVLHQDWLNGKEYKCKVSNKALPAPIEKTISKAKGQPREPQVYTLPPSRDELTKNQVSLTCLVKGFYPSDIAVEWESNGQPENNYKTTTPVLDSDGSFFLYSKLTVDKSRWQQGNVFSFSVMHEALHNHYTQKSLSLSPGK**

Black: CTLA4 (a.a. 36-162)

Green: linker

Red: Fc of human IgG1 (a.a. 100-330)

OUR PRODUCTS ARE FOR RESEARCH USE ONLY. NOT FOR DIAGNOSTIC OR THERAPEUTIC USE.

To place your order, please contact us by Phone **1.858.829.3082** Fax **1.858.481.8694**
Or you can Email us at: [**info@bpsbioscience.com**](mailto:info@bpsbioscience.com)
Please visit our website at: [**www.bpsbioscience.com**](http://www.bpsbioscience.com)