



# SZABO SCANDIC

Part of Europa Biosite

## Produktinformation



Forschungsprodukte & Biochemikalien



Zellkultur & Verbrauchsmaterial



Diagnostik & molekulare Diagnostik



Laborgeräte & Service

Weitere Information auf den folgenden Seiten!  
See the following pages for more information!



### Lieferung & Zahlungsart

siehe unsere [Liefer- und Versandbedingungen](#)

### Zuschläge

- Mindermengenzuschlag
- Trockeneiszuschlag
- Gefahrgutzuschlag
- Expressversand

### SZABO-SCANDIC HandelsgmbH

Quellenstraße 110, A-1100 Wien

T. +43(0)1 489 3961-0

F. +43(0)1 489 3961-7

[mail@szabo-scandic.com](mailto:mail@szabo-scandic.com)

[www.szabo-scandic.com](http://www.szabo-scandic.com)

[linkedin.com/company/szaboscandic](https://www.linkedin.com/company/szaboscandic) 



6042 Cornerstone Court W, Ste B  
San Diego, CA 92121  
**Tel:** 1.858.829.3082  
**Fax:** 1.858.481.8694  
**Email:** info@bpsbioscience.com

## Data Sheet

### **ICOSL-CHO Recombinant Cell Line Cat. #: 79635**

#### **Product Description**

Recombinant CHO-K1 cells constitutively expressing human ICOSL (also known as human secreted B7 homolog 2 (B7-H2), CD275, ICOSLG, and B7-related protein (B7RP), GenBank Accession No. NM\_001283050).

#### **Background**

ICOSL is the Ligand for the T-cell-specific cell surface receptor ICOS. When engaged by the ICOSL, the ICOS initiates a costimulatory signal for T-cell proliferation and cytokine production. It also induces B-cell proliferation and differentiation into plasma cells. The ICOS/ICOSL is a major regulator of the adaptive immune responses and also plays an important role in mediating local tissue responses to inflammatory conditions.

#### **Applications**

This cell line is useful for screening for ICOSL antibodies through flow cytometry, immunocytochemistry or Western blot.

#### **Format**

Each vial contains ~2 x 10<sup>6</sup> cells in 1 ml of 10% DMSO

#### **Storage**

Store in liquid nitrogen immediately upon receipt.

#### **Mycoplasma Testing**

This cell line has been screened using the MycoAlert™ Mycoplasma Detection Kit (Lonza, #LT07-118) to confirm the absence of Mycoplasma contamination.

**Thaw Medium 3 (BPS Bioscience #60186):** Ham's F-12 medium (Hyclone #SH30526.01) supplemented with 10% FBS (Life technologies #26140-079), 1% Penicillin/Streptomycin (Hyclone #SV30010.01).

**Growth Medium 3D (BPS Bioscience #79539):** Thaw Medium 3 (BPS Bioscience #60186) plus 1 mg/ml of Geneticin (Life Technologies #11811031) to ensure recombinant expression.

Cells should be grown at 37°C with 5% CO<sub>2</sub> using Growth Medium 3D.

OUR PRODUCTS ARE FOR RESEARCH USE ONLY. NOT FOR DIAGNOSTIC OR THERAPEUTIC USE.

To place your order, please contact us by Phone **1.858.829.3082** Fax **1.858.481.8694**

Or you can Email us at: [info@bpsbioscience.com](mailto:info@bpsbioscience.com)

Please visit our website at: [www.bpsbioscience.com](http://www.bpsbioscience.com)



6042 Cornerstone Court W, Ste B  
San Diego, CA 92121  
Tel: 1.858.829.3082  
Fax: 1.858.481.8694  
Email: [info@bpsbioscience.com](mailto:info@bpsbioscience.com)

### Recommended Culture Condition

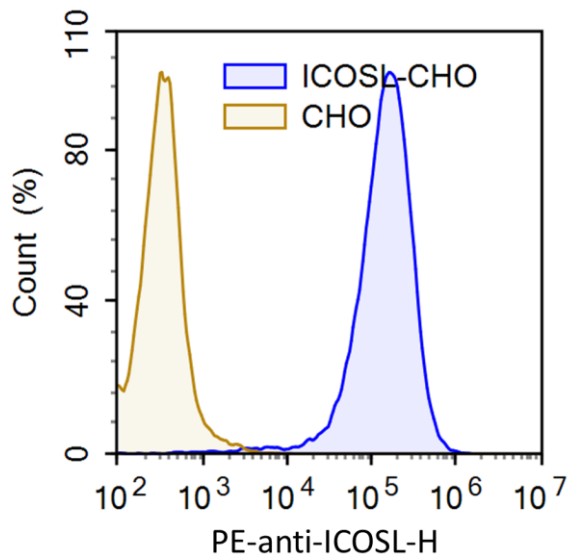
It is recommended to quickly thaw the frozen cells from liquid nitrogen in a 37°C water-bath, transfer to a tube containing 10 ml of Thaw Medium 3 (**no Geneticin**), spin down cells, re-suspend cells in pre-warmed Thaw Medium 3 (**no Geneticin**), transfer re-suspended cells to T25 flask and culture in 37°C CO<sub>2</sub> incubator overnight. The next day, replace the medium with fresh Thaw Medium 3 (**no Geneticin**), and continue growing culture in a CO<sub>2</sub> incubator at 37°C until the cells are ready to be split. Cells should be split before they reach complete confluence. At first passage switch to Growth Medium 3D (**contains 1 mg/ml Geneticin**).

To passage the cells, rinse cells with phosphate buffered saline (PBS), detach cells from culture vessel with 0.05% Trypsin/EDTA, add Growth Medium 3D and transfer to a tube, spin down cells, re-suspend cells and seed appropriate aliquots of cell suspension into new culture vessels.

To freeze down the cells, rinse cells with phosphate buffered saline (PBS), and detach cells from culture vessel with 0.05% Trypsin/EDTA. After detachment, add Thaw Medium 3 (**no Geneticin**) and count the cells, then transfer to a tube, spin down cells, and resuspend in 4°C Freezing Medium (10% DMSO + 90% FBS) at  $\sim 2 \times 10^6$  cells/ml. Dispense 1 ml of cell aliquots into cryogenic vials. Place vials in an insulated container for slow cooling and store at -80°C overnight. Transfer to liquid nitrogen the next day for storage. It is recommended to expand the cells and freeze down more than 10 vials of cells for future use at early passage.

### Functional Validation and Assay Performance

Expression of human ICOSL in CHO-K1 cells was confirmed by FACS.



ICOSL-CHO-K1 cells (blue) and control CHO-K1 cells (yellow) were incubated with PE-labeled anti-ICOSL and detected by flow cytometry.

OUR PRODUCTS ARE FOR RESEARCH USE ONLY. NOT FOR DIAGNOSTIC OR THERAPEUTIC USE.

To place your order, please contact us by Phone **1.858.829.3082** Fax **1.858.481.8694**

Or you can Email us at: [info@bpsbioscience.com](mailto:info@bpsbioscience.com)

Please visit our website at: [www.bpsbioscience.com](http://www.bpsbioscience.com)



6042 Cornerstone Court W, Ste B  
San Diego, CA 92121  
**Tel:** 1.858.829.3082  
**Fax:** 1.858.481.8694  
**Email:** [info@bpsbioscience.com](mailto:info@bpsbioscience.com)

## Sequence

Human ICOSL sequence (accession number NM\_001283050)

MRLGSPGLLFLLFSSLRADTQEKEVRAMVGSDELSCACPEGSRFDLNDVYVYWQTSESKTV  
VTYHIPQNSSLENVDSRYRNRALMSPAGMLRGDFSLRFLFNVTQPDEQKFHCLVLSQSLGFQEV  
LSVEVTLHVAANFSVPVVSAPHSPSQDELFTCTTSINGYPRPNVYWINKTDNSLLDQALQNDTV  
FLNMRGLYDVSVLRIARTPSVNIGCCIENVLLQQNLTVGSQTGNDIGERDKITENPVSTGEKNA  
ATWSILAVLCLLVVVAIGAIGWVCRDRCLQHSYAGAWAVSPETELTGHV

## Related Products

<u>Product</u>	<u>Cat. #</u>	<u>Size</u>
B7-H2, Avi-His-Tag, Biotin-Labeled	79300	50 µg
B7-H2, Avi-His-Tag	79119	100 µg
B7-H2 (CD275, ICOSL), Fc fusion (Human) HiP™	71130	100 µg
ICOS (CD278), Fc fusion (Human)	71179	100 µg
Thaw Medium 3	60186	100 ml
Growth Medium 3D	79539	500 ml

**License Disclosure:** Purchase of this cell line grants you with a 10-year license to use this cell line in your immediate laboratory, for research use only. This license does not permit you to share, distribute, sell, sublicense, or otherwise make the cell line available for use to other laboratories, departments, research institutions, hospitals, universities, or biotech companies. The license does not permit use of this cell line in humans or for therapeutic or drug use. The license does not permit modification of the cell line in any way. Inappropriate use or distribution of this cell line will result in revocation of the license and result in an immediate cease of sales and distribution of BPS products to your laboratory. BPS does not warrant the suitability of the cell line for any particular use, and does not accept any liability in connection with the handling or use of the cell line. Modifications of this cell line, transfer to another facility, or commercial use of the cells may require a separate license and additional fees; contact [sales@bpsbioscience.com](mailto:sales@bpsbioscience.com) for details. Publications using this cell line should reference BPS Bioscience, Inc., San Diego.

OUR PRODUCTS ARE FOR RESEARCH USE ONLY. NOT FOR DIAGNOSTIC OR THERAPEUTIC USE.

To place your order, please contact us by Phone **1.858.829.3082** Fax **1.858.481.8694**

Or you can Email us at: [info@bpsbioscience.com](mailto:info@bpsbioscience.com)

Please visit our website at: [www.bpsbioscience.com](http://www.bpsbioscience.com)